

Reg I β (H-40): sc-98475

BACKGROUND

The regeneration (Reg) family consists of secretory proteins involved in liver, pancreatic, gastric and intestinal cell proliferation or differentiation. Members of the REG family are divided into four subclasses, designated types I, II, III and IV. They have been implicated in the regulation of cell growth, tumorigenesis and the progression of cancer. Reg I β (regenerating islet-derived 1 β), also known as REGH, REGL or PPS2, is a 166 amino acid pancreatic protein that contains one C-type lectin domain and belongs to subclass I of the Reg family. The gene encoding Reg I β is tandemly clustered with other Reg proteins on a region of human chromosome 2, suggesting that several Reg proteins may have arisen from a gene duplication event.

REFERENCES

- Gharib, B., Fox, M.F., Bartoli, C., Giorgi, D., Sansonetti, A., Swallow, D.M., Dagorn, J.C. and Berge-lefranc, J.L. 1993. Human regeneration protein/lithostathine genes map to chromosome 2p12. *Ann. Hum. Genet.* 57: 9-16.
- Bartoli, C., Gharib, B., Giorgi, D., Sansonetti, A., Dagorn, J.C. and Berge-lefranc, J.L. 1993. A gene homologous to the Reg gene is expressed in the human pancreas. *FEBS Lett.* 327: 289-293.
- Moriizumi, S., Watanabe, T., Unno, M., Nakagawara, K., Suzuki, Y., Miyashita, H., Yonekura, H. and Okamoto, H. 1994. Isolation, structural determination and expression of a novel Reg gene, human Reg I β . *Biochim. Biophys. Acta* 1217: 199-202.
- Miyashita, H., Nakagawara, K., Mori, M., Narushima, Y., Noguchi, N., Moriizumi, S., Takasawa, S., Yonekura, H., Takeuchi, T. and Okamoto, H. 1995. Human REG family genes are tandemly ordered in a 95-kilobase region of chromosome 2p12. *FEBS Lett.* 377: 429-433.
- Bartoli, C., Baeza, N., Figarella, C., Pellegrini, I. and Figarella-Branger, D. 1998. Expression of peptide-23/pancreatitis-associated protein and Reg genes in human pituitary and adenomas: comparison with other fetal and adult human tissues. *J. Clin. Endocrinol. Metab.* 83: 4041-4046.
- Sanchez, D., Figarella, C., Marchand-Pinatel, S., Bruneau, N. and Guy-Crotte, O. 2001. Preferential expression of Reg I β gene in human adult pancreas. *Biochem. Biophys. Res. Commun.* 284: 729-737.
- Banchuin, N., Boonyasrisawat, W., Pulsawat, P., Vannasaeng, S., Deerochanawong, C., Sriussadaporn, S., Ploybutr, S., Pasurakul, T. and Yenichitsomanus, P.T. 2002. No abnormalities of Reg1 α and Reg1 β gene associated with diabetes mellitus. *Diabetes Res. Clin. Pract.* 55: 105-111.

CHROMOSOMAL LOCATION

Genetic locus: REG1B (human) mapping to 2p12; Reg1/Reg2 (mouse) mapping to 6 C3.

SOURCE

Reg I β (H-40) is a rabbit polyclonal antibody raised against amino acids 121-160 mapping near the C-terminus of Reg I β of human origin.

RESEARCH USE

For research use only, not for use in diagnostic procedures.

PRODUCT

Each vial contains 200 μ g IgG in 1.0 ml of PBS with < 0.1% sodium azide and 0.1% gelatin.

APPLICATIONS

Reg I β (H-40) is recommended for detection of Reg I β of human origin and, to a lesser extent, Reg I and Reg II of mouse origin by Western Blotting (starting dilution 1:200, dilution range 1:100-1:1000), immunoprecipitation [1-2 μ g per 100-500 μ g of total protein (1 ml of cell lysate)], immunofluorescence (starting dilution 1:50, dilution range 1:50-1:500) and solid phase ELISA (starting dilution 1:30, dilution range 1:30-1:3000); may cross-react with Reg I α of human origin.

Suitable for use as control antibody for Reg I β siRNA (h): sc-95000, Reg I β shRNA Plasmid (h): sc-95000-SH and Reg I β shRNA (h) Lentiviral Particles: sc-95000-V.

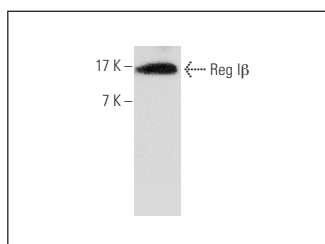
Molecular Weight of Reg I β : 19 kDa.

Positive Controls: mouse pancreas extract: sc-98475.

RECOMMENDED SECONDARY REAGENTS

To ensure optimal results, the following support (secondary) reagents are recommended: 1) Western Blotting: use goat anti-rabbit IgG-HRP: sc-2004 (dilution range: 1:2000-1:100,000) or Cruz Marker™ compatible goat anti-rabbit IgG-HRP: sc-2030 (dilution range: 1:2000-1:5000), Cruz Marker™ Molecular Weight Standards: sc-2035, TBS Blotto A Blocking Reagent: sc-2333 and Western Blotting Luminol Reagent: sc-2048. 2) Immunoprecipitation: use Protein A/G PLUS-Agarose: sc-2003 (0.5 ml agarose/2.0 ml). 3) Immunofluorescence: use goat anti-rabbit IgG-FITC: sc-2012 (dilution range: 1:100-1:400) or goat anti-rabbit IgG-TR: sc-2780 (dilution range: 1:100-1:400) with UltraCruz™ Mounting Medium: sc-24941.

DATA



Reg I β (H-40): sc-98475. Western blot analysis of Reg I β expression in mouse pancreas tissue extract.

STORAGE

Store at 4° C, **DO NOT FREEZE**. Stable for one year from the date of shipment. Non-hazardous. No MSDS required.

PROTOCOLS

See our web site at www.scbt.com or our catalog for detailed protocols and support products.