

Bcl-11b (H-42): sc-98513

BACKGROUND

Bcl-11a (CtIP-1, EVI9, B cell CLL/lymphoma 11A) and Bcl-11b (CtIP-2, RIT1, B cell CLL/lymphoma 11B) genes play crucial roles in lymphopoiesis and influence the progression of hematopoietic malignancies. Disruption of the Bcl-11b (B cell chronic lymphocytic leukemia/lymphoma 11B) locus is linked to T cell acute lymphoblastic leukemia and the loss of heterozygosity in mice results in T cell lymphoma. Bcl-11 proteins are related C₂H₂ zinc-finger transcription factors that act as transcriptional repressors. Bcl-11b can interact with the metastasis-associated proteins MTA1 and MTA2 through the amino-terminal region. Bcl-11a is essential for postnatal development and normal lymphopoiesis. The Bcl-11a mouse gene is a common site of retroviral integration in myeloid leukemia, and may function as a leukemia disease gene, in part, through its interaction with Bcl-6.

CHROMOSOMAL LOCATION

Genetic locus: BCL11B (human) mapping to 14q32.2; Bcl11b (mouse) mapping to 12 F1.

SOURCE

Bcl-11b (H-42) is a rabbit polyclonal antibody raised against amino acids 251-290 mapping within an internal region of Bcl-11b of human origin.

PRODUCT

Each vial contains 200 µg IgG in 1.0 ml of PBS with < 0.1% sodium azide and 0.1% gelatin.

STORAGE

Store at 4° C, ****DO NOT FREEZE****. Stable for one year from the date of shipment. Non-hazardous. No MSDS required.

APPLICATIONS

Bcl-11b (H-42) is recommended for detection of Bcl-11b of mouse, rat and human origin by Western Blotting (starting dilution 1:200, dilution range 1:100-1:1000), immunoprecipitation [1-2 µg per 100-500 µg of total protein (1 ml of cell lysate)], immunofluorescence (starting dilution 1:50, dilution range 1:50-1:500) and solid phase ELISA (starting dilution 1:30, dilution range 1:30-1:3000).

Bcl-11b (H-42) is also recommended for detection of Bcl-11b in additional species, including canine, bovine and porcine.

Suitable for use as control antibody for Bcl-11b siRNA (h): sc-43579, Bcl-11b siRNA (m): sc-44942, Bcl-11b shRNA Plasmid (h): sc-43579-SH, Bcl-11b shRNA Plasmid (m): sc-44942-SH, Bcl-11b shRNA (h) Lentiviral Particles: sc-43579-V and Bcl-11b shRNA (m) Lentiviral Particles: sc-44942-V.

Molecular Weight of human Bcl-11b: 116 kDa.

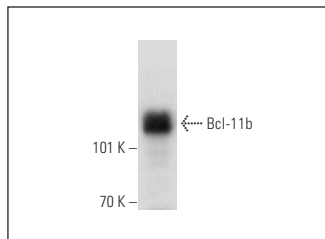
Molecular Weight of mouse Bcl-11b isoforms: 95/87/74 kDa.

Positive Controls: Jurkat nuclear extract: sc-2132, K-562 nuclear extract: sc-2130 or THP-1 nuclear extract: sc-24963.

RECOMMENDED SECONDARY REAGENTS

To ensure optimal results, the following support (secondary) reagents are recommended: 1) Western Blotting: use goat anti-rabbit IgG-HRP: sc-2004 (dilution range: 1:2000-1:100,000) or Cruz Marker™ compatible goat anti-rabbit IgG-HRP: sc-2030 (dilution range: 1:2000-1:5000), Cruz Marker™ Molecular Weight Standards: sc-2035, TBS Blotto A Blocking Reagent: sc-2333 and Western Blotting Luminol Reagent: sc-2048. 2) Immunoprecipitation: use Protein A/G PLUS-Agarose: sc-2003 (0.5 ml agarose/2.0 ml). 3) Immunofluorescence: use goat anti-rabbit IgG-FITC: sc-2012 (dilution range: 1:100-1:400) or goat anti-rabbit IgG-TR: sc-2780 (dilution range: 1:100-1:400) with UltraCruz™ Mounting Medium: sc-24941.

DATA



Bcl-11b (H-42): sc-98513. Western blot analysis of Bcl-11b expression in Jurkat nuclear extract.

RESEARCH USE

For research use only, not for use in diagnostic procedures.

PROTOCOLS

See our web site at www.scbt.com or our catalog for detailed protocols and support products.

MONOS
Satisfaction
Guaranteed

Try **Bcl-11b (F-4): sc-365320** or **Bcl-11b (F-5): sc-365988**, our highly recommended monoclonal alternatives to Bcl-11b (H-42).