

# Bestrophin-2 (H-188): sc-98568

## BACKGROUND

Bestrophin-2, also known as BEST2 or VMD2L1 (vitelliform macular dystrophy 2-like protein 1), is a 509 amino acid member of the bestrophin family of proteins. Members of the bestrophin family are transmembrane proteins that contain a high percentage of aromatic residues, a conserved RFP (Arg-Phe-Pro) motif and they function as anion channels. Bestrophin-2 forms a calcium-sensitive chloride channel located within the cell membrane. It is also believed that Bestrophin-2 channels may also conduct other physiological anions such as bicarbonate. Bestrophin-2 is mainly expressed in retinal pigment epithelium and colon.

## REFERENCES

1. Stöhr, H., Marquardt, A., Nanda, I., Schmid, M. and Weber, B.H. 2002. Three novel human VMD2-like genes are members of the evolutionary highly conserved RFP-TM family. *Eur. J. Hum. Genet.* 10: 281-284.
2. Sun, H., Tsunenari, T., Yau, K.W. and Nathans, J. 2002. The vitelliform macular dystrophy protein defines a new family of chloride channels. *Proc. Natl. Acad. Sci. USA* 99: 4008-4013.

## CHROMOSOMAL LOCATION

Genetic locus: BEST2 (human) mapping to 19p13.2; Best2 (mouse) mapping to 8 C3.

## SOURCE

Bestrophin-2 (H-188) is a rabbit polyclonal antibody raised against amino acids 322-509 mapping at the C-terminus of Bestrophin-2 of human origin.

## PRODUCT

Each vial contains 200 µg IgG in 1.0 ml of PBS with < 0.1% sodium azide and 0.1% gelatin.

## RESEARCH USE

For research use only, not for use in diagnostic procedures.

## APPLICATIONS

Bestrophin-2 (H-188) is recommended for detection of Bestrophin-2 of mouse, rat and human origin by Western Blotting (starting dilution 1:200, dilution range 1:100-1:1000), immunoprecipitation [1-2 µg per 100-500 µg of total protein (1 ml of cell lysate)], immunofluorescence (starting dilution 1:50, dilution range 1:50-1:500) and solid phase ELISA (starting dilution 1:30, dilution range 1:30-1:3000).

Suitable for use as control antibody for Bestrophin-2 siRNA (h): sc-72639, Bestrophin-2 siRNA (m): sc-72640, Bestrophin-2 shRNA Plasmid (h): sc-72639-SH, Bestrophin-2 shRNA Plasmid (m): sc-72640-SH, Bestrophin-2 shRNA (h) Lentiviral Particles: sc-72639-V and Bestrophin-2 shRNA (m) Lentiviral Particles: sc-72640-V.

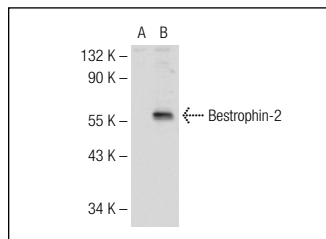
Molecular Weight of Bestrophin-2: 57 kDa.

Positive Controls: Bestrophin-2 (m): 293T Lysate: sc-118796 or Bestrophin-2 (m4): 293T Lysate: sc-118799.

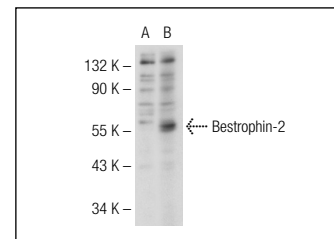
## RECOMMENDED SECONDARY REAGENTS

To ensure optimal results, the following support (secondary) reagents are recommended: 1) Western Blotting: use goat anti-rabbit IgG-HRP: sc-2004 (dilution range: 1:2000-1:100,000) or Cruz Marker™ compatible goat anti-rabbit IgG-HRP: sc-2030 (dilution range: 1:2000-1:5000), Cruz Marker™ Molecular Weight Standards: sc-2035, TBS Blotto A Blocking Reagent: sc-2333 and Western Blotting Luminol Reagent: sc-2048. 2) Immunoprecipitation: use Protein A/G PLUS-Agarose: sc-2003 (0.5 ml agarose/2.0 ml). 3) Immunofluorescence: use goat anti-rabbit IgG-FITC: sc-2012 (dilution range: 1:100-1:400) or goat anti-rabbit IgG-TR: sc-2780 (dilution range: 1:100-1:400) with UltraCruz™ Mounting Medium: sc-24941.

## DATA



Bestrophin-2 (H-188): sc-98568. Western blot analysis of Bestrophin-2 expression in non-transfected: sc-117752 (A) and mouse Bestrophin-2 transfected: sc-118796 (B) 293T whole cell lysates.



Bestrophin-2 (H-188): sc-98568. Western blot analysis of Bestrophin-2 expression in non-transfected: sc-117752 (A) and mouse Bestrophin-2 transfected: sc-118799 (B) 293T whole cell lysates.

## STORAGE

Store at 4° C, \*\*DO NOT FREEZE\*\*. Stable for one year from the date of shipment. Non-hazardous. No MSDS required.

## PROTOCOLS

See our web site at [www.scbt.com](http://www.scbt.com) or our catalog for detailed protocols and support products.



Try **Bestrophin-2 (D-7): sc-376351** or **Bestrophin-2 (B-5): sc-376660**, our highly recommended monoclonal alternatives to Bestrophin-2 (H-188).