

MEF-2B (M-84): sc-98595

BACKGROUND

The myocyte enhancer factor-2 (MEF-2) family of transcription factors associate with co-repressors or co-activators to regulate development and function of T cells, neuronal cells, and muscle cells. Four family members, termed MEF-2A, -2B, -2C, and -2D, arise from alternatively spliced transcripts. These members bind as homo- and heterodimers to the MEF-2 site in the promoter region of affected genes. Differential regulation in the expression of the four transcripts implies functional distinction for each during embryogenesis and development. The process of differentiation from mesodermal precursor cells to myoblasts has led to the discovery of a variety of tissue-specific factors that regulate muscle gene expression. The myogenic basic helix-loop-helix proteins, including MyoD, myogenin, Myf-5, and MRF4, are one class of identified factors. The MEF-2 family represents a second class of DNA binding regulatory proteins. Each of these proteins binds to the MEF-2 target DNA sequence present in the regulatory regions of many muscle-specific genes.

CHROMOSOMAL LOCATION

Genetic locus: Mef2b (mouse) mapping to 8 B3.3.

SOURCE

MEF-2B (M-84) is a rabbit polyclonal antibody raised against amino acids 207-285 mapping within an internal region of MEF-2B of mouse origin.

PRODUCT

Each vial contains 200 µg IgG in 1.0 ml of PBS with < 0.1% sodium azide and 0.1% gelatin. Also available as TransCruz reagent for Gel Supershift and ChIP applications, sc-98595 X, 200 µg/0.1 ml.

STORAGE

Store at 4° C, ****DO NOT FREEZE****. Stable for one year from the date of shipment. Non-hazardous. No MSDS required.

RESEARCH USE

For research use only, not for use in diagnostic procedures.

APPLICATIONS

MEF-2B (M-84) is recommended for detection of MEF-2B of mouse and rat origin by Western Blotting (starting dilution 1:200, dilution range 1:100-1:1000), immunoprecipitation [1-2 µg per 100-500 µg of total protein (1 ml of cell lysate)], immunofluorescence (starting dilution 1:50, dilution range 1:50-1:500) and solid phase ELISA (starting dilution 1:30, dilution range 1:30-1:3000).

Suitable for use as control antibody for MEF-2B siRNA (m): sc-38061, MEF-2B shRNA Plasmid (m): sc-38061-SH and MEF-2B shRNA (m) Lentiviral Particles: sc-38061-V.

MEF-2B (M-84) X TransCruz antibody is recommended for Gel Supershift and ChIP applications.

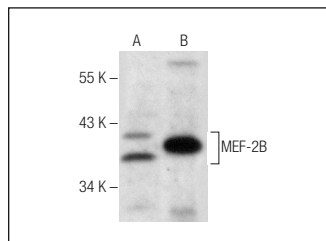
Molecular Weight of MEF-2B: 25 kDa.

Positive Controls: mouse heart extract: sc-2254, mouse brain extract: sc-2253 or C2C12 whole cell lysate: sc-364188.

RECOMMENDED SECONDARY REAGENTS

To ensure optimal results, the following support (secondary) reagents are recommended: 1) Western Blotting: use goat anti-rabbit IgG-HRP: sc-2004 (dilution range: 1:2000-1:100,000) or Cruz Marker™ compatible goat anti-rabbit IgG-HRP: sc-2030 (dilution range: 1:2000-1:5000), Cruz Marker™ Molecular Weight Standards: sc-2035, TBS Blotto A Blocking Reagent: sc-2333 and Western Blotting Luminol Reagent: sc-2048. 2) Immunoprecipitation: use Protein A/G PLUS-Agarose: sc-2003 (0.5 ml agarose/2.0 ml). 3) Immunofluorescence: use goat anti-rabbit IgG-FITC: sc-2012 (dilution range: 1:100-1:400) or goat anti-rabbit IgG-TR: sc-2780 (dilution range: 1:100-1:400) with UltraCruz™ Mounting Medium: sc-24941.

DATA



MEF-2B (M-84): sc-98595. Western blot analysis of MEF-2B expression in C2C12 whole cell lysate (A) and mouse brain tissue extract (B).

PROTOCOLS

See our web site at www.scbt.com or our catalog for detailed protocols and support products.


 MONOS
Satisfaction
Guaranteed

Try **MEF-2B (C-6): sc-376504**, our highly recommended monoclonal alternative to MEF-2B (M-84).