



P2Y11 (H-300): sc-98600

BACKGROUND

P2Y purinoceptor 11 (P2Y11) is a 374 amino acid protein belonging to the G protein-coupled receptor one family. P2Y11 is a multi-pass cell membrane protein that acts as a receptor for both ATP and ADP coupled to G proteins. Due to these interactions, P2Y11 is involved in phosphatidylinositol-calcium and adenylyl cyclase pathways. Induced by DMSO and retinoic acid, P2Y11 is highly expressed in spleen tissue. A putative *trans*-splicing event involving the gene that encodes P2Y11 and an upstream gene encoding PPAN has been found to result in a fusion protein, designated PPAN-P2RY11.

REFERENCES

- Communi, D., et al. 1997. Cloning of a human purinergic P2Y receptor coupled to phospholipase C and adenylyl cyclase. *J. Biol. Chem.* 272: 31969-31973.
- Online Mendelian Inheritance in Man, OMIM™. 2002. Johns Hopkins University, Baltimore, MD. MIM Number: 602697. World Wide Web URL: <http://www.ncbi.nlm.nih.gov/omim/>
- Lee, D.H., et al. 2006. Expression of P2 receptors in human B cells and Epstein-Barr virus-transformed lymphoblastoid cell lines. *BMC Immunol.* 7: 22.
- Ecke, D., et al. 2006. Opposite diastereoselective activation of P2Y1 and P2Y11 nucleotide receptors by adenosine 5'-O-(α -boranotriphosphate) analogues. *Br. J. Pharmacol.* 149: 416-423.
- Lakshmi, S. and Joshi, P.G. 2006. Activation of Src/kinase/phospholipase C/mitogen-activated protein kinase and induction of neurite expression by ATP, independent of nerve growth factor. *Neuroscience* 141: 179-189.
- Sundqvist, M. 2007. Developmental changes of purinergic control of intestinal motor activity during metamorphosis in the African clawed frog, *Xenopus laevis*. *Am. J. Physiol. Regul. Integr. Comp. Physiol.* 292: R1916-R1925.
- Amisten, S., et al. 2007. Increased risk of acute myocardial infarction and elevated levels of C-reactive protein in carriers of the Thr 87 variant of the ATP receptor P2Y11. *Eur. Heart J.* 28: 13-18.

CHROMOSOMAL LOCATION

Genetic locus: P2RY11 (human) mapping to 19p13.2.

SOURCE

P2Y11 (H-300) is a rabbit polyclonal antibody raised against amino acids 75-374 mapping at the C-terminus of P2Y11 of human origin.

PRODUCT

Each vial contains 200 μ g IgG in 1.0 ml of PBS with < 0.1% sodium azide and 0.1% gelatin.

STORAGE

Store at 4° C, ****DO NOT FREEZE****. Stable for one year from the date of shipment. Non-hazardous. No MSDS required.

APPLICATIONS

P2Y11 (H-300) is recommended for detection of P2Y11 of human origin by Western Blotting (starting dilution 1:200, dilution range 1:100-1:1000), immunoprecipitation [1-2 μ g per 100-500 μ g of total protein (1 ml of cell lysate)], immunofluorescence (starting dilution 1:50, dilution range 1:50-1:500) and solid phase ELISA (starting dilution 1:30, dilution range 1:30-1:3000).

Suitable for use as control antibody for P2Y11 siRNA (h): sc-76026, P2Y11 shRNA Plasmid (h): sc-76026-SH and P2Y11 shRNA (h) Lentiviral Particles: sc-76026-V.

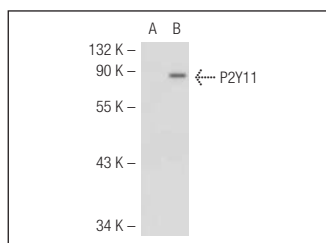
Molecular Weight of P2Y11: 40 kDa.

Positive Controls: P2Y11 (h): 293T Lysate: sc-117368.

RECOMMENDED SECONDARY REAGENTS

To ensure optimal results, the following support (secondary) reagents are recommended: 1) Western Blotting: use goat anti-rabbit IgG-HRP: sc-2004 (dilution range: 1:2000-1:100,000) or Cruz Marker™ compatible goat anti-rabbit IgG-HRP: sc-2030 (dilution range: 1:2000-1:5000), Cruz Marker™ Molecular Weight Standards: sc-2035, TBS Blotto A Blocking Reagent: sc-2333 and Western Blotting Luminol Reagent: sc-2048. 2) Immunoprecipitation: use Protein A/G PLUS-Agarose: sc-2003 (0.5 ml agarose/2.0 ml). 3) Immunofluorescence: use goat anti-rabbit IgG-FITC: sc-2012 (dilution range: 1:100-1:400) or goat anti-rabbit IgG-TR: sc-2780 (dilution range: 1:100-1:400) with UltraCruz™ Mounting Medium: sc-24941.

DATA



P2Y11 (H-300): sc-98600. Western blot analysis of P2Y11 expression in non-transfected: sc-117752 (A) and human P2Y11 transfected: sc-117368 (B) 293T whole cell lysates.

RESEARCH USE

For research use only, not for use in diagnostic procedures.

PROTOCOLS

See our web site at www.scbt.com or our catalog for detailed protocols and support products.