

# motilin (FL-115): sc-98603

## BACKGROUND

Motilin, also known as MLN, is a 115 amino acid secreted peptide that is a cleavage product of the promotilin precursor, a protein that is proteolytically processed to yield motilin and motilin-associated peptide (MAP). Existing in the cells of the small intestine, motilin plays an important role in the rhythmic contraction of duodenal and colonic smooth muscle and is also involved in the regulation of interdigestive gastrointestinal motility. The gene encoding motilin maps to human chromosome 6, which contains 170 million base pairs and comprises nearly 6% of the human genome. Deletion of a portion of the q arm of chromosome 6 is associated with early onset intestinal cancer, suggesting the presence of a cancer susceptibility locus. Additionally, Porphyria cutanea tarda, Parkinson's disease, Stickler syndrome and a susceptibility to bipolar disorder are all associated with genes that map to chromosome 6.

## REFERENCES

- Seino, Y., Tanaka, K., Takeda, J., Takahashi, H., Mitani, T., Kurono, M., Kayano, T., Koh, G., Fukumoto, H. and Yano, H. 1987. Sequence of an intestinal cDNA encoding human motilin precursor. *FEBS Lett.* 223: 74-76.
- Daikh, D.I., Douglass, J.O. and Adelman, J.P. 1989. Structure and expression of the human motilin gene. *DNA* 8: 615-621.
- Gasparini, P., Grifa, A., Savasta, S., Merlo, I., Bisceglia, L., Totaro, A. and Zelante, L. 1994. The motilin gene: subregional localisation, tissue expression, DNA polymorphisms and exclusion as a candidate gene for the HLA-associated immotile cilia syndrome. *Hum. Genet.* 94: 671-674.
- Feighner, S.D., Tan, C.P., McKee, K.K., Palyha, O.C., Hreniuk, D.L., Pong, S.S., Austin, C.P., Figueroa, D., MacNeil, D., Cascieri, M.A., Nargund, R., Bakshi, R., Abramovitz, M., Stocco, R., Kargman, S., O'Neill, G., Van Der Ploeg, L.H., Evans, J., Patchett, A.A., Smith, R.G. and Howard, A.D. 1999. Receptor for motilin identified in the human gastrointestinal system. *Science* 284: 2184-2188.
- Wierup, N., Björkqvist, M., Weström, B., Pierzynowski, S., Sundler, F. and Sjölund, K. 2007. Ghrelin and motilin are co-secreted from a prominent endocrine cell population in the small intestine. *J. Clin. Endocrinol. Metab.* 92: 3573-3581.

## CHROMOSOMAL LOCATION

Genetic locus: MLN (human) mapping to 6p21.3.

## SOURCE

motilin (FL-115) is a rabbit polyclonal antibody raised against amino acids 1-115 representing full length motilin of human origin.

## PRODUCT

Each vial contains 200 µg IgG in 1.0 ml of PBS with < 0.1% sodium azide and 0.1% gelatin.

## STORAGE

Store at 4° C, **\*\*DO NOT FREEZE\*\***. Stable for one year from the date of shipment. Non-hazardous. No MSDS required.

## APPLICATIONS

motilin (FL-115) is recommended for detection of motilin of human origin by Western Blotting (starting dilution 1:200, dilution range 1:100-1:1000), immunoprecipitation [1-2 µg per 100-500 µg of total protein (1 ml of cell lysate)], immunofluorescence (starting dilution 1:50, dilution range 1:50-1:500) and solid phase ELISA (starting dilution 1:30, dilution range 1:30-1:3000).

Suitable for use as control antibody for motilin siRNA (h): sc-75814, motilin shRNA Plasmid (h): sc-75814-SH and motilin shRNA (h) Lentiviral Particles: sc-75814-V.

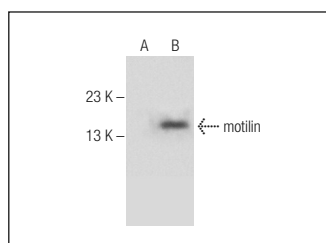
Molecular Weight of motilin: 13 kDa.

Positive Controls: human motilin transfected HEK293T whole cell lysate.

## RECOMMENDED SECONDARY REAGENTS

To ensure optimal results, the following support (secondary) reagents are recommended: 1) Western Blotting: use goat anti-rabbit IgG-HRP: sc-2004 (dilution range: 1:2000-1:100,000) or Cruz Marker™ compatible goat anti-rabbit IgG-HRP: sc-2030 (dilution range: 1:2000-1:5000), Cruz Marker™ Molecular Weight Standards: sc-2035, TBS Blotto A Blocking Reagent: sc-2333 and Western Blotting Luminol Reagent: sc-2048. 2) Immunoprecipitation: use Protein A/G PLUS-Agarose: sc-2003 (0.5 ml agarose/2.0 ml). 3) Immunofluorescence: use goat anti-rabbit IgG-FITC: sc-2012 (dilution range: 1:100-1:400) or goat anti-rabbit IgG-TR: sc-2780 (dilution range: 1:100-1:400) with UltraCruz™ Mounting Medium: sc-24941.

## DATA



motilin (FL-115): sc-98603. Western blot analysis of motilin expression in non-transfected (A) and human motilin transfected (B) HEK293T whole cell lysates.

## RESEARCH USE

For research use only, not for use in diagnostic procedures.



Try **motilin (H-9): sc-376605**, our highly recommended monoclonal alternative to motilin (FL-115).