

# FCHO1 (H-129): sc-98625

## BACKGROUND

FCHO1 (FCH domain only 1) is an 889 amino acid protein that contains one FCH domain and exists as multiple alternatively spliced isoforms. The gene encoding FCHO1 maps to human chromosome 19, which consists of over 63 million bases, houses approximately 1,400 genes and is recognized for having the greatest gene density of the human chromosomes. It is the genetic home for a number of immunoglobulin (Ig) superfamily members, including the killer cell and leukocyte Ig-like receptors, a number of ICAMs, the CEACAM and PSG family, and Fc receptors (FcRs). Key genes for eye color and hair color also map to chromosome 19.

## REFERENCES

- Zimmermann, W., et al. 1988. Chromosomal localization of the carcino-embryonic antigen gene family and differential expression in various tumors. *Cancer Res.* 48: 2550-2554.
- LaPoint, S.F., et al. 2000. Cerebral autosomal dominant arteriopathy with subcortical infarcts and leukoencephalopathy (CADASIL). *Adv. Anat. Pathol.* 7: 307-321.
- Trettel, F., et al. 2000. A fine physical map of the CACNA1A gene region on 19p13.1-p13.2 chromosome. *Gene* 241: 45-50.
- Buchet-Poyau, K., et al. 2002. Search for the second Peutz-Jeghers syndrome locus: exclusion of the STK13, PRKCG, KLK10, and PSCD2 genes on chromosome 19 and the STK11IP gene on chromosome 2. *Cytogenet. Genome Res.* 97: 171-178.
- Moodie, S.J., et al. 2002. Analysis of candidate genes on chromosome 19 in coeliac disease: an association study of the Kir and LILR gene clusters. *Eur. J. Immunogenet.* 29: 287-291.
- Grimwood, J., et al. 2004. The DNA sequence and biology of human chromosome 19. *Nature* 428: 529-535.
- Parham, P. 2005. Immunogenetics of killer cell immunoglobulin-like receptors. *Mol. Immunol.* 42: 459-462.
- Brocke-Heidrich, K., et al. 2006. Bcl-3 is induced by IL-6 via Stat3 binding to intronic enhancer HS4 and represses its own transcription. *Oncogene* 25: 7297-7304.
- Sakaushi, S., et al. 2007. Dynamic behavior of FCHO1 revealed by live-cell imaging microscopy: its possible involvement in clathrin-coated vesicle formation. *Biosci. Biotechnol. Biochem.* 71: 1764-1768.

## CHROMOSOMAL LOCATION

Genetic locus: FCHO1 (human) mapping to 19p13.11; Fcho1 (mouse) mapping to 8 B3.3.

## SOURCE

FCHO1 (H-129) is a rabbit polyclonal antibody raised against amino acids 733-855 mapping near the C-terminus of FCHO1 of human origin.

## RESEARCH USE

For research use only, not for use in diagnostic procedures.

## PRODUCT

Each vial contains 200 µg IgG in 1.0 ml of PBS with < 0.1% sodium azide and 0.1% gelatin.

## APPLICATIONS

FCHO1 (H-129) is recommended for detection of FCHO1 of mouse, rat and human origin by Western Blotting (starting dilution 1:200, dilution range 1:100-1:1000), immunoprecipitation [1-2 µg per 100-500 µg of total protein (1 ml of cell lysate)], immunofluorescence (starting dilution 1:50, dilution range 1:50-1:500) and solid phase ELISA (starting dilution 1:30, dilution range 1:30-1:3000).

FCHO1 (H-129) is also recommended for detection of FCHO1 in additional species, including canine, bovine and porcine.

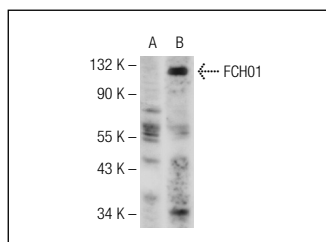
Suitable for use as control antibody for FCHO1 siRNA (h): sc-97726, FCHO1 siRNA (m): sc-105351, FCHO1 shRNA Plasmid (h): sc-97726-SH, FCHO1 shRNA Plasmid (m): sc-105351-SH, FCHO1 shRNA (h) Lentiviral Particles: sc-97726-V and FCHO1 shRNA (m) Lentiviral Particles: sc-105351-V.

Molecular Weight (predicted) of FCHO1: 97 kDa.

Molecular Weight (observed) of FCHO1: 121 kDa.

Positive Controls: K-562 whole cell lysate: sc-2203 or FCHO1 (m): 293T Lysate: sc-120228.

## DATA



FCHO1 (H-129): sc-98625. Western blot analysis of FCHO1 expression in non-transfected: sc-117752 (A) and mouse FCHO1 transfected: sc-120228 (B) 293T whole cell lysates.

## STORAGE

Store at 4° C, \*\*DO NOT FREEZE\*\*. Stable for one year from the date of shipment. Non-hazardous. No MSDS required.

## PROTOCOLS

See our web site at [www.scbt.com](http://www.scbt.com) or our catalog for detailed protocols and support products.



Try **FCHO1 (G-7): sc-365043**, our highly recommended monoclonal alternative to FCHO1 (H-129).