

CLP36 (H-137): sc-98686

BACKGROUND

CLP36, also known as PDLIM1, CLIM1 or Elfin, is a 329 amino acid cytoplasmic protein that associates with Actin stress fibers at the cytoskeleton. Expressed at high levels in skeletal muscle and heart and at lower levels in colon, small intestine, spleen, lung, placenta, kidney, liver, thymus and pancreas, CLP36 functions as a cytoskeletal protein that is thought to act as an adaptor, bringing target proteins to the cytoskeleton. Specifically, CLP36 interacts with Clik1 (a kinase) and recruits Clik1 to α -actinin-1, thereby facilitating the association of Clik1 with Actin stress fibers. CLP36 contains one PDZ domain and one LIM zinc-binding domain through which it conveys its protein-protein binding capabilities. Human CLP36 shares 88% sequence similarity with its rat counterpart, suggesting a conserved function between species.

REFERENCES

1. Bauer, K., et al. 2000. Human CLP36, a PDZ-domain and LIM-domain protein, binds to α -actinin-1 and associates with Actin filaments and stress fibers in activated platelets and endothelial cells. *Blood* 96: 4236-4245.
2. Kotaka, M., et al. 2000. Interaction of hCLIM1, an enigma family protein, with α -actinin 2. *J. Cell. Biochem.* 78: 558-565.

CHROMOSOMAL LOCATION

Genetic locus: PDLIM1 (human) mapping to 10q23.33; Pdlim1 (mouse) mapping to 19 C3.

SOURCE

CLP36 (H-137) is a rabbit polyclonal antibody raised against amino acids 109-245 mapping within an internal region of CLP36 of human origin.

PRODUCT

Each vial contains 200 μ g IgG in 1.0 ml of PBS with < 0.1% sodium azide and 0.1% gelatin.

APPLICATIONS

CLP36 (H-137) is recommended for detection of CLP36 of mouse, rat and human origin by Western Blotting (starting dilution 1:200, dilution range 1:100-1:1000), immunoprecipitation [1-2 μ g per 100-500 μ g of total protein (1 ml of cell lysate)], immunofluorescence (starting dilution 1:50, dilution range 1:50-1:500), immunohistochemistry (including paraffin-embedded sections) (starting dilution 1:50, dilution range 1:50-1:500) and solid phase ELISA (starting dilution 1:30, dilution range 1:30-1:3000).

CLP36 (H-137) is also recommended for detection of CLP36 in additional species, including equine, canine, bovine and porcine.

Suitable for use as control antibody for CLP36 siRNA (h): sc-72927, CLP36 siRNA (m): sc-72928, CLP36 shRNA Plasmid (h): sc-72927-SH, CLP36 shRNA Plasmid (m): sc-72928-SH, CLP36 shRNA (h) Lentiviral Particles: sc-72927-V and CLP36 shRNA (m) Lentiviral Particles: sc-72928-V.

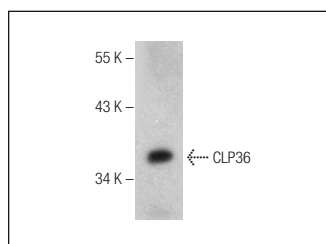
Molecular Weight of CLP36: 36 kDa.

Positive Controls: NIH/3T3 whole cell lysate: sc-2210, HeLa whole cell lysate: sc-2200 or L6 whole cell lysate: sc-364196.

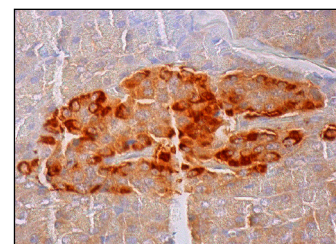
RECOMMENDED SECONDARY REAGENTS

To ensure optimal results, the following support (secondary) reagents are recommended: 1) Western Blotting: use goat anti-rabbit IgG-HRP: sc-2004 (dilution range: 1:2000-1:100,000) or Cruz Marker™ compatible goat anti-rabbit IgG-HRP: sc-2030 (dilution range: 1:2000-1:5000), Cruz Marker™ Molecular Weight Standards: sc-2035, TBS Blotto A Blocking Reagent: sc-2333 and Western Blotting Luminol Reagent: sc-2048. 2) Immunoprecipitation: use Protein A/G PLUS-Agarose: sc-2003 (0.5 ml agarose/2.0 ml). 3) Immunofluorescence: use goat anti-rabbit IgG-FITC: sc-2012 (dilution range: 1:100-1:400) or goat anti-rabbit IgG-TR: sc-2780 (dilution range: 1:100-1:400) with UltraCruz™ Mounting Medium: sc-24941. 4) Immunohistochemistry: use ImmunoCruz™: sc-2051 or ABC: sc-2018 rabbit IgG Staining Systems.

DATA



CLP36 (H-137): sc-98686. Western blot analysis of CLP36 expression in L6 whole cell lysate.



CLP36 (H-137): sc-98686. Immunoperoxidase staining of formalin fixed, paraffin-embedded human pancreas tissue showing cytoplasmic staining of Islets of Langerhans.

STORAGE

Store at 4° C, **DO NOT FREEZE**. Stable for one year from the date of shipment. Non-hazardous. No MSDS required.

RESEARCH USE

For research use only, not for use in diagnostic procedures.

PROTOCOLS

See our web site at www.scbt.com or our catalog for detailed protocols and support products.

MONOS
Satisfaction
Guaranteed

Try **CLP36 (H-8): sc-398899** or **CLP36 (B-9): sc-393084**, our highly recommended monoclonal alternatives to CLP36 (H-137).