

Rab 25 (H-51): sc-98697

BACKGROUND

The Ras-related superfamily of guanine nucleotide binding proteins includes the R-Ras, Rap, Ral/Rec and Rho/Rab subfamilies. Increasing data suggests an important role for Rab proteins in either endocytosis or in biosynthetic protein transport. The process of transporting newly synthesized proteins from the endoplasmic reticulum to various stacks of the Golgi complex and to secretory vesicles involves the movement of carrier vesicles and requires Rab protein function. Rab proteins are also an integral part of endocytic pathways. Rab 25, also known as CATX-8 or Rab 11C, is a member of the Rab family of proteins that is exclusively expressed in epithelial cells and participates in apical vesicle trafficking. Rab 25 is overexpressed in ovarian and breast cancer cells and has been associated with metastasis and tumor aggressiveness. The forced expression of Rab 25 in ovarian and breast cancer cells increases cell proliferation *in vivo*.

CHROMOSOMAL LOCATION

Genetic locus: RAB25 (human) mapping to 1q22; Rab25 (mouse) mapping to 3 F1.

SOURCE

Rab 25 (H-51) is a rabbit polyclonal antibody raised against amino acids 163-213 mapping at the C-terminus of Rab 25 of human origin.

PRODUCT

Each vial contains 200 µg IgG in 1.0 ml of PBS with < 0.1% sodium azide and 0.1% gelatin.

STORAGE

Store at 4° C, ****DO NOT FREEZE****. Stable for one year from the date of shipment. Non-hazardous. No MSDS required.

APPLICATIONS

Rab 25 (H-51) is recommended for detection of Rab 25 of mouse, rat and human origin by Western Blotting (starting dilution 1:200, dilution range 1:100-1:1000), immunoprecipitation [1-2 µg per 100-500 µg of total protein (1 ml of cell lysate)], immunofluorescence (starting dilution 1:50, dilution range 1:50-1:500) and solid phase ELISA (starting dilution 1:30, dilution range 1:30-1:3000).

Rab 25 (H-51) is also recommended for detection of Rab 25 in additional species, including equine, canine, bovine and porcine.

Suitable for use as control antibody for Rab 25 siRNA (h): sc-76325, Rab 25 siRNA (m): sc-76326, Rab 25 shRNA Plasmid (h): sc-76325-SH, Rab 25 shRNA Plasmid (m): sc-76326-SH, Rab 25 shRNA (h) Lentiviral Particles: sc-76325-V and Rab 25 shRNA (m) Lentiviral Particles: sc-76326-V.

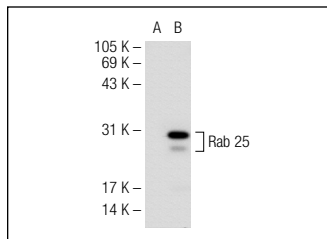
Molecular Weight of Rab 25: 24 kDa.

Positive Controls: Rab 25 (h3): 293T Lysate: sc-177814, Rab 25 (h): 293T Lysate: sc-114009 or K-562 whole cell lysate: sc-2203.

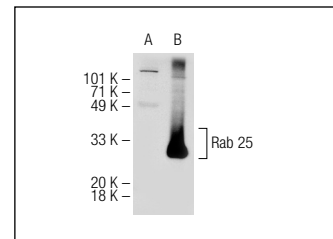
RECOMMENDED SECONDARY REAGENTS

To ensure optimal results, the following support (secondary) reagents are recommended: 1) Western Blotting: use goat anti-rabbit IgG-HRP: sc-2004 (dilution range: 1:2000-1:100,000) or Cruz Marker™ compatible goat anti-rabbit IgG-HRP: sc-2030 (dilution range: 1:2000-1:5000), Cruz Marker™ Molecular Weight Standards: sc-2035, TBS Blotto A Blocking Reagent: sc-2333 and Western Blotting Luminol Reagent: sc-2048. 2) Immunoprecipitation: use Protein A/G PLUS-Agarose: sc-2003 (0.5 ml agarose/2.0 ml). 3) Immunofluorescence: use goat anti-rabbit IgG-FITC: sc-2012 (dilution range: 1:100-1:400) or goat anti-rabbit IgG-TR: sc-2780 (dilution range: 1:100-1:400) with UltraCruz™ Mounting Medium: sc-24941.

DATA



Rab 25 (H-51): sc-98697. Western blot analysis of Rab 25 expression in non-transfected: sc-117752 (A) and human Rab 25 transfected: sc-177814 (B) 293T whole cell lysates.



Rab 25 (H-51): sc-98697. Western blot analysis of Rab 25 expression in non-transfected: sc-117752 (A) and human Rab 25 transfected: sc-114009 (B) 293T whole cell lysates.

RESEARCH USE

For research use only, not for use in diagnostic procedures.

PROTOCOLS

See our web site at www.scbt.com or our catalog for detailed protocols and support products.


 MONOS
Satisfaction
Guaranteed

Try **Rab 25 (3F12F3): sc-65978** or **Rab 25 (D-3): sc-166204**, our highly recommended monoclonal alternatives to Rab 25 (H-51).