

FANCM (H-300): sc-98710

BACKGROUND

Fanconi anemia (FA) is an autosomal recessive disorder characterized by bone marrow failure, birth defects and chromosomal instability. At the cellular level, FA is characterized by spontaneous chromosomal breakage and a unique hypersensitivity to DNA cross-linking agents. The thirteen FA proteins that have been characterized are important for regulating chromosomal stability and genome surveillance. Eight of these proteins, namely FANCA, FANCB, FANCC, FANCE, FANCF, FANCG, FANCL and FANCM, comprise the FA core complex, which catalyzes a key reaction in DNA repair: the monoubiquitination of FANCD2. FANCM (Fanconi anemia, complementation group M) is a member of the DEAD-box helicase family of proteins and contains a DEAH helicase domain and a nuclease domain. Localizing to chromatin fractions, FANCM is phosphorylated in a cell cycle-dependent manner and is believed to function as an anchor, recruiting the FA core complex to chromatin. Mutations in the gene encoding FANCM can lead to Fanconi anemia.

REFERENCES

1. de Winter, J.P., et al. 2000. The Fanconi anemia protein FANCF forms a nuclear complex with FANCA, FANCC and FANCG. *Hum. Mol. Genet.* 9: 2665-2674.
2. Yagasaki, H., et al. 2001. A cytoplasmic serine protein kinase binds and may regulate the Fanconi anemia protein FANCA. *Blood* 98: 3650-3657.
3. Wilson, J.B., et al. 2001. The Chinese hamster FANCG/XRCC9 mutant NM3 fails to express the monoubiquitinated form of the FANCD2 protein, is hypersensitive to a range of DNA damaging agents and exhibits a normal level of spontaneous sister chromatid exchange. *Carcinogenesis* 22: 1939-1946.
4. Siddique, M.A., et al. 2001. Function of the Fanconi anemia pathway in Fanconi anemia complementation group F and D1 cells. *Exp. Hematol.* 29: 1448-1455.
5. Otsuki, T., et al. 2002. Phosphorylation of Fanconi anemia protein, FANCA, is regulated by Akt kinase. *Biochem. Biophys. Res. Commun.* 291: 628-634.

CHROMOSOMAL LOCATION

Genetic locus: FANCM (human) mapping to 14q21.2; Fancm (mouse) mapping to 12 C1.

SOURCE

FANCM (H-300) is a rabbit polyclonal antibody raised against amino acids 125-424 mapping near the N-terminus of FANCM of human origin.

PRODUCT

Each vial contains 200 µg IgG in 1.0 ml of PBS with < 0.1% sodium azide and 0.1% gelatin.

STORAGE

Store at 4° C, ****DO NOT FREEZE****. Stable for one year from the date of shipment. Non-hazardous. No MSDS required.

APPLICATIONS

FANCM (H-300) is recommended for detection of FANCM of mouse, rat and human origin by Western Blotting (starting dilution 1:200, dilution range 1:100-1:1000), immunoprecipitation [1-2 µg per 100-500 µg of total protein (1 ml of cell lysate)], immunofluorescence (starting dilution 1:50, dilution range 1:50-1:500) and solid phase ELISA (starting dilution 1:30, dilution range 1:30-1:3000).

FANCM (H-300) is also recommended for detection of FANCM in additional species, including equine, canine and porcine.

Suitable for use as control antibody for FANCM siRNA (h): sc-77313, FANCM siRNA (m): sc-77314, FANCM shRNA Plasmid (h): sc-77313-SH, FANCM shRNA Plasmid (m): sc-77314-SH, FANCM shRNA (h) Lentiviral Particles: sc-77313-V and FANCM shRNA (m) Lentiviral Particles: sc-77314-V.

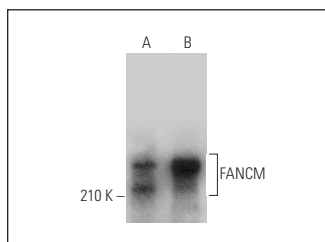
Molecular Weight of FANCM: 250 kDa.

Positive Controls: human brain tissue extract or IMR-32 cell lysate: sc-2409.

RECOMMENDED SECONDARY REAGENTS

To ensure optimal results, the following support (secondary) reagents are recommended: 1) Western Blotting: use goat anti-rabbit IgG-HRP: sc-2004 (dilution range: 1:2000-1:100,000) or Cruz Marker™ compatible goat anti-rabbit IgG-HRP: sc-2030 (dilution range: 1:2000-1:5000), Cruz Marker™ Molecular Weight Standards: sc-2035, TBS Blotto A Blocking Reagent: sc-2333 and Western Blotting Luminol Reagent: sc-2048. 2) Immunoprecipitation: use Protein A/G PLUS-Agarose: sc-2003 (0.5 ml agarose/2.0 ml). 3) Immunofluorescence: use goat anti-rabbit IgG-FITC: sc-2012 (dilution range: 1:100-1:400) or goat anti-rabbit IgG-TR: sc-2780 (dilution range: 1:100-1:400) with UltraCruz™ Mounting Medium: sc-24941.

DATA



FANCM (H-300): sc-98710. Western blot analysis of FANCM expression in human brain tissue extract (A) and IMR-32 whole cell lysate (B).

RESEARCH USE

For research use only, not for use in diagnostic procedures.

MONOS
Satisfaction
Guaranteed

Try **FANCM (M40-P2C6): sc-101389**, our highly recommended monoclonal alternative to FANCM (H-300).