

ARFGAP1 (H-300): sc-98714

BACKGROUND

ARFGAP1 (ADP-ribosylation factor GTPase activating protein 1), also known as ARF1 GAP, is a 406 amino acid protein that contains one ARF-GAP domain and localizes to the cytoplasm and the Golgi apparatus. Functioning as a GTPase-activating protein (GAP), ARFGAP1 interacts with ARF1 and promotes hydrolysis of ARF1-bound GTP, an event that is required for both the dissociation of coat proteins from Golgi structures and for the subsequent fusion of Golgi vesicles with target compartments. When overexpressed, ARFGAP1, whose activity is inhibited by phosphatidylcholine and stimulated by phosphoinositides, can induce the redistribution of the entire Golgi apparatus to the endoplasmic reticulum. Multiple isoforms of ARFGAP1 exist due to alternative splicing events.

REFERENCES

1. Cukierman, E., et al. 1995. The ARF1 GTPase-activating protein: zinc finger motif and Golgi complex localization. *Science* 270: 1999-2002.
2. Zhang, C., et al. 2000. Characterization, chromosomal assignment, and tissue expression of a novel human gene belonging to the ARF GAP family. *Genomics* 63: 400-408.
3. Majoul, I., et al. 2001. KDEL-cargo regulates interactions between proteins involved in COPI vesicle traffic: measurements in living cells using FRET. *Dev. Cell* 1: 139-153.
4. Yang, J.S., et al. 2002. ARFGAP1 promotes the formation of COPI vesicles, suggesting function as a component of the coat. *J. Cell Biol.* 159: 69-78.
5. Bernards, A., et al. 2004. GAP control: regulating the regulators of small GTPases. *Trends Cell Biol.* 14: 377-385.
6. Parnis, A., et al. 2006. Golgi localization determinants in ARFGAP1 and in new tissue-specific ARFGAP1 isoforms. *J. Biol. Chem.* 281: 3785-3792.
7. Natsume, W., et al. 2006. SMAP2, a novel ARF GTPase-activating protein, interacts with clathrin and clathrin assembly protein and functions on the AP-1-positive early endosome/*trans*-Golgi network. *Mol. Biol. Cell* 17: 2592-2603.
8. Lippincott-Schwartz, J., et al. 2006. Insights into COPI coat assembly and function in living cells. *Trends Cell Biol.* 16: e1-e4.
9. Luo, R. and Randazzo, P.A. 2008. Kinetic analysis of ARFGAP1 indicates a regulatory role for coatomer. *J. Biol. Chem.* 283: 21965-21977.

CHROMOSOMAL LOCATION

Genetic locus: ARFGAP1 (human) mapping to 20q13.33; Arfgap1 (mouse) mapping to 2 H4.

SOURCE

ARFGAP1 (H-300) is a rabbit polyclonal antibody raised against amino acids 1-286 mapping at the N-terminus of ARFGAP1 of human origin.

PRODUCT

Each vial contains 200 µg IgG in 1.0 ml of PBS with < 0.1% sodium azide and 0.1% gelatin.

APPLICATIONS

ARFGAP1 (H-300) is recommended for detection of ARFGAP1 of mouse, rat and human origin by Western Blotting (starting dilution 1:200, dilution range 1:100-1:1000), immunoprecipitation [1-2 µg per 100-500 µg of total protein (1 ml of cell lysate)], immunofluorescence (starting dilution 1:50, dilution range 1:50-1:500) and solid phase ELISA (starting dilution 1:30, dilution range 1:30-1:3000).

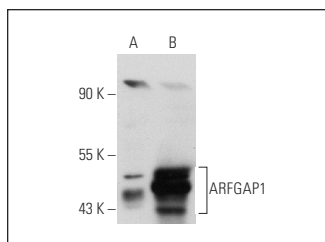
ARFGAP1 (H-300) is also recommended for detection of ARFGAP1 in additional species, including canine, bovine and avian.

Suitable for use as control antibody for ARFGAP1 siRNA (h): sc-72529, ARFGAP1 siRNA (m): sc-72530, ARFGAP1 shRNA Plasmid (h): sc-72529-SH, ARFGAP1 shRNA Plasmid (m): sc-72530-SH, ARFGAP1 shRNA (h) Lentiviral Particles: sc-72529-V and ARFGAP1 shRNA (m) Lentiviral Particles: sc-72530-V.

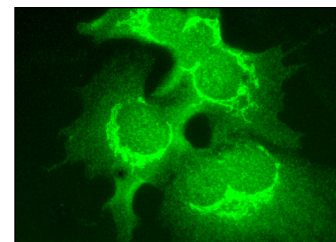
Molecular Weight of ARFGAP1: 45 kDa.

Positive Controls: ARFGAP1 (h): 293 Lysate: sc-114757 or mouse brain extract: sc-2253.

DATA



ARFGAP1 (H-300): sc-98714. Western blot analysis of ARFGAP1 expression in non-transfected: sc-110760 (A) and human ARFGAP1 transfected: sc-114757 (B) 293 whole cell lysates.



ARFGAP1 (H-300): sc-98714. Immunofluorescence staining of formalin-fixed HepG2 cells showing Golgi apparatus and cytoplasmic localization.

STORAGE

Store at 4° C, ****DO NOT FREEZE****. Stable for one year from the date of shipment. Non-hazardous. No MSDS required.

RESEARCH USE

For research use only, not for use in diagnostic procedures.

PROTOCOLS

See our web site at www.scbt.com or our catalog for detailed protocols and support products.



Try **ARFGAP1 (C-4): sc-271303** or **ARFGAP1/2/3 (F-3): sc-390955**, our highly recommended monoclonal alternatives to ARFGAP1 (H-300).