

KLF8 (H-103): sc-98720

BACKGROUND

The Krüppel-type zinc finger transcription factors comprise a conserved family of DNA binding proteins that are important in developmental regulation. The Krüppel zinc finger transcription factor was initially identified in *Drosophila* as a segmentation gene. Krüppel-like factor 8 (KLF8), also called basic Krüppel-like factor 3 and zinc finger protein 741, is a 359 amino acid transcriptional repressor that binds CACCC elements in DNA and activates or represses their target genes in a context-dependent manner. KLF8 is expressed ubiquitously in the nucleus of many cell types and its expression is elevated in several human cancers. KLF8 is post-translationally modified and negatively regulated by sumoylation via SUMO-1, SUMO-2 or SUMO-3. Mutation of the sumoylation site, Lysine 67, to Arginine 67 enhances the ability of KLF8 to repress or activate its target promoters.

REFERENCES

- van Vliet, J., et al. 2000. Human Krüppel-like factor 8: a CACCC-box binding protein that associates with CtBP and represses transcription. *Nucleic Acids Res.* 28: 1955-1962.
- Lossi, A.M., et al. 2002. Abnormal expression of the KLF8 (ZNF741) gene in a female patient with an X; autosome translocation t(X;21)(p11.2;q22.3) and non-syndromic mental retardation. *J. Med. Genet.* 39: 113-117.
- Zhao, J., et al. 2003. Identification of transcription factor KLF8 as a downstream target of focal adhesion kinase in its regulation of cyclin D1 and cell cycle progression. *Mol. Cell* 11: 1503-1515.
- Chiambaretta, F., et al. 2004. Cell and tissue specific expression of human Krüppel-like transcription factors in human ocular surface. *Mol. Vis.* 10: 901-909.
- Cox, B.D., et al. 2006. New concepts regarding focal adhesion kinase promotion of cell migration and proliferation. *J. Cell. Biochem.* 99: 35-52.
- Wei, H., et al. 2006. Sumoylation delimits KLF8 transcriptional activity associated with the cell cycle regulation. *J. Biol. Chem.* 281: 16664-16671.
- Hu, J.H., et al. 2007. Systematic RNAi studies on the role of Sp/KLF factors in globin gene expression and erythroid differentiation. *J. Mol. Biol.* 366: 1064-1073.

CHROMOSOMAL LOCATION

Genetic locus: KLF8 (human) mapping to Xp11.21; Klf8 (mouse) mapping to X F3.

SOURCE

KLF8 (H-103) is a rabbit polyclonal antibody raised against amino acids 183-285 mapping within an internal region of KLF8 of human origin.

PRODUCT

Each vial contains 200 µg IgG in 1.0 ml of PBS with < 0.1% sodium azide and 0.1% gelatin. Also available as TransCruz reagent for Gel Supershift and ChIP applications, sc-98720 X, 200 µg/0.1 ml.

APPLICATIONS

KLF8 (H-103) is recommended for detection of KLF8 of mouse, rat and human origin by Western Blotting (starting dilution 1:200, dilution range 1:100-1:1000), immunoprecipitation [1-2 µg per 100-500 µg of total protein (1 ml of cell lysate)], immunofluorescence (starting dilution 1:50, dilution range 1:50-1:500) and solid phase ELISA (starting dilution 1:30, dilution range 1:30-1:3000).

KLF8 (H-103) is also recommended for detection of KLF8 in additional species, including equine, canine, bovine and porcine.

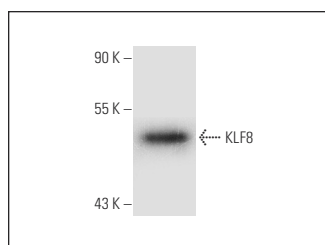
Suitable for use as control antibody for KLF8 siRNA (h): sc-75390, KLF8 siRNA (m): sc-75391, KLF8 shRNA Plasmid (h): sc-75390-SH, KLF8 shRNA Plasmid (m): sc-75391-SH, KLF8 shRNA (h) Lentiviral Particles: sc-75390-V and KLF8 shRNA (m) Lentiviral Particles: sc-75391-V.

KLF8 (H-103) X TransCruz antibody is recommended for Gel Supershift and ChIP applications.

Molecular Weight of KLF8: 39 kDa.

Positive Controls: Hep G2 cell lysate: sc-2227.

DATA



KLF8 (H-103): sc-98720. Western blot analysis of KLF8 expression in Hep G2 whole cell lysate.

STORAGE

Store at 4° C, **DO NOT FREEZE**. Stable for one year from the date of shipment. Non-hazardous. No MSDS required.

RESEARCH USE

For research use only, not for use in diagnostic procedures.

PROTOCOLS

See our web site at www.scbt.com or our catalog for detailed protocols and support products.

MONOS
Satisfaction
Guaranteed

Try **KLF8 (12D2): sc-134375**, our highly recommended monoclonal alternative to KLF8 (H-103).