

PHF13 (H-95): sc-98762

BACKGROUND

Zinc-finger proteins contain DNA-binding domains and have a wide variety of functions, most of which encompass some form of transcriptional activation or repression. PHF13 (PHD finger protein 13), also known as PHF5 or SPOC1, is a 300 amino acid protein that contains one PHD-type zinc finger, suggesting involvement in transcriptional regulation events. The gene encoding PHF13 maps to human chromosome 1, which spans 260 million base pairs, contains over 3,000 genes and comprises nearly 8% of the human genome. Chromosome 1 houses a large number of disease-associated genes, including those that are involved in familial adenomatous polyposis, Stickler syndrome, Parkinson's disease, Gaucher disease, schizophrenia and Usher syndrome. Aberrations in chromosome 1 are found in a variety of cancers, including head and neck cancer, malignant melanoma and multiple myeloma.

REFERENCES

- Blackwood, D.H., Fordyce, A., Walker, M.T., St Clair, D.M., Porteous, D.J. and Muir, W.J. 2001. Schizophrenia and affective disorders—cosegregation with a translocation at chromosome 1q42 that directly disrupts brain-expressed genes: clinical and P300 findings in a family. *Am. J. Hum. Genet.* 69: 428-433
- Weise, A., Starke, H., Mrasek, K., Claussen, U. and Liehr, T. 2005. New insights into the evolution of chromosome 1. *Cytogenet. Genome Res.* 108: 217-222.
- Mohrmann, G., Hengstler, J.G., Hofmann, T.G., Endeke, S.U., Lee, B., Stelzer, C., Zabel, B., Brieger, J., Hasenclever, D., Tanner, B., Sagemueller, J., Sehoul, J., Will, H. and Winterpacht, A. 2005. SPOC1, a novel PHD-finger protein: association with residual disease and survival in ovarian cancer. *Int. J. Cancer* 116: 547-554.
- Lans, H. and Hoeijmakers, J.H. 2006. Cell biology: aging nucleus gets out of shape. *Nature* 440: 32-34.
- Marzin, Y., Jamet, D., Douet-Guilbert, N., Morel, F., Le Bris, M.J., Morice, P., Abgrall, J.F., Berthou, C. and De Braekeleer, M. 2006. Chromosome 1 abnormalities in multiple myeloma. *Anticancer Res.* 26: 953-959.

CHROMOSOMAL LOCATION

Genetic locus: PHF13 (human) mapping to 1p36.31; Phf13 (mouse) mapping to 4 E2.

SOURCE

PHF13 (H-95) is a rabbit polyclonal antibody raised against amino acids 126-220 mapping within an internal region of PHF13 of human origin.

PRODUCT

Each vial contains 200 µg IgG in 1.0 ml of PBS with < 0.1% sodium azide and 0.1% gelatin.

STORAGE

Store at 4° C, ****DO NOT FREEZE****. Stable for one year from the date of shipment. Non-hazardous. No MSDS required.

APPLICATIONS

PHF13 (H-95) is recommended for detection of PHF13 of mouse, rat and human origin by Western Blotting (starting dilution 1:200, dilution range 1:100-1:1000), immunoprecipitation [1-2 µg per 100-500 µg of total protein (1 ml of cell lysate)], immunofluorescence (starting dilution 1:50, dilution range 1:50-1:500) and solid phase ELISA (starting dilution 1:30, dilution range 1:30-1:3000).

Suitable for use as control antibody for PHF13 siRNA (h): sc-78690, PHF13 siRNA (m): sc-106406, PHF13 shRNA Plasmid (h): sc-78690-SH, PHF13 shRNA Plasmid (m): sc-106406-SH, PHF13 shRNA (h) Lentiviral Particles: sc-78690-V and PHF13 shRNA (m) Lentiviral Particles: sc-106406-V.

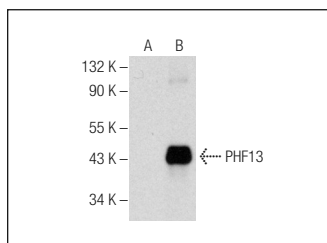
Molecular Weight of PHF13: 34 kDa.

Positive Controls: PHF13 (h): 293T Lysate: sc-371201.

RECOMMENDED SECONDARY REAGENTS

To ensure optimal results, the following support (secondary) reagents are recommended: 1) Western Blotting: use goat anti-rabbit IgG-HRP: sc-2004 (dilution range: 1:2000-1:100,000) or Cruz Marker™ compatible goat anti-rabbit IgG-HRP: sc-2030 (dilution range: 1:2000-1:5000), Cruz Marker™ Molecular Weight Standards: sc-2035, TBS Blotto A Blocking Reagent: sc-2333 and Western Blotting Luminol Reagent: sc-2048. 2) Immunoprecipitation: use Protein A/G PLUS-Agarose: sc-2003 (0.5 ml agarose/2.0 ml). 3) Immunofluorescence: use goat anti-rabbit IgG-FITC: sc-2012 (dilution range: 1:100-1:400) or goat anti-rabbit IgG-TR: sc-2780 (dilution range: 1:100-1:400) with UltraCruz™ Mounting Medium: sc-24941.

DATA



PHF13 (H-95): sc-98762. Western blot analysis of PHF13 expression in non-transfected: sc-117752 (A) and human PHF13 transfected: sc-371201 (B) 293T whole cell lysates.

RESEARCH USE

For research use only, not for use in diagnostic procedures.

MONOS
Satisfaction
Guaranteed

Try **PHF13 (G-9): sc-376086** or **PHF13 (E-4): sc-376085**, our highly recommended monoclonal alternatives to PHF13 (H-95).