

LCAT (M-60): sc-98873

BACKGROUND

The lipase gene family belongs to one of the most robust genetic super-families found in living organisms, which includes esterases and thioesterases. Members of the AB hydrolase subfamily include hepatic lipase (HL), endothelial lipase (EL), lipoprotein lipase (LPL), pancreatic lipase (PL), gastric lipase (GL) and the lecithin-cholesterol acyltransferase (LCAT). These family members play a crucial role in the metabolism of lipids. LCAT esterifies cholesterol, which is required for cholesterol transport. LCAT deficiency has been implicated in fish-eye disease, a rare genetic disorder of high density lipoprotein (HDL) metabolism.

REFERENCES

- McIntyre, N. 1988. Familial LCAT deficiency and fish-eye disease. *J. Inher. Metab. Dis.* 1: 45-56.
- Teh, E.M., et al. 1999. Classical LCAT deficiency resulting from a novel homozygous dinucleotide deletion in exon 4 of the human lecithin: cholesterol acyltransferase gene causing a frameshift and stop codon at residue 144. *Atherosclerosis* 46: 141-151.
- Huesca-Gomez, C., et al. 2004. Contribution of cholesteryl ester transfer protein and lecithin: cholesterol acyltransferase to HDL size distribution. *Endocr. Res.* 30: 403-415.

CHROMOSOMAL LOCATION

Genetic locus: LCAT (human) mapping to 16q22.1; Lcat (mouse) mapping to 8 D3.

SOURCE

LCAT (M-60) is a rabbit polyclonal antibody raised against amino acids 328-387 mapping near the C-terminus of LCAT of mouse origin.

PRODUCT

Each vial contains 200 µg IgG in 1.0 ml of PBS with < 0.1% sodium azide and 0.1% gelatin.

APPLICATIONS

LCAT (M-60) is recommended for detection of precursor and mature LCAT of mouse, rat and, to a lesser extent, human origin by Western Blotting (starting dilution 1:200, dilution range 1:100-1:1000), immunoprecipitation [1-2 µg per 100-500 µg of total protein (1 ml of cell lysate)], immunofluorescence (starting dilution 1:50, dilution range 1:50-1:500) and solid phase ELISA (starting dilution 1:30, dilution range 1:30-1:3000).

LCAT (M-60) is also recommended for detection of precursor and mature LCAT in additional species, including equine, bovine and porcine.

Suitable for use as control antibody for LCAT siRNA (h): sc-60926, LCAT siRNA (m): sc-60927, LCAT shRNA Plasmid (h): sc-60926-SH, LCAT shRNA Plasmid (m): sc-60927-SH, LCAT shRNA (h) Lentiviral Particles: sc-60926-V and LCAT shRNA (m) Lentiviral Particles: sc-60927-V.

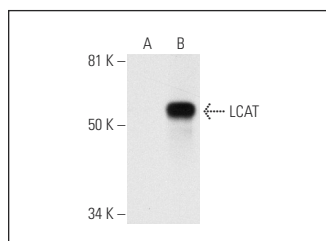
Molecular Weight of LCAT: 67 kDa.

Positive Controls: LCAT (m): 293T Lysate: sc-121314.

RECOMMENDED SECONDARY REAGENTS

To ensure optimal results, the following support (secondary) reagents are recommended: 1) Western Blotting: use goat anti-rabbit IgG-HRP: sc-2004 (dilution range: 1:2000-1:100,000) or Cruz Marker™ compatible goat anti-rabbit IgG-HRP: sc-2030 (dilution range: 1:2000-1:5000), Cruz Marker™ Molecular Weight Standards: sc-2035, TBS Blotto A Blocking Reagent: sc-2333 and Western Blotting Luminol Reagent: sc-2048. 2) Immunoprecipitation: use Protein A/G PLUS-Agarose: sc-2003 (0.5 ml agarose/2.0 ml). 3) Immunofluorescence: use goat anti-rabbit IgG-FITC: sc-2012 (dilution range: 1:100-1:400) or goat anti-rabbit IgG-TR: sc-2780 (dilution range: 1:100-1:400) with UltraCruz™ Mounting Medium: sc-24941.

DATA



LCAT (M-60): sc-98873. Western blot analysis of LCAT expression in non-transfected: sc-117752 (A) and mouse LCAT transfected: sc-121314 (B) 293T whole cell lysates.

STORAGE

Store at 4° C, **DO NOT FREEZE**. Stable for one year from the date of shipment. Non-hazardous. No MSDS required.

RESEARCH USE

For research use only, not for use in diagnostic procedures.

PROTOCOLS

See our web site at www.scbt.com or our catalog for detailed protocols and support products.

MONOS
Satisfaction
Guaranteed

Try **LCAT (D-2): sc-376682** or **LCAT (B-4): sc-398361**, our highly recommended monoclonal alternatives to LCAT (M-60).