

ETEA (H-300): sc-98899

BACKGROUND

ETEA, also designated UBX domain-containing protein 8 (UBXD8), is a 445 amino acid protein associated with atopic dermatitis (AD), a chronic, non-contagious, relapsing inflammatory skin disease characterized by eczematous skin lesions also referred to as eczematous dermatitis. Other atopic diseases such as hay fever, asthma and conjunctivitis often occur along with AD. ETEA shows higher expression in T cells and eosinophils of patients with AD than in T cells and eosinophils of unaffected individuals. T cells are influential in the regulation of the inflammatory process of this disease. The persistence of AD is attributed to dysregulated apoptosis in T cells, eosinophils and keratinocytes. ETEA may be involved in the resistance to apoptosis in T cells and eosinophils of AD patients.

REFERENCES

1. Leung, D.Y. 2000. Atopic dermatitis: new insights and opportunities for therapeutic intervention. *J. Allergy Clin. Immunol.* 105: 860-876.
2. Trautmann, A., et al. 2000. T cell-mediated FAS-induced keratinocyte apoptosis plays a key pathogenetic role in eczematous dermatitis. *J. Clin. Invest.* 106: 25-35.

CHROMOSOMAL LOCATION

Genetic locus: UBXD8 (human) mapping to 5q35.2; Ubxid8 (mouse) mapping to 13 B1.

SOURCE

ETEA (H-300) is a rabbit polyclonal antibody raised against amino acids 147-434 mapping at the C-terminus of ETEA of human origin.

PRODUCT

Each vial contains 200 µg IgG in 1.0 ml of PBS with < 0.1% sodium azide and 0.1% gelatin.

APPLICATIONS

ETEA (H-300) is recommended for detection of ETEA of mouse, rat and human origin by Western Blotting (starting dilution 1:200, dilution range 1:100-1:1000), immunoprecipitation [1-2 µg per 100-500 µg of total protein (1 ml of cell lysate)], immunofluorescence (starting dilution 1:50, dilution range 1:50-1:500) and solid phase ELISA (starting dilution 1:30, dilution range 1:30-1:3000).

ETEA (H-300) is also recommended for detection of ETEA in additional species, including equine, canine, bovine, porcine and avian.

Suitable for use as control antibody for ETEA siRNA (h): sc-60607, ETEA siRNA (m): sc-60608, ETEA shRNA Plasmid (h): sc-60607-SH, ETEA shRNA Plasmid (m): sc-60608-SH, ETEA shRNA (h) Lentiviral Particles: sc-60607-V and ETEA shRNA (m) Lentiviral Particles: sc-60608-V.

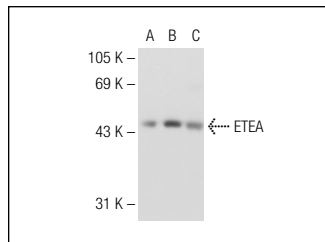
Molecular Weight of ETEA: 53 kDa.

Positive Controls: Jurkat whole cell lysate: sc-2204, MOLT-4 cell lysate: sc-2233 or ETEA (h2): 293T Lysate: sc-170422.

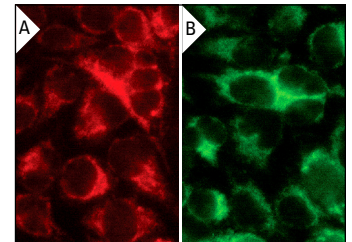
RECOMMENDED SECONDARY REAGENTS

To ensure optimal results, the following support (secondary) reagents are recommended: 1) Western Blotting: use goat anti-rabbit IgG-HRP: sc-2004 (dilution range: 1:2000-1:100,000) or Cruz Marker™ compatible goat anti-rabbit IgG-HRP: sc-2030 (dilution range: 1:2000-1:5000), Cruz Marker™ Molecular Weight Standards: sc-2035, TBS Blotto A Blocking Reagent: sc-2333 and Western Blotting Luminol Reagent: sc-2048. 2) Immunoprecipitation: use Protein A/G PLUS-Agarose: sc-2003 (0.5 ml agarose/2.0 ml). 3) Immunofluorescence: use goat anti-rabbit IgG-FITC: sc-2012 (dilution range: 1:100-1:400) or goat anti-rabbit IgG-TR: sc-2780 (dilution range: 1:100-1:400) with UltraCruz™ Mounting Medium: sc-24941.

DATA



ETEA (H-300): sc-98899. Western blot analysis of ETEA expression in non-transfected 293T: sc-117752 (A), human ETEA transfected 293T: sc-170422 (B) and Jurkat (C) whole cell lysates.



ETEA (H-300): sc-98899. Immunofluorescence staining of methanol-fixed HeLa cells showing cytoplasmic localization (A, B).

STORAGE

Store at 4° C, **DO NOT FREEZE**. Stable for one year from the date of shipment. Non-hazardous. No MSDS required.

RESEARCH USE

For research use only, not for use in diagnostic procedures.

PROTOCOLS

See our web site at www.scbt.com or our catalog for detailed protocols and support products.

MONOS
Satisfaction
Guaranteed

Try **ETEA (F-7): sc-374098** or **ETEA (D-10): sc-376071**, our highly recommended monoclonal alternatives to ETEA (H-300).