

PACRG (H-100): sc-98906

BACKGROUND

The deduced 257 amino acid protein PACRG (Parkin co-regulated gene) shows potential links to the ubiquitin/proteasome system. PACRG and Parkin are attached in a head-to-head arrangement on opposite DNA strands and share a common 5' flanking promoter region. The PACRG gene maps to chromosome 6q26; Northern blot analysis detects PACRG expression in all tissues examined except placenta. Using a positional cloning strategy in 197 Vietnamese leprosy simplex families (i.e. families with two unaffected parents and one affected child), significant connections between leprosy and 17 markers in the 5' regulatory region that PARK2 and PACRG share were observed. Possession of two or more of the 17 risk alleles is highly predictive of leprosy.

REFERENCES

- West, A.B., et al. 2003. Identification of a novel gene linked to Parkin via a bi-directional promoter. *J. Mol. Biol.* 326: 11-19.
- Lockhart, P.J., et al. 2004. It's a double knock-out! The quaking mouse is a spontaneous deletion of Parkin and Parkin co-regulated gene (PACRG). *Mov. Disord.* 19: 101-104.
- Mira, M.T., et al. 2004. Susceptibility to leprosy is associated with PARK2 and PACRG. *Nature* 427: 636-640.
- Alcais, A., et al. 2005. Genetic dissection of immunity in leprosy. *Curr. Opin. Immunol.* 17: 44-48.
- Dapper, J.D. and Justice, M.J. 2005. Defining the breakpoints of the quaking (viable) mouse mutation reveals a duplication from a Parkin intron. *Mov. Disord.* 20: 1369-1374.
- Dawe, H.R., et al. 2005. The Parkin co-regulated gene product, PACRG, is an evolutionarily conserved axonemal protein that functions in outer-doublet microtubule morphogenesis. *J. Cell Sci.* 118: 5421-5430.
- Deng, H., et al. 2005. Genetic analysis of Parkin co-regulated gene (PACRG) in patients with early-onset parkinsonism. *Neurosci. Lett.* 382: 297-299.
- Ali, S., et al. 2006. PARK2/PACRG polymorphisms and susceptibility to typhoid and paratyphoid fever. *Clin. Exp. Immunol.* 144: 425-431.

CHROMOSOMAL LOCATION

Genetic locus: PACRG (human) mapping to 6q26.

SOURCE

PACRG (H-100) is a rabbit polyclonal antibody raised against amino acids 1-100 mapping near the N-terminus of PACRG of human origin.

PRODUCT

Each vial contains 200 µg IgG in 1.0 ml of PBS with < 0.1% sodium azide and 0.1% gelatin.

STORAGE

Store at 4° C, ****DO NOT FREEZE****. Stable for one year from the date of shipment. Non-hazardous. No MSDS required.

APPLICATIONS

PACRG (H-100) is recommended for detection of PACRG of mouse, rat and human origin by Western Blotting (starting dilution 1:200, dilution range 1:100-1:1000), immunoprecipitation [1-2 µg per 100-500 µg of total protein (1 ml of cell lysate)], immunofluorescence (starting dilution 1:50, dilution range 1:50-1:500) and solid phase ELISA (starting dilution 1:30, dilution range 1:30-1:3000).

PACRG (H-100) is also recommended for detection of PACRG in additional species, including equine, canine and bovine.

Suitable for use as control antibody for PACRG siRNA (h): sc-61277, PACRG siRNA (m): sc-61278, PACRG shRNA Plasmid (h): sc-61277-SH, PACRG shRNA Plasmid (m): sc-61278-SH, PACRG shRNA (h) Lentiviral Particles: sc-61277-V and PACRG shRNA (m) Lentiviral Particles: sc-61278-V.

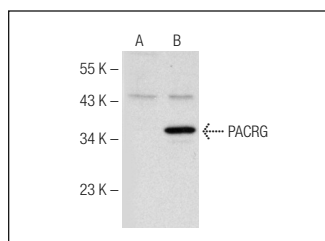
Molecular Weight of PACRG: 30 kDa.

Positive Controls: human PACRG transfected HEK293T whole cell lysate.

RECOMMENDED SECONDARY REAGENTS

To ensure optimal results, the following support (secondary) reagents are recommended: 1) Western Blotting: use goat anti-rabbit IgG-HRP: sc-2004 (dilution range: 1:2000-1:100,000) or Cruz Marker™ compatible goat anti-rabbit IgG-HRP: sc-2030 (dilution range: 1:2000-1:5000), Cruz Marker™ Molecular Weight Standards: sc-2035, TBS Blotto A Blocking Reagent: sc-2333 and Western Blotting Luminol Reagent: sc-2048. 2) Immunoprecipitation: use Protein A/G PLUS-Agarose: sc-2003 (0.5 ml agarose/2.0 ml). 3) Immunofluorescence: use goat anti-rabbit IgG-FITC: sc-2012 (dilution range: 1:100-1:400) or goat anti-rabbit IgG-TR: sc-2780 (dilution range: 1:100-1:400) with UltraCruz™ Mounting Medium: sc-24941.

DATA



PACRG (H-100): sc-98906. Western blot analysis of PACRG expression in non-transfected (A) and human PACRG transfected (B) HEK293T whole cell lysates.

RESEARCH USE

For research use only, not for use in diagnostic procedures.

MONOS
Satisfaction
Guaranteed

Try **PACRG (C-8): sc-373851**, our highly recommended monoclonal alternative to PACRG (H-100).