

# LGR6 (H-90): sc-99123

## BACKGROUND

G protein-coupled receptors (GPCRs), also designated seven transmembrane (7TM) receptors and heptahelical receptors, are a protein family which interact with G proteins (heterotrimeric GTPases) to synthesize intracellular second messengers such as diacylglycerol, cyclic AMP, inositol phosphates and calcium ions. Their diverse biological functions range from vision and olfaction to neuronal and endocrine signaling and are involved in many pathological conditions. The GPCR family represents the largest class of targets for modern drugs. Leucine-rich repeat-containing G protein-coupled receptor 6 (LGR6) is an orphan-A GPCR with an N-terminal ectodomain comprising variable leucine-rich repeats, a 7TM region and a unique C-terminal intracellular tail. The sequence of LGR6 is similar to TSHR, FSHR and LHR. LGR6 is predominantly expressed in the adrenal gland, ovary and uterus.

## CHROMOSOMAL LOCATION

Genetic locus: LGR6 (human) mapping to 1q32.1; Lgr6 (mouse) mapping to 1 E4.

## SOURCE

LGR6 (H-90) is a rabbit polyclonal antibody raised against amino acids 326-415 mapping within an N-terminal extracellular domain of LGR6 of human origin.

## PRODUCT

Each vial contains 200 µg IgG in 1.0 ml of PBS with < 0.1% sodium azide and 0.1% gelatin.

## STORAGE

Store at 4° C, **\*\*DO NOT FREEZE\*\***. Stable for one year from the date of shipment. Non-hazardous. No MSDS required.

## APPLICATIONS

LGR6 (H-90) is recommended for detection of LGR6 isoforms 1, 2 and 3 of mouse, rat and human origin by Western Blotting (starting dilution 1:200, dilution range 1:100-1:1000), immunoprecipitation [1-2 µg per 100-500 µg of total protein (1 ml of cell lysate)], immunofluorescence (starting dilution 1:50, dilution range 1:50-1:500) and solid phase ELISA (starting dilution 1:30, dilution range 1:30-1:3000).

LGR6 (H-90) is also recommended for detection of LGR6 isoforms 1, 2 and 3 in additional species, including equine, canine and porcine.

Suitable for use as control antibody for LGR6 siRNA (h): sc-60932, LGR6 siRNA (m): sc-60933, LGR6 shRNA Plasmid (h): sc-60932-SH, LGR6 shRNA Plasmid (m): sc-60933-SH, LGR6 shRNA (h) Lentiviral Particles: sc-60932-V and LGR6 shRNA (m) Lentiviral Particles: sc-60933-V.

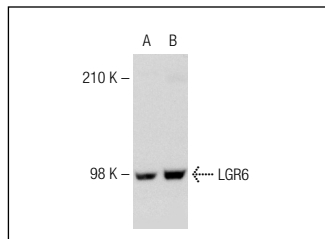
Molecular Weight of LGR6 isoforms: 104/89/99 kDa.

Positive Controls: HeLa whole cell lysate: sc-2200, HUV-EC-C whole cell lysate: sc-364180 or HISM cell lysate: sc-2229.

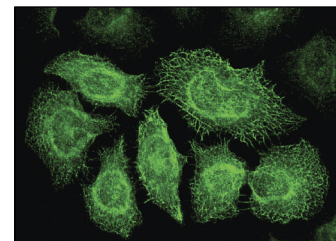
## RECOMMENDED SECONDARY REAGENTS

To ensure optimal results, the following support (secondary) reagents are recommended: 1) Western Blotting: use goat anti-rabbit IgG-HRP: sc-2004 (dilution range: 1:2000-1:100,000) or Cruz Marker™ compatible goat anti-rabbit IgG-HRP: sc-2030 (dilution range: 1:2000-1:5000), Cruz Marker™ Molecular Weight Standards: sc-2035, TBS Blotto A Blocking Reagent: sc-2333 and Western Blotting Luminol Reagent: sc-2048. 2) Immunoprecipitation: use Protein A/G PLUS-Agarose: sc-2003 (0.5 ml agarose/2.0 ml). 3) Immunofluorescence: use goat anti-rabbit IgG-FITC: sc-2012 (dilution range: 1:100-1:400) or goat anti-rabbit IgG-TR: sc-2780 (dilution range: 1:100-1:400) with UltraCruz™ Mounting Medium: sc-24941.

## DATA



LGR6 (H-90): sc-99123. Western blot analysis of LGR6 expression in HeLa (A) and HISM (B) whole cell lysates.



LGR6 (H-90): sc-99123. Immunofluorescence staining of methanol-fixed HeLa cells showing membrane localization.

## RESEARCH USE

For research use only, not for use in diagnostic procedures.

## PROTOCOLS

See our web site at [www.scbt.com](http://www.scbt.com) or our catalog for detailed protocols and support products.


 MONOS  
Satisfaction  
Guaranteed

Try **LGR6 (F-5): sc-393010**, our highly recommended monoclonal alternative to LGR6 (H-90).