

# Fibulin-3 (H-149): sc-99177

## BACKGROUND

Fibulin-1 is a modular glycoprotein component of elastic extracellular matrix fibers, basement membranes and blood. It can bind calcium, Fibronectin, Laminin, Nidogen and Fibrinogen. Estrogen exposure to ovarian cancer cell lines can upregulate Fibulin-1. Fibulin-2 is abundant in heart, placenta and ovarian tissue and binds several components of the extracellular matrix including aggrecan, versican and brevican. Fibulin-3, also known as EFEMP1, is a secreted protein. Defects in the gene for Fibulin-3 cause the autosomal dominant disease Doyme honeycomb retinal dystrophy (DHRD, also known as malattia leventinese) which is characterized by yellow-white deposits (drusen) that accumulate under the retinal pigment epithelium. Fibulin-3 is not present at the site of drusen formation in normal eyes. Fibulin-5 is an integrin-binding extracellular matrix protein that mediates endothelial cell adhesion.

## REFERENCES

- Ikegawa, S., et al. 1996. Structure and chromosomal assignment of the human S1-5 gene (FBNL) that is highly homologous to fibrillin. *Genomics* 35: 590-592.
- Stone, E.M., et al. 1999. A single EFEMP1 mutation associated with both malattia leventinese and Doyme honeycomb retinal dystrophy. *Nat. Genet.* 22: 199-202.
- Giltay, R., et al. 1999. Sequence, recombinant expression and tissue localization of two novel extracellular matrix proteins, fibulin-3 and fibulin-4. *Matrix Biol.* 18: 469-480.
- Matsumoto, M., et al. 2001. Dominant radial drusen and Arg345Trp EFEMP1 mutation. *Am. J. Ophthalmol.* 131: 810-812.
- Marmorstein, L.Y., et al. 2002. Aberrant accumulation of EFEMP1 underlies drusen formation in malattia leventinese and age-related macular degeneration. *Proc. Natl. Acad. Sci. USA* 99: 13067-13072.
- Marmorstein, L.Y., et al. 2004. Association of EFEMP1 with malattia leventinese and age-related macular degeneration: a mini-review. *Ophthalmic Genet.* 25: 219-226.
- Klenotic, P.A., et al. 2004. Tissue inhibitor of metalloproteinases-3 (TIMP-3) is a binding partner of epithelial growth factor-containing fibulin-like extracellular matrix protein 1 (EFEMP1). Implications for macular degenerations. *J. Biol. Chem.* 279: 30469-30473.
- Narendran, N., et al. 2005. Analysis of the EFEMP1 gene in individuals and families with early onset drusen. *Eye* 19: 11-15.

## CHROMOSOMAL LOCATION

Genetic locus: EFEMP1 (human) mapping to 2p16.1; Efemp1 (mouse) mapping to 11 A3.3.

## SOURCE

Fibulin-3 (H-149) is a rabbit polyclonal antibody raised against amino acids 67-215 mapping near the N-terminus of Fibulin-3 of human origin.

## RESEARCH USE

For research use only, not for use in diagnostic procedures.

## PRODUCT

Each vial contains 200 µg IgG in 1.0 ml of PBS with < 0.1% sodium azide and 0.1% gelatin.

## APPLICATIONS

Fibulin-3 (H-149) is recommended for detection of Fibulin-3 of mouse, rat and human origin by Western Blotting (starting dilution 1:200, dilution range 1:100-1:1000), immunoprecipitation [1-2 µg per 100-500 µg of total protein (1 ml of cell lysate)], immunofluorescence (starting dilution 1:50, dilution range 1:50-1:500) and solid phase ELISA (starting dilution 1:30, dilution range 1:30-1:3000).

Fibulin-3 (H-149) is also recommended for detection of Fibulin-3 in additional species, including canine.

Suitable for use as control antibody for Fibulin-3 siRNA (h): sc-44624, Fibulin-3 siRNA (m): sc-44625, Fibulin-3 shRNA Plasmid (h): sc-44624-SH, Fibulin-3 shRNA Plasmid (m): sc-44625-SH, Fibulin-3 shRNA (h) Lentiviral Particles: sc-44624-V and Fibulin-3 shRNA (m) Lentiviral Particles: sc-44625-V.

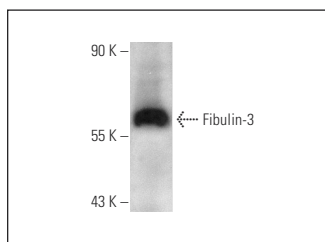
Molecular Weight of Fibulin-3: 55 kDa.

Positive Controls: HUVEC-C whole cell lysate.

## RECOMMENDED SECONDARY REAGENTS

To ensure optimal results, the following support (secondary) reagents are recommended: 1) Western Blotting: use goat anti-rabbit IgG-HRP: sc-2004 (dilution range: 1:2000-1:100,000) or Cruz Marker™ compatible goat anti-rabbit IgG-HRP: sc-2030 (dilution range: 1:2000-1:5000), Cruz Marker™ Molecular Weight Standards: sc-2035, TBS Blotto A Blocking Reagent: sc-2333 and Western Blotting Luminol Reagent: sc-2048. 2) Immunoprecipitation: use Protein A/G PLUS-Agarose: sc-2003 (0.5 ml agarose/2.0 ml). 3) Immunofluorescence: use goat anti-rabbit IgG-FITC: sc-2012 (dilution range: 1:100-1:400) or goat anti-rabbit IgG-TR: sc-2780 (dilution range: 1:100-1:400) with UltraCruz™ Mounting Medium: sc-24941.

## DATA



Fibulin-3 (H-149): sc-99177. Western blot analysis of Fibulin-3 expression in HUVEC-C whole cell lysate.

## STORAGE

Store at 4° C, \*\*DO NOT FREEZE\*\*. Stable for one year from the date of shipment. Non-hazardous. No MSDS required.