

# BST-2 (M-100): sc-99193

## BACKGROUND

Bone marrow stromal cells act as regulators for B cell growth and development through their surface molecules and cytokines. Bone marrow stromal antigen-2 (BST-2), also designated CD317 antigen, is a single-pass type II membrane protein. BST-2, which is expressed mainly on synovial cell lines and bone marrow stromal cell lines, is primarily expressed in liver, heart, placenta and lung tissues. BST-2 is thought to be involved in pre-B cell growth. It has been implicated in B cell activation in rheumatoid arthritis.

## REFERENCES

1. Kaisho, T., et al. 1994. BST-1, a surface molecule of bone marrow stromal cell lines that facilitates pre-B cell growth. *Proc. Natl. Acad. Sci. USA* 91: 5325-5329.
2. Ishikawa, J., et al. 1995. Molecular cloning and chromosomal mapping of a bone marrow stromal cell surface gene, BST-2, that may be involved in pre-B cell growth. *Genomics* 26: 527-534.
3. Ishihara, K., et al. 1996. Stage-specific expression of mouse BST-1/BP-3 on the early B and T cell progenitors prior to gene rearrangement of antigen receptor. *Intl. Immunol.* 8: 1395-1404.
4. Ohtomo, T., et al. 1999. Molecular cloning and characterization of a surface antigen preferentially overexpressed on multiple myeloma cells. *Biochem. Biophys. Res. Commun.* 258: 583-591.
5. Becker, M., et al. 2005. Distinct gene expression patterns in a tamoxifen-sensitive human mammary carcinoma xenograft and its tamoxifen-resistant subline MaCa 3366/TAM. *Mol. Cancer Ther.* 4: 151-168.

## CHROMOSOMAL LOCATION

Genetic locus: Bst2 (mouse) mapping to 8 B3.3.

## SOURCE

BST-2 (M-100) is a rabbit polyclonal antibody raised against amino acids 39-138 mapping near the N-terminus of BST-2 of mouse origin.

## PRODUCT

Each vial contains 200 µg IgG in 1.0 ml of PBS with < 0.1% sodium azide and 0.1% gelatin.

## APPLICATIONS

BST-2 (M-100) is recommended for detection of BST-2 of mouse origin by Western Blotting (starting dilution 1:200, dilution range 1:100-1:1000), immunoprecipitation [1-2 µg per 100-500 µg of total protein (1 ml of cell lysate)], immunofluorescence (starting dilution 1:50, dilution range 1:50-1:500) and solid phase ELISA (starting dilution 1:30, dilution range 1:30-1:3000).

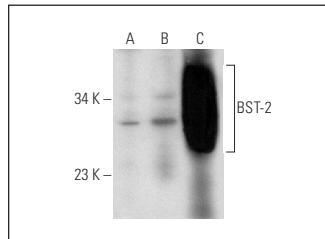
Suitable for use as control antibody for BST-2 siRNA (m): sc-141766, BST-2 shRNA Plasmid (m): sc-141766-SH and BST-2 shRNA (m) Lentiviral Particles: sc-141766-V.

Molecular Weight of BST-2: 30-36 kDa.

## RECOMMENDED SECONDARY REAGENTS

To ensure optimal results, the following support (secondary) reagents are recommended: 1) Western Blotting: use goat anti-rabbit IgG-HRP: sc-2004 (dilution range: 1:2000-1:100,000) or Cruz Marker™ compatible goat anti-rabbit IgG-HRP: sc-2030 (dilution range: 1:2000-1:5000), Cruz Marker™ Molecular Weight Standards: sc-2035, TBS Blotto A Blocking Reagent: sc-2333 and Western Blotting Luminol Reagent: sc-2048. 2) Immunoprecipitation: use Protein A/G PLUS-Agarose: sc-2003 (0.5 ml agarose/2.0 ml). 3) Immunofluorescence: use goat anti-rabbit IgG-FITC: sc-2012 (dilution range: 1:100-1:400) or goat anti-rabbit IgG-TR: sc-2780 (dilution range: 1:100-1:400) with UltraCruz™ Mounting Medium: sc-24941.

## DATA



BST-2 (M-100): sc-99193. Western blot analysis of BST-2 expression in NIH/3T3 (A) and F9 (B) whole cell lysates and mouse lung tissue extract (C).

## STORAGE

Store at 4° C, \*\*DO NOT FREEZE\*\*. Stable for one year from the date of shipment. Non-hazardous. No MSDS required.

## RESEARCH USE

For research use only, not for use in diagnostic procedures.

## PROTOCOLS

See our web site at [www.scbt.com](http://www.scbt.com) or our catalog for detailed protocols and support products.