

Delta (T-20): sc-9932

BACKGROUND

The LIN-12/Notch family of transmembrane receptors is believed to play a central role in development by regulating cell fate decisions. Notch proteins have been found to be overexpressed or rearranged in human tumors. Ligands for Notch include Jagged, Jagged-2 and Delta. While blocking the differentiation of progenitor cells into the B-cell lineage, Delta promotes the emergence of a population of cells with T-cell/NK-cell characteristics. The protein is a membrane protein expressed in heart, pancreas, brain and muscle during gastrulation and early organogenesis and in adult heart and lung.

REFERENCES

1. Simpson, P. 1994. The Notch receptors. Austin, TX. R.G. Landes Company.
2. Bettenhausen, B., et al. 1995. Transient and restricted expression during mouse embryogenesis of Dll1, a murine gene closely related to *Drosophila* Delta. Development 121: 2407-2418.
3. Girard, L., et al. 1996. Frequent provirus insertional mutagenesis of Notch1 in thymomas of MMTVD/Myc transgenic mice suggests a collaboration of c-Myc and Notch1 for oncogenesis. Genes Dev. 10: 1930-1944.

CHROMOSOMAL LOCATION

Genetic locus: DLL1 (human) mapping to 6q27; Dll1 (mouse) mapping to 17 A2.

SOURCE

Delta (T-20) is an affinity purified goat polyclonal antibody raised against a peptide mapping within an internal region of Delta of human origin.

PRODUCT

Each vial contains 200 µg IgG in 1.0 ml of PBS with < 0.1% sodium azide and 0.1% gelatin.

Blocking peptide available for competition studies, sc-9932 P, (100 µg peptide in 0.5 ml PBS containing < 0.1% sodium azide and 0.2% BSA).

APPLICATIONS

Delta (T-20) is recommended for detection of Delta of mouse, rat and human origin by Western Blotting (starting dilution 1:200, dilution range 1:100-1:1000), immunoprecipitation [1-2 µg per 100-500 µg of total protein (1 ml of cell lysate)], immunofluorescence (starting dilution 1:50, dilution range 1:50-1:500) and solid phase ELISA (starting dilution 1:30, dilution range 1:30-1:3000).

Delta (T-20) is also recommended for detection of Delta in additional species, including canine, bovine and porcine.

Suitable for use as control antibody for Delta siRNA (h): sc-37200, Delta siRNA (m): sc-37201, Delta shRNA Plasmid (h): sc-37200-SH, Delta shRNA Plasmid (m): sc-37201-SH, Delta shRNA (h) Lentiviral Particles: sc-37200-V and Delta shRNA (m) Lentiviral Particles: sc-37201-V.

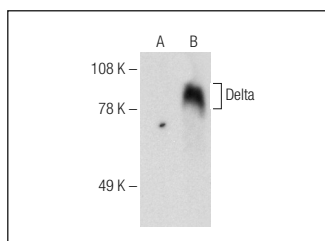
Molecular Weight of Delta: 75 kDa.

Positive Controls: Delta (h): 293T Lysate: sc-171132, mouse lung extract: sc-2390 or ECV304 cell lysate: sc-2269.

RECOMMENDED SECONDARY REAGENTS

To ensure optimal results, the following support (secondary) reagents are recommended: 1) Western Blotting: use donkey anti-goat IgG-HRP: sc-2020 (dilution range: 1:2000-1:100,000) or Cruz Marker™ compatible donkey anti-goat IgG-HRP: sc-2033 (dilution range: 1:2000-1:5000), Cruz Marker™ Molecular Weight Standards: sc-2035, TBS Blotto A Blocking Reagent: sc-2333 and Western Blotting Luminol Reagent: sc-2048. 2) Immunoprecipitation: use Protein A/G PLUS-Agarose: sc-2003 (0.5 ml agarose/2.0 ml). 3) Immunofluorescence: use donkey anti-goat IgG-FITC: sc-2024 (dilution range: 1:100-1:400) or donkey anti-goat IgG-TR: sc-2783 (dilution range: 1:100-1:400) with UltraCruz™ Mounting Medium: sc-24941.

DATA



Delta (T-20): sc-9932. Western blot analysis of Delta expression in non-transfected: sc-117752 (A) and human Delta transfected: sc-171132 (B) 293T whole cell lysates.

SELECT PRODUCT CITATIONS

1. Koo, B.K., et al. 2005. Mind bomb 1 is essential for generating functional Notch ligands to activate Notch. Development 132: 3459-3470.
2. Caton, M.L., et al. 2007. Notch-RBP-J signaling controls the homeostasis of CD8- dendritic cells in the spleen. J. Exp. Med. 204: 1653-1664.
3. Song, R., et al. 2008. Mind bomb 1 in the lymphopoietic niches is essential for T and marginal zone B cell development. J. Exp. Med. 205: 2525-2536.
4. Batts, S.A., et al. 2009. Notch signaling and Hes labeling in the normal and drug-damaged organ of Corti. Hear. Res. 249: 15-22.

STORAGE

Store at 4° C, **DO NOT FREEZE**. Stable for one year from the date of shipment. Non-hazardous. No MSDS required.

RESEARCH USE

For research use only, not for use in diagnostic procedures.

MONOS
Satisfaction
Guaranteed

Try **Delta (G-1): sc-377310** or **Delta (E-5): sc-377447**, our highly recommended monoclonal alternatives to Delta (T-20).