

CMTM6 (N-12): sc-99351

BACKGROUND

CMTM6 (CKLF-like MARVEL transmembrane domain containing 6), also known as CKLFSF6 (chemokine-like factor superfamily member 6), is a 183 amino acid member of the chemokine-like factor family. Members of the chemokine-like factor family share similarity with the chemokine and the transmembrane 4 superfamilies. CMTM6 is a multi-pass membrane protein containing one MARVEL domain. MARVEL domain-containing proteins are usually associated with specialized membrane microdomains. Through these specialized membrane microdomains, MARVEL proteins can influence a variety of cellular processes (i.e., vesicular transport carriers or tight junction regulation). CMTM6 is predominantly expressed in testis, placenta and leukocytes. Human CMTM6 shares 83% similarity with its mouse homolog.

REFERENCES

1. Sánchez-Pulido, L., Martín-Belmonte, F., Valencia, A. and Alonso, M.A. 2002. MARVEL: a conserved domain involved in membrane apposition events. *Trends Biochem. Sci.* 27: 599-601.
2. Han, W., Ding, P., Xu, M., Wang, L., Rui, M., Shi, S., Liu, Y., Zheng, Y., Chen, Y., Yang, T. and Ma, D. 2003. Identification of eight genes encoding chemokine-like factor superfamily members 1-8 (CKLFSF1-8) by in silico cloning and experimental validation. *Genomics* 81: 609-617.
3. Jin, C., Ding, P., Wang, Y. and Ma, D. 2005. Regulation of EGF receptor signaling by the MARVEL domain-containing protein CKLFSF8. *FEBS Lett.* 579: 6375-6382.
4. Li, T., Han, W., Yang, T., Ding, P., Rui, M., Liu, D., Wang, Y. and Ma, D. 2006. Molecular cloning and identification of mouse Cklfsf2a and Cklfsf2b, two homologues of human CKLFSF2. *Int. J. Biochem. Cell Biol.* 38: 420-429.
5. Shao, L., Cui, Y., Li, H., Liu, Y., Zhao, H., Wang, Y., Zhang, Y., Ng, K.M., Han, W., Ma, D. and Tao, Q. 2007. CMTM5 exhibits tumor suppressor activities and is frequently silenced by methylation in carcinoma cell lines. *Clin. Cancer Res.* 13: 5756-5762.
6. Li, D., Jin, C., Yin, C., Zhang, Y., Pang, B., Tian, L., Han, W., Ma, D. and Wang, Y. 2007. An alternative splice form of CMTM8 induces apoptosis. *Int. J. Biochem. Cell Biol.* 39: 2107-2119.

CHROMOSOMAL LOCATION

Genetic locus: CMTM6 (human) mapping to 3p22.3.

SOURCE

CMTM6 (N-12) is an affinity purified rabbit polyclonal antibody raised against a peptide mapping near the N-terminus of CMTM6 of human origin.

PRODUCT

Each vial contains 100 µg IgG in 1.0 ml of PBS with < 0.1% sodium azide and 0.1% gelatin.

Blocking peptide available for competition studies, sc-99351 P, (100 µg peptide in 0.5 ml PBS containing < 0.1% sodium azide and 0.2% BSA).

APPLICATIONS

CMTM6 (N-12) is recommended for detection of CMTM6 of human origin by Western Blotting (starting dilution 1:200, dilution range 1:100-1:1000), immunoprecipitation [1-2 µg per 100-500 µg of total protein (1 ml of cell lysate)], immunofluorescence (starting dilution 1:50, dilution range 1:50-1:500) and solid phase ELISA (starting dilution 1:30, dilution range 1:30-1:3000); non cross-reactive with other CMTM family members .

Suitable for use as control antibody for CMTM6 siRNA (h): sc-78185, CMTM6 shRNA Plasmid (h): sc-78185-SH and CMTM6 shRNA (h) Lentiviral Particles: sc-78185-V.

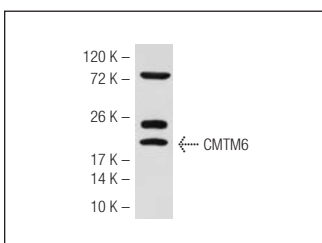
Molecular Weight of CMTM6: 21 kDa.

Positive Controls: Jurkat whole cell lysate: sc-2204.

RECOMMENDED SECONDARY REAGENTS

To ensure optimal results, the following support (secondary) reagents are recommended: 1) Western blotting: use goat anti-rabbit IgG-HRP: sc-2004 (dilution range: 1:2000-1:100,000) or Cruz Marker™ compatible goat anti-rabbit IgG-HRP: sc-2030 (dilution range: 1:2000-1:5000), Cruz Marker™ Molecular Weight Standards: sc-2035, TBS Blotto A Blocking Reagent: sc-2333 and Western Blotting Luminol Reagent: sc-2048. 2) Immunoprecipitation: use Protein A/G PLUS-Agarose: sc-2003 (0.5 ml agarose/2.0 ml). 3) Immunofluorescence: use goat anti-rabbit IgG-FITC: sc-2012 (dilution range: 1:100-1:400) or goat anti-rabbit IgG-TR: sc-2780 (dilution range: 1:100-1:400) with UltraCruz™ Mounting Medium: sc-24941.

DATA



CMTM6 (N-12): sc-99351. Western blot analysis of CMTM6 expression in Jurkat whole cell lysate.

STORAGE

Store at 4° C, **DO NOT FREEZE**. Stable for one year from the date of shipment. Non-hazardous. No MSDS required.

RESEARCH USE

For research use only, not for use in diagnostic procedures.