

RBM15B (G-16): sc-99610

BACKGROUND

Proteins containing RNA recognition motifs, including various hnRNP proteins, are implicated in the regulation of alternative splicing and protein components of snRNPs. The RBM (RNA-binding motif) gene family encodes proteins with an RNA binding motif that have been suggested to play a role in the modulation of apoptosis. RBM15B (RNA binding motif protein 15B), also known as OTT3 or HUMAGCGB, is an 890 amino acid protein which is expressed ubiquitously and localizes to the nucleoplasm of the nucleus. While known to give a granular staining pattern, RBM15B also indirectly colocalizes with Epstein-Barr virus BMLF1. RBM15B is a member of the SPEN (split-end) family of proteins which are known to be involved in repressor activities in multiple signaling pathways and likely have a role in binding RNA via interaction with spliceosome components. RBM15B contains three RRM (RNA recognition motif) domains and one SPOC domain and is encoded by a gene which maps to human chromosome 3.

REFERENCES

- Inoue, A., Takahashi, K.P., Kimura, M., Watanabe, T. and Morisawa, S. 1996. Molecular cloning of a RNA binding protein, S1-1. *Nucleic Acids Res.* 24: 2990-2997.
- Maris, C., Dominguez, C. and Allain, F.H. 2005. The RNA recognition motif, a plastic RNA-binding platform to regulate post-transcriptional gene expression. *FEBS J.* 272: 2118-2131.
- Hiriart, E., Gruffat, H., Buisson, M., Mikaelian, I., Keppler, S., Meresse, P., Mercher, T., Bernard, O.A., Sergeant, A. and Manet, E. 2005. Interaction of the Epstein-Barr virus mRNA export factor EB2 with human Spen proteins SHARP, OTT1, and a novel member of the family, OTT3, links Spen proteins with splicing regulation and mRNA export. *J. Biol. Chem.* 280: 36935-36945.
- Sutherland, L.C., Rintala-Maki, N.D., White, R.D. and Morin, C.D. 2005. RNA binding motif (RBM) proteins: a novel family of apoptosis modulators? *J. Cell. Biochem.* 94: 5-24.
- Online Mendelian Inheritance in Man, OMIM[™]. 2009. Johns Hopkins University, Baltimore, MD. MIM Number: 612602. World Wide Web URL: <http://www.ncbi.nlm.nih.gov/omim/>

CHROMOSOMAL LOCATION

Genetic locus: RBM15B (human) mapping to 3p21.2; Rbm15b (mouse) mapping to 9 F1.

SOURCE

RBM15B (G-16) is an affinity purified goat polyclonal antibody raised against a peptide mapping within an internal region of RBM15B of human origin.

PRODUCT

Each vial contains 200 µg IgG in 1.0 ml of PBS with < 0.1% sodium azide and 0.1% gelatin.

Blocking peptide available for competition studies, sc-99610 P, (100 µg peptide in 0.5 ml PBS containing < 0.1% sodium azide and 0.2% BSA).

APPLICATIONS

RBM15B (G-16) is recommended for detection of RBM15B of mouse, rat and human origin by Western Blotting (starting dilution 1:200, dilution range 1:100-1:1000), immunoprecipitation [1-2 µg per 100-500 µg of total protein (1 ml of cell lysate)], immunofluorescence (starting dilution 1:50, dilution range 1:50-1:500) and solid phase ELISA (starting dilution 1:30, dilution range 1:30-1:3000); non cross-reactive with other RBM family members.

Suitable for use as control antibody for RBM15B siRNA (h): sc-78000, RBM15B shRNA Plasmid (h): sc-78000-SH and RBM15B shRNA (h) Lentiviral Particles: sc-78000-V.

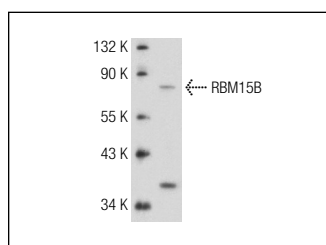
Molecular Weight of RBM15B: 120 kDa.

Positive Controls: ES-2 cell lysate: sc-24674.

RECOMMENDED SECONDARY REAGENTS

To ensure optimal results, the following support (secondary) reagents are recommended: 1) Western Blotting: use donkey anti-goat IgG-HRP: sc-2020 (dilution range: 1:2000-1:100,000) or Cruz Marker[™] compatible donkey anti-goat IgG-HRP: sc-2033 (dilution range: 1:2000-1:5000), Cruz Marker[™] Molecular Weight Standards: sc-2035, TBS Blotto A Blocking Reagent: sc-2333 and Western Blotting Luminol Reagent: sc-2048. 2) Immunoprecipitation: use Protein A/G PLUS-Agarose: sc-2003 (0.5 ml agarose/2.0 ml). 3) Immunofluorescence: use donkey anti-goat IgG-FITC: sc-2024 (dilution range: 1:100-1:400) or donkey anti-goat IgG-TR: sc-2783 (dilution range: 1:100-1:400) with UltraCruz[™] Mounting Medium: sc-24941.

DATA



RBM15B (G-16): sc-99610. Western blot analysis of RBM15B expression in ES-2 whole cell lysate.

STORAGE

Store at 4° C, ****DO NOT FREEZE****. Stable for one year from the date of shipment. Non-hazardous. No MSDS required.

RESEARCH USE

For research use only, not for use in diagnostic procedures.

PROTOCOLS

See our web site at www.scbt.com or our catalog for detailed protocols and support products.