

TMEM111 (S-19): sc-99672

BACKGROUND

TMEM111, also known as POB is a 261 amino acid multi-pass membrane protein that exists as multiple alternatively spliced isoforms which are encoded by a gene that maps to human chromosome 3. Chromosome 3 is made up of about 214 million bases encoding over 1,100 genes, including a chemokine receptor (CKR) gene cluster and a variety of human cancer-related gene loci. Key tumor suppressing genes on chromosome 3 include those that encode the apoptosis mediator RASSF1, the cell migration regulator HYAL1 and the angiogenesis suppressor SEMA3B. Marfan Syndrome, porphyria, von Hippel-Lindau syndrome, osteogenesis imperfecta and Charcot-Marie-tooth disease are a few of the numerous genetic diseases associated with chromosome 3.

REFERENCES

- Müller, S., Stanyon, R., Finelli, P., Archidiacono, N. and Wienberg, J. 2000. Molecular cytogenetic dissection of human chromosomes 3 and 21 evolution. *Proc. Natl. Acad. Sci. USA* 97: 206-211.
- Braga, E.A., Kashuba, V.I., Maliukova, A.V., Loginov, V.I., Senchenko, V.N., Bazov, I.V., Kiselev, L.L. and Zabarovskii, E.R. 2003. New tumor suppressor genes in hot spots of human chromosome 3: new methods of identification. *Mol. Biol.* 37: 194-211.
- Tsend-Ayush, E., Grützner, F., Yue, Y., Grossmann, B., Hänsel, U., Sudbrak, R. and Haaf, T. 2004. Plasticity of human chromosome 3 during primate evolution. *Genomics* 83: 193-202.
- Darai, E., Kost-Alimova, M., Kiss, H., Kansoul, H., Klein, G. and Imreh, S. 2005. Evolutionarily plastic regions at human 3p21.3 coincide with tumor breakpoints identified by the "elimination test." *Genomics* 86: 1-12.
- Yue, Y., Grossmann, B., Tsend-Ayush, E., Grützner, F., Ferguson-Smith, M.A., Yang, F. and Haaf, T. 2005. Genomic structure and paralogous regions of the inversion breakpoint occurring between human chromosome 3p12.3 and orangutan chromosome 2. *Cytogenet. Genome Res.* 108: 98-105.
- Yue, Y., Grossmann, B., Ferguson-Smith, M., Yang, F. and Haaf, T. 2005. Comparative cytogenetics of human chromosome 3q21.3 reveals a hot spot for ectopic recombination in hominoid evolution. *Genomics* 85: 36-47.
- Muzny, D.M., Scherer, S.E., Kaul, R., Wang, J., Yu, J., Sudbrak, R., Buhay, C.J., Chen, R., Cree, A., Ding, Y., Dugan-Rocha, S., Gill, R., Gunaratne, P., Harris, R.A., Hawes, A.C., Hernandez, J., Hodgson, A.V., Hume, J., Jackson, A., Khan, Z.M., Kovar-Smith, C., Lewis, L.R., Lozado, R.J., et al. 2006. The DNA sequence, annotation and analysis of human chromosome 3. *Nature* 440: 1194-1198.

CHROMOSOMAL LOCATION

Genetic locus: TMEM111 (human) mapping to 3p25.3.

STORAGE

Store at 4° C, ****DO NOT FREEZE****. Stable for one year from the date of shipment. Non-hazardous. No MSDS required.

RESEARCH USE

For research use only, not for use in diagnostic procedures.

SOURCE

TMEM111 (S-19) is an affinity purified rabbit polyclonal antibody raised against a peptide mapping within an internal region of TMEM111 of human origin.

PRODUCT

Each vial contains 100 µg IgG in 1.0 ml of PBS with < 0.1% sodium azide and 0.1% gelatin.

Blocking peptide available for competition studies, sc-99672 P, (100 µg peptide in 0.5 ml PBS containing < 0.1% sodium azide and 0.2% BSA).

APPLICATIONS

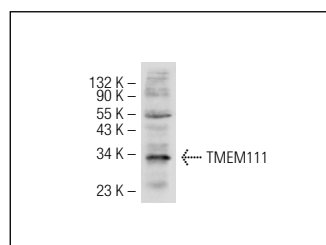
TMEM111 (S-19) is recommended for detection of TMEM111 of mouse, rat and human origin by Western Blotting (starting dilution 1:200, dilution range 1:100-1:1000), immunoprecipitation [1-2 µg per 100-500 µg of total protein (1 ml of cell lysate)], immunofluorescence (starting dilution 1:50, dilution range 1:50-1:500) and solid phase ELISA (starting dilution 1:30, dilution range 1:30-1:3000); non cross-reactive with other TMEM family members.

TMEM111 (S-19) is also recommended for detection of TMEM111 in additional species, including equine, canine, bovine, porcine and avian.

Suitable for use as control antibody for TMEM111 siRNA (h): sc-77987, TMEM111 siRNA (m): sc-154350, TMEM111 shRNA Plasmid (h): sc-77987-SH, TMEM111 shRNA Plasmid (m): sc-154350-SH, TMEM111 shRNA (h) Lentiviral Particles: sc-77987-V and TMEM111 shRNA (m) Lentiviral Particles: sc-154350-V.

Molecular Weight of TMEM111: 30 kDa.

DATA



TMEM111 (S-19): sc-99672. Western blot analysis of TMEM111 expression in NIH/3T3 whole cell lysate.

PROTOCOLS

See our web site at www.scbt.com or our catalog for detailed protocols and support products.