

C3orf34 (E-14): sc-99796

BACKGROUND

C3orf34 (chromosome 3 open reading frame 34), also known as MGC14126, is a 163 amino acid protein encoded by a gene that maps to human chromosome 3q29. Chromosome 3 is made up of about 214 million bases encoding over 1,100 genes. Notably, there is a chemokine receptor gene cluster and a variety of human cancer related loci on chromosome 3. Particular regions of the chromosome 3 short arm are deleted in many types of cancer cells. Key tumor suppressing genes on chromosome 3 encode apoptosis mediator RASSF1, cell migration regulator HYAL1 and angiogenesis suppressor SEMA3B. Marfan syndrome, porphyria, von Hippel-Lindau syndrome, osteogenesis imperfecta and Charcot-Marie-Tooth disease are a few of the numerous genetic diseases associated with chromosome 3.

REFERENCES

- Müller, S., Stanyon, R., Finelli, P., Archidiacono, N. and Wienberg, J. 2000. Molecular cytogenetic dissection of human chromosomes 3 and 21 evolution. *Proc. Natl. Acad. Sci. USA* 97: 206-211.
- Braga, E.A., Kashuba, V.I., Maliukova, A.V., Loginov, V.I., Senchenko, V.N., Bazov, I.V., Kiselev, L.L. and Zabarovskii, E.R. 2003. New tumor suppressor genes in hot spots of human chromosome 3: new methods of identification. *Mol. Biol.* 37: 194-211.
- Tsend-Ayush, E., Grütznher, F., Yue, Y., Grossmann, B., Hänsel, U., Sudbrak, R. and Haaf, T. 2004. Plasticity of human chromosome 3 during primate evolution. *Genomics* 83: 193-202.
- Yue, Y., Grossmann, B., Ferguson-Smith, M., Yang, F. and Haaf, T. 2005. Comparative cytogenetics of human chromosome 3q21.3 reveals a hot spot for ectopic recombination in hominoid evolution. *Genomics* 85: 36-47.
- Darai, E., Kost-Alimova, M., Kiss, H., Kansoul, H., Klein, G. and Imreh, S. 2005. Evolutionarily plastic regions at human 3p21.3 coincide with tumor breakpoints identified by the "elimination test". *Genomics* 86: 1-12.

CHROMOSOMAL LOCATION

Genetic locus: CEP19 (human) mapping to 3q29; Cep19 (mouse) mapping to 16 B2.

SOURCE

C3orf34 (E-14) is an affinity purified rabbit polyclonal antibody raised against a peptide mapping within an internal region of C3orf34 of human origin.

PRODUCT

Each vial contains 100 µg IgG in 1.0 ml of PBS with < 0.1% sodium azide and 0.1% gelatin.

Blocking peptide available for competition studies, sc-99796 P, (100 µg peptide in 0.5 ml PBS containing < 0.1% sodium azide and 0.2% BSA).

STORAGE

Store at 4° C, ****DO NOT FREEZE****. Stable for one year from the date of shipment. Non-hazardous. No MSDS required.

APPLICATIONS

C3orf34 (E-14) is recommended for detection of C3orf34 of human origin, 1500031L02Rik of mouse origin and the corresponding rat homolog of by Western Blotting (starting dilution 1:200, dilution range 1:100-1:1000), immunoprecipitation [1-2 µg per 100-500 µg of total protein (1 ml of cell lysate)], immunofluorescence (starting dilution 1:50, dilution range 1:50-1:500) and solid phase ELISA (starting dilution 1:30, dilution range 1:30-1:3000).

Suitable for use as control antibody for C3orf34 siRNA (h): sc-78284, 1500031L02Rik siRNA (m): sc-108244, C3orf34 shRNA Plasmid (h): sc-78284-SH, 1500031L02Rik shRNA Plasmid (m): sc-108244-SH, C3orf34 shRNA (h) Lentiviral Particles: sc-78284-V and 1500031L02Rik shRNA (m) Lentiviral Particles: sc-108244-V.

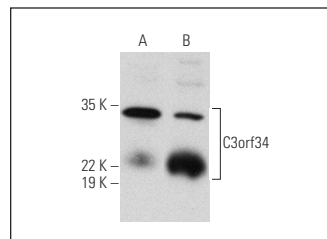
Molecular Weight of C3orf34: 19 kDa.

Positive Controls: human testis extract: sc-363781 or human brain tissue extract

RECOMMENDED SECONDARY REAGENTS

To ensure optimal results, the following support (secondary) reagents are recommended: 1) Western Blotting: use goat anti-rabbit IgG-HRP: sc-2004 (dilution range: 1:2000-1:100,000) or Cruz Marker™ compatible goat anti-rabbit IgG-HRP: sc-2030 (dilution range: 1:2000-1:5000), Cruz Marker™ Molecular Weight Standards: sc-2035, TBS Blotto A Blocking Reagent: sc-2333 and Western Blotting Luminol Reagent: sc-2048. 2) Immunoprecipitation: use Protein A/G PLUS-Agarose: sc-2003 (0.5 ml agarose/2.0 ml). 3) Immunofluorescence: use goat anti-rabbit IgG-FITC: sc-2012 (dilution range: 1:100-1:400) or goat anti-rabbit IgG-TR: sc-2780 (dilution range: 1:100-1:400) with UltraCruz™ Mounting Medium: sc-24941.

DATA



C3orf34 (E-14): sc-99796. Western blot analysis of C3orf34 expression in human testis (A) and human brain (B) tissue extracts.

RESEARCH USE

For research use only, not for use in diagnostic procedures.

PROTOCOLS

See our web site at www.scbt.com or our catalog for detailed protocols and support products.