

# MARCH10 (55-Y): sc-100510

## BACKGROUND

The RING-type zinc finger motif is present in a number of viral and eukaryotic proteins and is made of a conserved cysteine-rich domain that is able to bind two zinc atoms. Proteins that contain this conserved domain are generally involved in the ubiquitination pathway of protein degradation. MARCH10 (membrane-associated ring finger (C3HC4) 10), also known as RNF190 (ring finger protein 190) or MARCH-X, is a 808 amino acid protein with one RING-CH-type zinc finger domain. MARCH10 may function as an E3 ubiquitin-protein ligase that accepts a ubiquitin residue from an E2 ubiquitin-conjugating enzyme and immediately transfers that residue to a protein that is targeted for degradation.

## REFERENCES

1. Strausberg, R.L., Feingold, E.A., Grouse, L.H., Derge, J.G., Klausner, R.D., Collins, F.S., Wagner, L., Shenmen, C.M., Schuler, G.D., Altschul, S.F., Zeeberg, B., Buetow, K.H., Schaefer, C.F., Bhat, N.K., Hopkins, R.F., Jordan, H., Moore, T., Max, S.I., Wang, J., Hsieh, F., Diatchenko, L., et al. 2002. Generation and initial analysis of more than 15,000 full-length human and mouse cDNA sequences. *Proc. Natl. Acad. Sci. USA* 99: 16899-16903.
2. Gerhard, D.S., Wagner, L., Feingold, E.A., Shenmen, C.M., Grouse, L.H., Schuler, G., Klein, S.L., Old, S., Rasooly, R., Good, P., Guyer, M., Peck, A.M., Derge, J.G., Lipman, D., Collins, F.S., Jang, W., Sherry, S., Feolo, M., Misquitta, L., Lee, E., Rotmistrovsky, K., Greenhut, S.F., et al. 2004. The status, quality, and expansion of the NIH full-length cDNA project: the Mammalian Gene Collection (MGC). *Genome Res.* 14: 2121-2127.
3. Morokuma, Y., Nakamura, N., Kato, A., Notoya, M., Yamamoto, Y., Sakai, Y., Fukuda, H., Yamashina, S., Hirata, Y. and Hirose, S. 2007. MARCH-XI, a novel transmembrane ubiquitin ligase implicated in ubiquitin-dependent protein sorting in developing spermatids. *J. Biol. Chem.* 282: 24806-24815.

## CHROMOSOMAL LOCATION

Genetic locus: MARCH10 (human) mapping to 17q23.2.

## SOURCE

MARCH10 (55-Y) is a mouse monoclonal antibody raised against recombinant MARCH10 of human origin.

## PRODUCT

Each vial contains 100 µg IgG<sub>1</sub> kappa light chain in 1.0 ml of PBS with < 0.1% sodium azide and 0.1% gelatin.

## STORAGE

Store at 4° C, **\*\*DO NOT FREEZE\*\***. Stable for one year from the date of shipment. Non-hazardous. No MSDS required.

## PROTOCOLS

See our web site at [www.scbt.com](http://www.scbt.com) for detailed protocols and support products.

## APPLICATIONS

MARCH10 (55-Y) is recommended for detection of MARCH10 of human origin by Western Blotting (starting dilution 1:200, dilution range 1:100-1:1000), immunoprecipitation [1-2 µg per 100-500 µg of total protein (1 ml of cell lysate)] and solid phase ELISA (starting dilution 1:30, dilution range 1:30-1:3000).

Suitable for use as control antibody for MARCH10 siRNA (h): sc-93921, MARCH10 shRNA Plasmid (h): sc-93921-SH and MARCH10 shRNA (h) Lentiviral Particles: sc-93921-V.

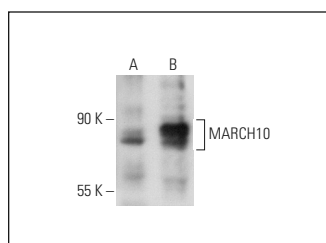
Molecular Weight of MARCH10: 90 kDa.

Positive Controls: K-562 whole cell lysate: sc-2203, human lung extract: sc-363767 or human testis extract: sc-363781.

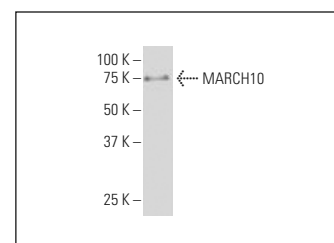
## RECOMMENDED SUPPORT REAGENTS

To ensure optimal results, the following support reagents are recommended: 1) Western Blotting: use m-IgGκ BPHRP: sc-516102 or m-IgGκ BPHRP (Cruz Marker): sc-516102-CM (dilution range: 1:1000-1:10000), Cruz Marker™ Molecular Weight Standards: sc-2035, UltraCruz® Blocking Reagent: sc-516214 and Western Blotting Luminol Reagent: sc-2048. 2) Immunoprecipitation: use Protein A/G PLUS-Agarose: sc-2003 (0.5 ml agarose/2.0 ml).

## DATA



MARCH10 (55-Y): sc-100510. Western blot analysis of MARCH10 expression in human lung (A) and human testis (B) tissue extracts.



MARCH10 (55-Y): sc-100510. Western blot analysis of MARCH10 expression in K-562 whole cell lysate.

## RESEARCH USE

For research use only, not for use in diagnostic procedures.