

# NARF (32-7): sc-100654

## BACKGROUND

Prenylation and methylation are two forms of protein modification, both of which are important for a variety of functions, including membrane attachment, protein-protein interactions and signaling events. NARF (nuclear prelamins A recognition factor), also known as IOP2, is a 456 amino acid nuclear protein that belongs to the NARF family. Expressed ubiquitously with highest expression in heart, skeletal muscle and brain, NARF binds to the C-terminal end of prenylated prelamins A and may be a member of a prelamins A-containing endoprotease complex. Additionally, via its association with prelamins A, NARF may be involved in heterochromatin organization. NARF is expressed as three isoforms due to alternative splicing events and, upon DNA damage, may be phosphorylated by Atm or ATR.

## REFERENCES

- Barton, R.M. and Worman, H.J. 1999. Prenylated prelamins A interacts with NARF, a novel nuclear protein. *J. Biol. Chem.* 274: 30008-30018.
- Online Mendelian Inheritance in Man, OMIM™. 2002. Johns Hopkins University, Baltimore, MD. MIM Number: 605349. World Wide Web URL: <http://www.ncbi.nlm.nih.gov/omim/>
- Hackstein, J.H. 2005. Eukaryotic Fe-hydrogenases — old eukaryotic heritage or adaptive acquisitions? *Biochem. Soc. Trans.* 33: 47-50.
- Yamada, M., Ohnishi, J., Ohkawara, B., Iemura, S., Satoh, K., Hyodo-Miura, J., Kawachi, K., Natsume, T. and Shibuya, H. 2006. NARF, an nemo-like kinase (NLK)-associated ring finger protein regulates the ubiquitylation and degradation of T cell factor/lymphoid enhancer factor (TCF/LEF). *J. Biol. Chem.* 281: 20749-20760.
- Lev-Maor, G., Sorek, R., Levanon, E.Y., Paz, N., Eisenberg, E. and Ast, G. 2007. RNA-editing-mediated exon evolution. *Genome Biol.* 8: R29.
- Lattanzi, G., Columbaro, M., Mattioli, E., Cenni, V., Camozzi, D., Wehnert, M., Santi, S., Riccio, M., Del Coco, R., Maraldi, N.M., Squarzoni, S., Foisner, R. and Capanni, C. 2007. Pre-Lamin A processing is linked to heterochromatin organization. *J. Cell. Biochem.* 102: 1149-1159.

## CHROMOSOMAL LOCATION

Genetic locus: NARF (human) mapping to 17q25.3.

## SOURCE

NARF (32-7) is a mouse monoclonal antibody raised against recombinant NARF of human origin.

## PRODUCT

Each vial contains 200 µl ascites containing IgM with < 0.1% sodium azide.

## STORAGE

For immediate and continuous use, store at 4° C for up to one month. For sporadic use, freeze in working aliquots in order to avoid repeated freeze/thaw cycles. If turbidity is evident upon prolonged storage, clarify solution by centrifugation.

## APPLICATIONS

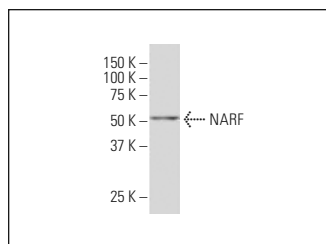
NARF (32-7) is recommended for detection of NARF of human origin by Western Blotting (starting dilution to be determined by researcher, dilution range 1:100-1:5000), immunoprecipitation [1-2 µl per 100-500 µg of total protein (1 ml of cell lysate)] and solid phase ELISA (starting dilution to be determined by researcher, dilution range 1:100-1:5000).

Suitable for use as control antibody for NARF siRNA (h): sc-93797, NARF shRNA Plasmid (h): sc-93797-SH and NARF shRNA (h) Lentiviral Particles: sc-93797-V.

Molecular Weight of NARF: 52 kDa.

Positive Controls: K-562 whole cell lysate: sc-2203.

## DATA



NARF (32-7): sc-100654. Western blot analysis of NARF expression in K-562 whole cell lysate.

## RESEARCH USE

For research use only, not for use in diagnostic procedures.

## PROTOCOLS

See our web site at [www.scbt.com](http://www.scbt.com) for detailed protocols and support products.