

# Swiprosin-2 (S-33): sc-100684

## BACKGROUND

The EF-hand domain is a twelve amino acid loop motif that is commonly found in proteins that participate in calcium-binding events within the cell. EF-hand domains generally exist in a pair that, together, form a stable four-helix bundle that enables the binding of calcium ions. Swiprosin-2, also known as EFHD1 (EF-hand domain-containing protein D1), SWS2, PP3051 or MST133, is a 239 amino acid protein that contains two EF-hand domains and is expressed in a wide variety of tissues, including brain, liver, heart, kidney, testis, ovaries and spleen. Expression of Swiprosin-2, a possible calcium-binding protein, is upregulated during neuronal differentiation, suggesting a role for Swiprosin-2 in brain development and maturation.

## REFERENCES

1. Tominaga, M. and Tomooka, Y. 2002. Novel genes cloned from a neuronal cell line newly established from a cerebellum of an adult p53<sup>-/-</sup> mouse. *Biochem. Biophys. Res. Commun.* 297: 473-479.
2. Lucas, B., Grigo, K., Erdmann, S., Lausen, J., Klein-Hitpass, L. and Ryffel, G.U. 2005. HNF4 $\alpha$  reduces proliferation of kidney cells and affects genes deregulated in renal cell carcinoma. *Oncogene* 24: 6418-6431.
3. Gifford, J.L., Walsh, M.P. and Vogel, H.J. 2007. Structures and metal-ion-binding properties of the Ca<sup>2+</sup>-binding helix-loop-helix EF-hand motifs. *Biochem. J.* 405: 199-221.
4. Capozzi, F., Luchinat, C., Micheletti, C. and Pontiggia, F. 2007. Essential dynamics of helices provide a functional classification of EF-hand proteins. *J. Proteome Res.* 6: 4245-4255.
5. Online Mendelian Inheritance in Man, OMIM™. 2007. Johns Hopkins University, Baltimore, MD. MIM Number: 611617. World Wide Web URL: <http://www.ncbi.nlm.nih.gov/omim/>
6. Suarez, M.C., Rocha, C.B., Sorenson, M.M., Silva, J.L. and Foguel, D. 2008. Free-energy linkage between folding and calcium binding in EF-hand proteins. *Biophys. J.* 95: 4820-4828.
7. Grigo, K., Wirsing, A., Lucas, B., Klein-Hitpass, L. and Ryffel, G.U. 2008. HNF4  $\alpha$  orchestrates a set of 14 genes to down-regulate cell proliferation in kidney cells. *Biol. Chem.* 389: 179-187.

## CHROMOSOMAL LOCATION

Genetic locus: EFHD1 (human) mapping to 2q37.1; Efh1 (mouse) mapping to 1 D.

## SOURCE

Swiprosin-2 (S-33) is a mouse monoclonal antibody raised against recombinant Swiprosin-2 of human origin.

## PRODUCT

Each vial contains 100  $\mu$ g IgG<sub>2a</sub> kappa light chain in 1.0 ml of PBS with < 0.1% sodium azide and 0.1% gelatin.

## RESEARCH USE

For research use only, not for use in diagnostic procedures.

## APPLICATIONS

Swiprosin-2 (S-33) is recommended for detection of Swiprosin-2 of mouse, rat and human origin by Western Blotting (starting dilution 1:200, dilution range 1:100-1:1000), immunoprecipitation [1-2  $\mu$ g per 100-500  $\mu$ g of total protein (1 ml of cell lysate)] and solid phase ELISA (starting dilution 1:30, dilution range 1:30-1:3000).

Suitable for use as control antibody for Swiprosin-2 siRNA (h): sc-94294, Swiprosin-2 siRNA (m): sc-153965, Swiprosin-2 shRNA Plasmid (h): sc-94294-SH, Swiprosin-2 shRNA Plasmid (m): sc-153965-SH, Swiprosin-2 shRNA (h) Lentiviral Particles: sc-94294-V and Swiprosin-2 shRNA (m) Lentiviral Particles: sc-153965-V.

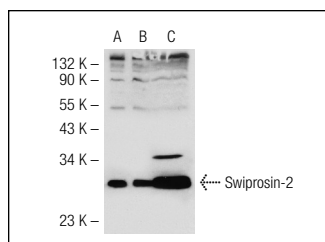
Molecular Weight of Swiprosin-2: 27 kDa.

Positive Controls: Swiprosin-2 (m): 293T Lysate: sc-123860 or HeLa whole cell lysate: sc-2200.

## RECOMMENDED SUPPORT REAGENTS

To ensure optimal results, the following support reagents are recommended: 1) Western Blotting: use m-IgG $\kappa$  BP-HRP: sc-516102 or m-IgG $\kappa$  BP-HRP (Cruz Marker): sc-516102-CM (dilution range: 1:1000-1:10000), Cruz Marker™ Molecular Weight Standards: sc-2035, TBS Blotto A Blocking Reagent: sc-2333 and Western Blotting Luminol Reagent: sc-2048. 2) Immunoprecipitation: use Protein A/G PLUS-Agarose: sc-2003 (0.5 ml agarose/2.0 ml).

## DATA



Swiprosin-2 (S-33): sc-100684. Western blot analysis of Swiprosin-2 expression in non-transfected 293T: sc-117752 (A), mouse Swiprosin-2 transfected 293T: sc-123860 (B) and HeLa (C) whole cell lysates.

## STORAGE

Store at 4° C, \*\*DO NOT FREEZE\*\*. Stable for one year from the date of shipment. Non-hazardous. No MSDS required.

## PROTOCOLS

See our web site at [www.scbt.com](http://www.scbt.com) for detailed protocols and support products.