

KLHL25 (K-20): sc-100774

BACKGROUND

KLHL25 (ectoderm-neural cortex protein 2, ENC2) is a cytoplasmic protein that contains six Kelch regions and a single BTB (POZ) domain. KLHL25 is highly homologous to another Kelch-like protein, ENC1, and it is believed to operate in a manner similar to other Kelch-domain containing proteins. Kelch-domain repeat containing proteins often act as modifiers of Actin fibers. Expressed early in embryogenesis, ENC1 helps to mediate neuronal process formation. It also appears to have a role in neural crest cell differentiation. KLHL25 likely functions as a substrate specific adapter for protein ubiquitinating complexes. KLHL25 is expressed in most tissues with highest expression in brain and liver.

REFERENCES

- Hernandez, M.C., Andres-Barquin, P.J., Martinez, S., Bulfone, A., Rubenstein, J.L. and Israel, M.A. 1997. ENC-1: a novel mammalian Kelch-related gene specifically expressed in the nervous system encodes an Actin-binding protein. *J. Neurosci.* 17: 3038-3051.
- Seng, S., Avraham, H.K., Jiang, S., Venkatesh, S. and Avraham, S. 2006. KLHL1/MRP2 mediates neurite outgrowth in a glycogen synthase kinase 3 β -dependent manner. *Mol. Cell. Biol.* 26: 8371-8384.
- Peeters, T., Louwet, W., Geladé, R., Nauwelaers, D., Thevelein, J.M. and Versele, M. 2006. Kelch-repeat proteins interacting with the G α protein Gpa2 bypass adenylate cyclase for direct regulation of protein kinase A in yeast. *Proc. Natl. Acad. Sci. USA* 103: 13034-13039.
- Angers, S., Thorpe, C.J., Biechele, T.L., Goldenberg, S.J., Zheng, N., MacCoss, M.J. and Moon, R.T. 2006. The KLHL12-Cullin-3 ubiquitin ligase negatively regulates the Wnt- β -catenin pathway by targeting dishevelled for degradation. *Nat. Cell Biol.* 8: 348-357.
- Peeters, T., Versele, M. and Thevelein, J.M. 2007. Directly from G α to protein kinase A: the Kelch repeat protein bypass of adenylate cyclase. *Trends Biochem. Sci.* 32: 547-554.
- Niranjan, T., Guo, X., Victor, J., Lu, A. and Hirsch, J.P. 2007. Kelch repeat protein interacts with the yeast G α subunit Gpa2p at a site that couples receptor binding to guanine nucleotide exchange. *J. Biol. Chem.* 282: 24231-24238.
- Nacac, T.G., Alajati, A., Leptien, K., Fulda, C., Weber, H., Miki, T., Czepluch, F.S., Waltenberger, J., Wieland, T., Augustin, H.G. and Kroll, J. 2007. The BTB-Kelch protein KLEIP controls endothelial migration and sprouting angiogenesis. *Circ. Res.* 100: 1155-1163.

CHROMOSOMAL LOCATION

Genetic locus: KLHL25 (human) mapping to 15q25.3; Khl25 (mouse) mapping to 7 D2.

SOURCE

KLHL25 (K-20) is a mouse monoclonal antibody raised against recombinant KLHL25 of human origin.

PRODUCT

Each vial contains 100 μ g IgG $_{2a}$ kappa light chain in 1.0 ml of PBS with < 0.1% sodium azide and 0.1% gelatin.

APPLICATIONS

KLHL25 (K-20) is recommended for detection of KLHL25 of mouse, rat and human origin by Western Blotting (starting dilution 1:200, dilution range 1:100-1:1000), immunoprecipitation [1-2 μ g per 100-500 μ g of total protein (1 ml of cell lysate)] and solid phase ELISA (starting dilution 1:30, dilution range 1:30-1:3000).

Suitable for use as control antibody for KLHL25 siRNA (h): sc-89948, KLHL25 siRNA (m): sc-146525, KLHL25 shRNA Plasmid (h): sc-89948-SH, KLHL25 shRNA Plasmid (m): sc-146525-SH, KLHL25 shRNA (h) Lentiviral Particles: sc-89948-V and KLHL25 shRNA (m) Lentiviral Particles: sc-146525-V.

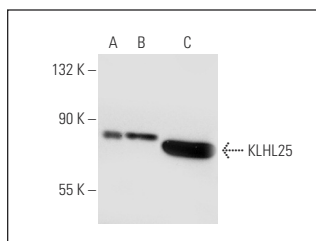
Molecular Weight of KLHL25: 66 kDa.

Positive Controls: Jurkat whole cell lysate: sc-2204, KLHL25 (m): 293T Lysate: sc-127047 or KLHL25 (h): 293T Lysate: sc-114802.

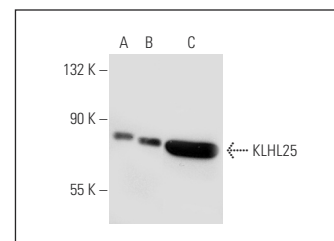
RECOMMENDED SUPPORT REAGENTS

To ensure optimal results, the following support reagents are recommended: 1) Western Blotting: use m-IgG κ BP-HRP: sc-516102 or m-IgG κ BP-HRP (Cruz Marker): sc-516102-CM (dilution range: 1:1000-1:10000), Cruz Marker™ Molecular Weight Standards: sc-2035, UltraCruz® Blocking Reagent: sc-516214 and Western Blotting Luminol Reagent: sc-2048. 2) Immunoprecipitation: use Protein A/G PLUS-Agarose: sc-2003 (0.5 ml agarose/2.0 ml).

DATA



KLHL25 (K-20): sc-100774. Western blot analysis of KLHL25 expression in non-transfected 293T: sc-117752 (A), human KLHL25 transfected 293T: sc-117752 (A), mouse KLHL25 transfected 293T: sc-114802 (B) and Jurkat (C) whole cell lysates.



KLHL25 (K-20): sc-100774. Western blot analysis of KLHL25 expression in non-transfected 293T: sc-117752 (A), mouse KLHL25 transfected 293T: sc-117752 (A), mouse KLHL25 transfected 293T: sc-114802 (B) and Jurkat (C) whole cell lysates.

STORAGE

Store at 4° C, **DO NOT FREEZE**. Stable for one year from the date of shipment. Non-hazardous. No MSDS required.

RESEARCH USE

For research use only, not for use in diagnostic procedures.

PROTOCOLS

See our web site at www.scbt.com for detailed protocols and support products.