

MATP (7K-2): sc-100780

BACKGROUND

The membrane-associated transporter protein (MATP) is a 530 amino acid protein that spans the lipid bilayer 12 times. MATP is a melanocyte differentiation antigen that is expressed in a high percentage of melanoma cell lines. MATP is transcriptionally modulated by MITF, a melanocyte-specific transcription factor that may act indirectly or bind to a remote regulatory sequence. MATP may play a role in skin cancer, as its gene is expressed in a high percentage of melanoma cell lines, but not at significant levels in normal tissues. Mutations in the MATP gene have also been linked to albinism.

REFERENCES

- Baxter, L.L. and Pavan, W.J. 2002. The oculocutaneous albinism type IV gene MATP is a new marker of pigment cell precursors during mouse embryonic development. *Mech. Dev.* 116: 209-212.
- Online Mendelian Inheritance in Man, OMIM™. 2002. Johns Hopkins University, Baltimore, MD. MIM Number: 606202. World Wide Web URL: <http://www.ncbi.nlm.nih.gov/omim/>
- Rundshagen, U., Zühlke, C., Opitz, S., Schwinger, E. and Käsmann-Kellner, B. 2004. Mutations in the MATP gene in five German patients affected by oculocutaneous albinism type 4. *Hum. Mutat.* 23: 106-110.
- Yuasa, I., Umetsu, K., Watanabe, G., Nakamura, H., Endoh, M. and Irizawa, Y. 2004. MATP polymorphisms in Germans and Japanese: the L374F mutation as a population marker for Caucasoids. *Int. J. Legal Med.* 118: 364-366.
- Blalock, J.E. 2005. The immune system as the sixth sense. *J. Intern. Med.* 257: 126-138.
- Graf, J., Hodgson, R. and van Daal, A. 2005. Single nucleotide polymorphisms in the MATP gene are associated with normal human pigmentation variation. *Hum. Mutat.* 25: 278-284.
- Inagaki, K., Suzuki, T., Ito, S., Suzuki, N., Fukai, K., Horiuchi, T., Tanaka, T., Manabe, E. and Tomita, Y. 2005. OCA4: evidence for a founder effect for the p.D157N mutation of the MATP gene in Japanese and Korean. *Pigment Cell Res.* 18: 385-388.
- Suzuki, T., Inagaki, K., Fukai, K., Obana, A., Lee, S.T. and Tomita, Y. 2005. A Korean case of oculocutaneous albinism type IV caused by a D157N mutation in the MATP gene. *Br. J. Dermatol.* 152: 174-175.

CHROMOSOMAL LOCATION

Genetic locus: SLC45A2 (human) mapping to 5p13.2.

SOURCE

MATP (7K-2) is a mouse monoclonal antibody raised against recombinant MATP of human origin.

PRODUCT

Each vial contains 50 µg IgG_{2b} kappa light chain in 0.5 ml of PBS with < 0.1% sodium azide and 0.1% gelatin.

APPLICATIONS

MATP (7K-2) is recommended for detection of MATP of human origin by Western Blotting (starting dilution 1:200, dilution range 1:100-1:1000), immunoprecipitation [1-2 µg per 100-500 µg of total protein (1 ml of cell lysate)] and solid phase ELISA (starting dilution 1:30, dilution range 1:30-1:3000).

Suitable for use as control antibody for MATP siRNA (h): sc-60986, MATP shRNA Plasmid (h): sc-60986-SH and MATP shRNA (h) Lentiviral Particles: sc-60986-V.

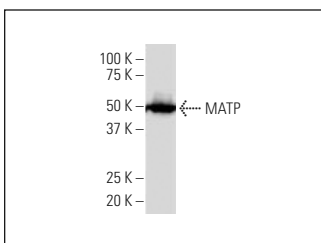
Molecular Weight of MATP: 58 kDa.

Positive Controls: SK-MEL-28 cell lysate: sc-2236, C32 whole cell lysate: sc-2205 or HL-60 whole cell lysate: sc-2209.

RECOMMENDED SUPPORT REAGENTS

To ensure optimal results, the following support reagents are recommended: 1) Western Blotting: use m-IgGκ BP-HRP: sc-516102 or m-IgGκ BP-HRP (Cruz Marker): sc-516102-CM (dilution range: 1:1000-1:10000), Cruz Marker™ Molecular Weight Standards: sc-2035, UltraCruz® Blocking Reagent: sc-516214 and Western Blotting Luminol Reagent: sc-2048. 2) Immunoprecipitation: use Protein A/G PLUS-Agarose: sc-2003 (0.5 ml agarose/2.0 ml).

DATA



MATP (7K-2): sc-100780. Western blot analysis of MATP expression in HL-60 whole cell lysate.

STORAGE

Store at 4° C, ****DO NOT FREEZE****. Stable for one year from the date of shipment. Non-hazardous. No MSDS required.

RESEARCH USE

For research use only, not for use in diagnostic procedures.

PROTOCOLS

See our web site at www.scbt.com for detailed protocols and support products.