

PAI-RBP1 (1B9): sc-100800

BACKGROUND

PAI-RBP1 (plasminogen activator inhibitor 1 RNA-binding protein), also known as SERBP1 (SERPINE1 mRNA-binding protein 1), CGI-55, CHD3IP (chromodomain helicase DNA binding protein 3 interacting protein), HABP4L or PAI-RBP1, is a membrane-associated protein that localizes to the nucleus, the perinuclear region of the cytoplasm and the plasma membrane. PAI-RBP1 is believed to play a role in the regulation of mRNA stability, as it specifically binds to the CRS (cyclic nucleotide-responsive sequence) motif of the PAI-1 mRNA and acts to stabilize the mRNA and regulate its expression. In addition, PAI-RBP1 interacts with Mi2- α and may be involved in chromatin remodeling. PAI-RBP1 also interacts with PGRMC1 and participates in the transduction of Progesterone's antiapoptotic action in ovarian cell types. The gene encoding PAI-RBP1 is overexpressed in ovarian cancer, suggesting a possible role for PAI-RBP1 in tumorigenesis and tumor metastasis.

CHROMOSOMAL LOCATION

Genetic locus: SERBP1 (human) mapping to 1p31.3; Serbp1 (mouse) mapping to 6 C1.

SOURCE

PAI-RBP1 (1B9) is a mouse monoclonal antibody raised against recombinant PAI-RBP1 of human origin.

PRODUCT

Each vial contains 100 μ g IgG₁ kappa light chain in 1.0 ml of PBS with < 0.1% sodium azide and 0.1% gelatin.

STORAGE

Store at 4° C, ****DO NOT FREEZE****. Stable for one year from the date of shipment. Non-hazardous. No MSDS required.

PROTOCOLS

See our web site at www.scbt.com for detailed protocols and support products.

APPLICATIONS

PAI-RBP1 (1B9) is recommended for detection of PAI-RBP1 of mouse, rat and human origin by Western Blotting (starting dilution 1:200, dilution range 1:100-1:1000), immunoprecipitation [1-2 μ g per 100-500 μ g of total protein (1 ml of cell lysate)], immunofluorescence (starting dilution 1:50, dilution range 1:50-1:500) and solid phase ELISA (starting dilution 1:30, dilution range 1:30-1:3000).

Suitable for use as control antibody for PAI-RBP1 siRNA (h): sc-88846, PAI-RBP1 siRNA (m): sc-151994, PAI-RBP1 shRNA Plasmid (h): sc-88846-SH, PAI-RBP1 shRNA Plasmid (m): sc-151994-SH, PAI-RBP1 shRNA (h) Lentiviral Particles: sc-88846-V and PAI-RBP1 shRNA (m) Lentiviral Particles: sc-151994-V.

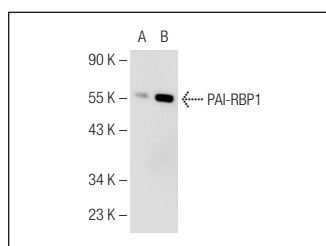
Molecular Weight of PAI-RBP1: 60 kDa.

Positive Controls: PAI-RBP1 (h4): 293 Lysate: sc-177693, HeLa whole cell lysate: sc-2200 or Hep G2 cell lysate: sc-2227.

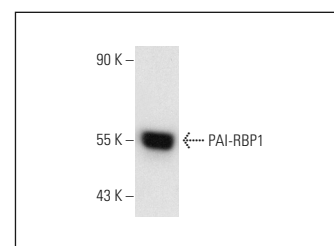
RECOMMENDED SUPPORT REAGENTS

To ensure optimal results, the following support reagents are recommended: 1) Western Blotting: use m-IgG κ BP-HRP: sc-516102 or m-IgG κ BP-HRP (Cruz Marker): sc-516102-CM (dilution range: 1:1000-1:10000), Cruz Marker™ Molecular Weight Standards: sc-2035, UltraCruz® Blocking Reagent: sc-516214 and Western Blotting Luminol Reagent: sc-2048. 2) Immunoprecipitation: use Protein A/G PLUS-Agarose: sc-2003 (0.5 ml agarose/2.0 ml). 3) Immunofluorescence: use m-IgG κ BP-FITC: sc-516140 or m-IgG κ BP-PE: sc-516141 (dilution range: 1:50-1:200) with UltraCruz® Mounting Medium: sc-24941 or UltraCruz® Hard-set Mounting Medium: sc-359850.

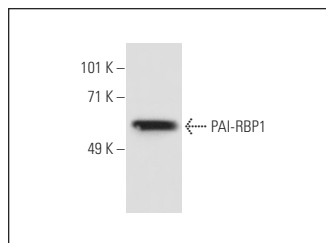
DATA



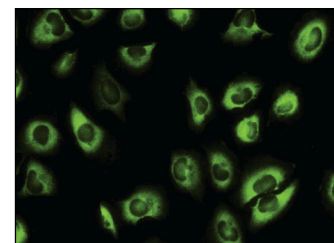
PAI-RBP1 (1B9): sc-100800. Western blot analysis of PAI-RBP1 expression in non-transfected: sc-110760 (A) and human PAI-RBP1 transfected: sc-177693 (B) 293 whole cell lysates.



PAI-RBP1 (1B9): sc-100800. Western blot analysis of PAI-RBP1 expression in HeLa whole cell lysate.



PAI-RBP1 (1B9): sc-100800. Western blot analysis of PAI-RBP1 expression in Hep G2 whole cell lysate.



PAI-RBP1 (1B9): sc-100800. Immunofluorescence staining of paraformaldehyde-fixed HeLa cells showing cytoplasmic localization.

SELECT PRODUCT CITATIONS

- DeBoer, J., et al. 2014. Alterations in the nuclear proteome of HIV-1 infected T-cells. *Virology* 468-470: 409-420.

RESEARCH USE

For research use only, not for use in diagnostic procedures.