

KIF26A (YY-N): sc-100949

BACKGROUND

The kinesins constitute a large family of microtubule-dependent motor proteins, which are responsible for the distribution of numerous organelles, vesicles and macromolecular complexes throughout the cell. Individual kinesin members play crucial roles in cell division, intracellular transport and membrane trafficking events including endocytosis and transcytosis. KIF26A (kinesin family member 26A) is a 1,882 amino acid protein that contains one N-terminal kinesin-motor domain and belongs to the kinesin-like protein family. The kinesin-motor domain is responsible for the ATP-dependent movement of KIF26A across microtubules.

REFERENCES

1. Vallee, R.B. and Shpetner, H.S. 1990. Motor proteins of cytoplasmic microtubules. *Annu. Rev. Biochem.* 59: 909-932.
2. Endow, S.A. 1991. The emerging kinesin family of microtubule motor proteins. *Trends Biochem. Sci.* 16: 221-225.
3. Brady, S.T. 1995. A kinesin medley: biochemical and functional heterogeneity. *Trends Cell Biol.* 5: 159-164.
4. Hamm-Alvarez, S.F. 1998. Molecular motors and their role in membrane traffic. *Adv. Drug Deliv. Rev.* 29: 229-242.
5. Miki, H., Setou, M., Kaneshiro, K. and Hirokawa, N. 2001. All kinesin superfamily protein, KIF, genes in mouse and human. *Proc. Natl. Acad. Sci. USA* 98: 7004-7011.
6. Sarli, V. and Giannis, A. 2006. Inhibitors of mitotic kinesins: next-generation antimetotics. *Chem. Med. Chem.* 1: 293-298.

CHROMOSOMAL LOCATION

Genetic locus: KIF26A (human) mapping to 14q32.33.

SOURCE

KIF26A (YY-N) is a mouse monoclonal antibody raised against recombinant KIF26A of human origin.

PRODUCT

Each vial contains 100 µg IgG₁ kappa light chain in 1.05 ml of PBS with < 0.1% sodium azide and 0.1% gelatin.

APPLICATIONS

KIF26A (YY-N) is recommended for detection of KIF26A of human origin by Western Blotting (starting dilution 1:200, dilution range 1:100-1:1000), immunoprecipitation [1-2 µg per 100-500 µg of total protein (1 ml of cell lysate)] and solid phase ELISA (starting dilution 1:30, dilution range 1:30-1:3000).

Suitable for use as control antibody for KIF26A siRNA (h): sc-92456, KIF26A shRNA Plasmid (h): sc-92456-SH and KIF26A shRNA (h) Lentiviral Particles: sc-92456-V.

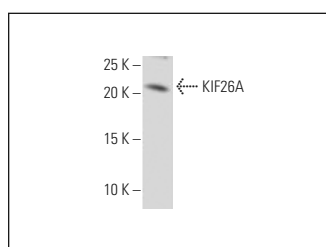
Molecular Weight of KIF26A: 195 kDa.

Positive Controls: HeLa whole cell lysate: sc-2200.

RECOMMENDED SUPPORT REAGENTS

To ensure optimal results, the following support reagents are recommended: 1) Western Blotting: use m-IgGκ BP-HRP: sc-516102 or m-IgGκ BP-HRP (Cruz Marker): sc-516102-CM (dilution range: 1:1000-1:10000), Cruz Marker™ Molecular Weight Standards: sc-2035, UltraCruz® Blocking Reagent: sc-516214 and Western Blotting Luminol Reagent: sc-2048. 2) Immunoprecipitation: use Protein A/G PLUS-Agarose: sc-2003 (0.5 ml agarose/2.0 ml).

DATA



KIF26A (YY-N): sc-100949. Western blot analysis of KIF26A expression in HeLa whole cell lysate.

STORAGE

Store at 4° C, ****DO NOT FREEZE****. Stable for one year from the date of shipment. Non-hazardous. No MSDS required.

RESEARCH USE

For research use only, not for use in diagnostic procedures.

PROTOCOLS

See our web site at www.scbt.com for detailed protocols and support products.