

JRKL (73-Q): sc-100971

BACKGROUND

The tigger transposable element derived (TIGD) protein family (whose members include TIGD1, TIGD2, TIGD3, TIGD4, TIGD5, TIGD6, TIGD7, JRKL and JRK) is a subfamily of the DNA-mediated transposons superfamily. While the exact function of tigger subfamily proteins is unknown, all tigger subfamily proteins contain a DDE domain and an HTH CENPB-type DNA-binding domain, indicating a possible DNA-binding function. JRKL is a 442 amino acid protein with a predicted nuclear localization. JRKL is abundantly expressed in most tissues, with less expression in liver, lung and peripheral blood leukocytes. With 35% homology to mouse JRK protein which causes epileptic seizures in mice when inactivated, JRKL may be biologically significant in the development of epilepsy.

REFERENCES

- Toth, M., Grimsby, J., Buzsaki, G. and Donovan, G.P. 1995. Epileptic seizures caused by inactivation of a novel gene, jerky, related to centromere binding protein-B in transgenic mice. *Nat. Genet.* 11: 71-75.
- Zeng, Z., Kyaw, H., Gakenheimer, K.R., Augustus, M., Fan, P., Zhang, X., Su, K., Carter, K.C. and Li, Y. 1997. Cloning, mapping, and tissue distribution of a human homologue of the mouse jerky gene product. *Biochem. Biophys. Res. Commun.* 236: 389-395.
- Morita, R., Miyazaki, E., Fong, C.Y., Chen, X.N., Korenberg, J.R., Delgado-Escueta, A.V. and Yamakawa, K. 1998. JH8, a gene highly homologous to the mouse jerky gene, maps to the region for childhood absence epilepsy on 8q24. *Biochem. Biophys. Res. Commun.* 248: 307-314.
- Morita, R., Miyazaki, E., Shah, P.U., Castroviejo, I.P., Delgado-Escueta, A.V. and Yamakawa, K. 1999. Exclusion of the JRK/JH8 gene as a candidate for human childhood absence epilepsy mapped on 8q24. *Epilepsy Res.* 37: 151-158.
- Moore, T., Hecquet, S., McLellann, A., Ville, D., Grid, D., Picard, F., Moulard, B., Asherson, P., Makoff, A.J., McCormick, D., Nashef, L., Froguel, P., Arzimanoglou, A., LeGuern, E. and Baillet, B. 2001. Polymorphism analysis of JRK/JH8, the human homologue of mouse jerky, and description of a rare mutation in a case of CAE evolving to JME. *Epilepsy Res.* 46: 157-167.
- Online Mendelian Inheritance in Man, OMIM™. 2002. Johns Hopkins University, Baltimore, MD. MIM Number: 603211. World Wide Web URL: <http://www.ncbi.nlm.nih.gov/om>

CHROMOSOMAL LOCATION

Genetic locus: JRKL (human) mapping to 11q21; Jrkl (mouse) mapping to 9 A1.

SOURCE

JRKL (73-Q) is a mouse monoclonal antibody raised against recombinant JRKL of human origin.

PRODUCT

Each vial contains 50 µg IgG₁ kappa light chain in 0.5 ml of PBS with < 0.1% sodium azide and 0.1% gelatin.

APPLICATIONS

JRKL (73-Q) is recommended for detection of JRKL of mouse, rat and human origin by Western Blotting (starting dilution to be determined by researcher, dilution range 1:100-1:5000), immunoprecipitation [1-2 µg per 100-500 µg of total protein (1 ml of cell lysate)] and solid phase ELISA (starting dilution to be determined by researcher, dilution range 1:100-1:5000).

Suitable for use as control antibody for JRKL siRNA (h): sc-96749, JRKL shRNA Plasmid (h): sc-96749-SH and JRKL shRNA (h) Lentiviral Particles: sc-96749-V.

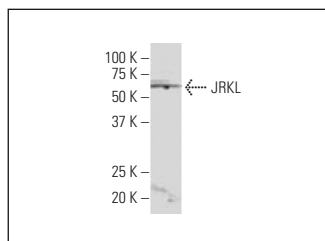
Molecular Weight of JRKL: 51 kDa.

Positive Controls: K-562 whole cell lysate: sc-2203.

RECOMMENDED SUPPORT REAGENTS

To ensure optimal results, the following support reagents are recommended: 1) Western Blotting: use m-IgGκ BP-HRP: sc-516102 or m-IgGκ BP-HRP (Cruz Marker): sc-516102-CM (dilution range: 1:1000-1:10000), Cruz Marker™ Molecular Weight Standards: sc-2035, UltraCruz® Blocking Reagent: sc-516214 and Western Blotting Luminol Reagent: sc-2048. 2) Immunoprecipitation: use Protein A/G PLUS-Agarose: sc-2003 (0.5 ml agarose/2.0 ml).

DATA



JRKL (73-Q): sc-100971. Western blot analysis of JRKL expression in K-562 whole cell lysate.

STORAGE

Store at 4° C, **DO NOT FREEZE**. Stable for one year from the date of shipment. Non-hazardous. No MSDS required.

RESEARCH USE

For research use only, not for use in diagnostic procedures.

PROTOCOLS

See our web site at www.scbt.com for detailed protocols and support products.