

GOLPH4 (XY-2): sc-101054

BACKGROUND

The Golgi apparatus is an organelle that plays an essential role in the modification and sorting of proteins that are exported from the endoplasmic reticulum (ER). GOLPH4, also known as GOLIM4 (Golgi integral membrane protein 4), GIMPC, GPP130 or P138, is a 696 amino acid single-pass type II membrane protein that localizes to the Golgi stack membrane and the *cis* and medial Golgi cisternae. One of many Golgi-resident proteins, GOLPH4 mediates protein trafficking along the late endosome-bypass pathway, thereby regulating protein transport from the early endosome to the Golgi. GOLPH4 has a large C-terminal luminal domain with potential N- and O-glycosylation sites, as well as a short N-terminal tail with a phosphorylation and myristoylation site.

REFERENCES

- Linstedt, A.D., Mehta, A., Suhan, J., Reggio, H. and Hauri, H.P. 1997. Sequence and overexpression of GPP130/GIMPC: evidence for saturable pH-sensitive targeting of a type II early Golgi membrane protein. *Mol. Biol. Cell* 8: 1073-1087.
- Bachert, C., Lee, T.H. and Linstedt, A.D. 2001. Luminal endosomal and Golgi-retrieval determinants involved in pH-sensitive targeting of an early Golgi protein. *Mol. Biol. Cell* 12: 3152-3160.
- Doi, K., Noma, S., Yamao, F., Goko, H. and Yagura, T. 2002. Expression of Golgi membrane protein p138 is cell cycle-independent and dissociated from centrosome duplication. *Cell Struct. Funct.* 27: 117-125.
- Online Mendelian Inheritance in Man, OMIM™. 2002. Johns Hopkins University, Baltimore, MD. MIM Number: 606805. World Wide Web URL: <http://www.ncbi.nlm.nih.gov/omim/>
- Oka, T., Ungar, D., Hughson, F.M. and Krieger, M. 2004. The COG and COPI complexes interact to control the abundance of GEARs, a subset of Golgi integral membrane proteins. *Mol. Biol. Cell* 15: 2423-2435.
- Natarajan, R. and Linstedt, A.D. 2004. A cycling *cis*-Golgi protein mediates endosome-to-Golgi traffic. *Mol. Biol. Cell* 15: 4798-4806.
- Starr, T., Forsten-Williams, K. and Storrie, B. 2007. Both post-Golgi and intra-Golgi cycling affect the distribution of the Golgi phosphoprotein GPP130. *Traffic* 8: 1265-1279.

CHROMOSOMAL LOCATION

Genetic locus: GOLIM4 (human) mapping to 3q26.2.

SOURCE

GOLPH4 (XY-2) is a mouse monoclonal antibody raised against recombinant GOLPH4 of human origin.

PRODUCT

Each vial contains 100 µg IgG_{2a} kappa light chain in 1.0 ml of PBS with < 0.1% sodium azide and 0.1% gelatin.

STORAGE

Store at 4° C, ****DO NOT FREEZE****. Stable for one year from the date of shipment. Non-hazardous. No MSDS required.

APPLICATIONS

GOLPH4 (XY-2) is recommended for detection of GOLPH4 of human origin by Western Blotting (starting dilution 1:200, dilution range 1:100-1:1000), immunoprecipitation [1-2 µg per 100-500 µg of total protein (1 ml of cell lysate)], immunofluorescence (starting dilution 1:50, dilution range 1:50-1:500) and solid phase ELISA (starting dilution 1:30, dilution range 1:30-1:3000).

Suitable for use as control antibody for GOLPH4 siRNA (h): sc-62393, GOLPH4 shRNA Plasmid (h): sc-62393-SH and GOLPH4 shRNA (h) Lentiviral Particles: sc-62393-V.

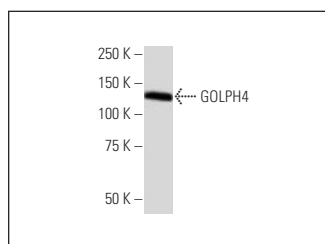
Molecular Weight of GOLPH4: 130 kDa.

Positive Controls: HeLa whole cell lysate: sc-2200.

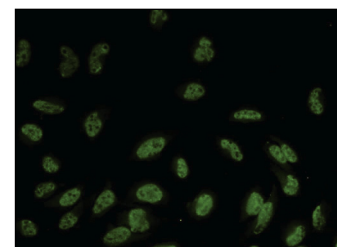
RECOMMENDED SUPPORT REAGENTS

To ensure optimal results, the following support reagents are recommended: 1) Western Blotting: use m-IgGκ BP-HRP: sc-516102 or m-IgGκ BP-HRP (Cruz Marker): sc-516102-CM (dilution range: 1:1000-1:10000), Cruz Marker™ Molecular Weight Standards: sc-2035, UltraCruz® Blocking Reagent: sc-516214 and Western Blotting Luminol Reagent: sc-2048. 2) Immunoprecipitation: use Protein A/G PLUS-Agarose: sc-2003 (0.5 ml agarose/2.0 ml). 3) Immunofluorescence: use m-IgGκ BP-FITC: sc-516140 or m-IgGκ BP-PE: sc-516141 (dilution range: 1:50-1:200) with UltraCruz® Mounting Medium: sc-24941 or UltraCruz® Hard-set Mounting Medium: sc-359850.

DATA



GOLPH4 (XY-2): sc-101054. Western blot analysis of GOLPH4 expression in HeLa whole cell lysate.



GOLPH4 (XY-2): sc-101054. Immunofluorescence staining of paraformaldehyde-fixed HeLa cells showing nuclear localization.

RESEARCH USE

For research use only, not for use in diagnostic procedures.

PROTOCOLS

See our web site at www.scbt.com for detailed protocols and support products.