

PHF1 (SK-J6): sc-101107

BACKGROUND

PHF1 (PHD protein finger 1), also known as polycomb-like protein 1 or hPC11, is a 567 amino acid member of the PHD finger protein family. Members of the PHD finger protein family function as transcriptional regulators that affect gene expression by modulating chromatin structure. With a subcellular localization to the nucleus, PHF1 is widely expressed in tissues, with high expression in pancreas, heart and skeletal muscle and low expression in liver, lung, kidney, brain and placenta. PHF1 contains two PHD-type zinc finger domains, which may contribute to the transcriptional activity of PHF1. PHF1 is thought to interact with ENX-1, a component of PRC2 (polycomb repressive complex 2), increasing the gene silencing activity of PRC2. PHF1 exists as two isoforms produced by alternative splicing.

REFERENCES

1. Coulson, M., Robert, S., Eyre, H.J. and Saint, R. 1998. The identification and localization of a human gene with sequence similarity to polycomb-like of *Drosophila melanogaster*. *Genomics* 48: 381-383.
2. O'Connell, S., Wang, L., Robert, S., Jones, C.A., Saint, R. and Jones, R.S. 2001. Polycomb-like PHD fingers mediate conserved interaction with enhancer of zeste protein. *J. Biol. Chem.* 276: 43065-43073.
3. Online Mendelian Inheritance in Man, OMIM™. 2002. Johns Hopkins University, Baltimore, MD. MIM Number: 602881. World Wide Web URL: <http://www.ncbi.nlm.nih.gov/omim/>
4. Villa, R., Pasini, D., Gutierrez, A., Morey, L., Occhionorelli, M., Viré, E., Nomdedeu, J.F., Jenuwein, T., Pelicci, P.G., Minucci, S., Fuks, F., Helin, K. and Di Croce, L. 2007. Role of the polycomb repressive complex 2 in acute promyelocytic leukemia. *Cancer Cell* 11: 513-525.
5. Cao, R., Wang, H., He, J., Erdjument-Bromage, H., Tempst, P. and Zhang, Y. 2008. Role of hPHF1 in H3K27 methylation and Hox gene silencing. *Mol. Cell. Biol.* 28: 1862-1872.
6. Sarma, K., Margueron, R., Ivanov, A., Pirrotta, V. and Reinberg, D. 2008. Ezh2 requires PHF1 to efficiently catalyze H3 lysine 27 trimethylation *in vivo*. *Mol. Cell. Biol.* 28: 2718-2731.
7. Hong, Z., Jiang, J., Lan, L., Nakajima, S., Kanno, S.I., Koseki, H. and Yasui, A. 2008. A polycomb group protein, PHF1, is involved in the response to DNA double-strand breaks in human cell. *Nucleic Acids Res.* 36: 2939-2947.

CHROMOSOMAL LOCATION

Genetic locus: PHF1 (human) mapping to 6p21.32.

SOURCE

PHF1 (SK-J6) is a mouse monoclonal antibody raised against recombinant PHF1 of human origin.

PRODUCT

Each vial contains 100 µg IgG₁ kappa light chain in 1.0 ml of PBS with < 0.1% sodium azide and 0.1% gelatin.

APPLICATIONS

PHF1 (SK-J6) is recommended for detection of PHD finger protein 1 of human origin by Western Blotting (starting dilution to be determined by researcher, dilution range 1:100-1:5000), immunoprecipitation [1-2 µl per 100-500 µg of total protein (1 ml of cell lysate)] and solid phase ELISA (starting dilution to be determined by researcher, dilution range 1:100-1:5000).

Suitable for use as control antibody for PHF1 siRNA (h): sc-95264, PHF1 shRNA Plasmid (h): sc-95264-SH and PHF1 shRNA (h) Lentiviral Particles: sc-95264-V.

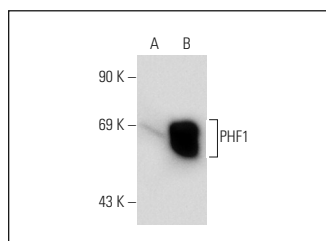
Molecular Weight of PHF1: 62 kDa.

Positive Controls: PHF1 (h): 293T Lysate: sc-171702 or A-431 whole cell lysate: sc-2201.

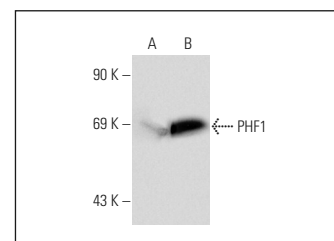
RECOMMENDED SUPPORT REAGENTS

To ensure optimal results, the following support reagents are recommended: 1) Western Blotting: use m-IgGκ BP-HRP: sc-516102 or m-IgGκ BP-HRP (Cruz Marker): sc-516102-CM (dilution range: 1:1000-1:10000), Cruz Marker™ Molecular Weight Standards: sc-2035, TBS Blotto A Blocking Reagent: sc-2333 and Western Blotting Luminol Reagent: sc-2048. 2) Immunoprecipitation: use Protein A/G PLUS-Agarose: sc-2003 (0.5 ml agarose/2.0 ml).

DATA



PHF1 (SK-J6): sc-101107. Western blot analysis of PHF1 expression in non-transfected: sc-117752 (A) and human PHF1 transfected: sc-171702 (B) 293T whole cell lysates.



PHF1 (SK-J6): sc-101107. Western blot analysis of PHF1 expression in non-transfected: sc-117752 (A) and human PHF1 transfected: sc-171860 (B) 293T whole cell lysates.

STORAGE

Store at 4° C, **DO NOT FREEZE**. Stable for one year from the date of shipment. Non-hazardous. No MSDS required.

RESEARCH USE

For research use only, not for use in diagnostic procedures.

PROTOCOLS

See our web site at www.scbt.com for detailed protocols and support products.