

Pinin (4FQ): sc-101127

BACKGROUND

Pinin is a desmosomal associated protein involved with the maintenance of cell to cell adhesion of the epithelium. Pinin is a widespread protein and has been shown to play an important role in cell adhesion through its interaction with nuclear complexes. Pinin is also involved in pre-mRNA splicing through its interactions with a C-terminal RS domain of Cyclophilin G, a MOCA-type nuclear cyclophilin. Pinin becomes nuclear during the early stages of embryonic development and remains so throughout the entire period. Defects or lack of Pinin can be lethal at perinatal stages and causes defects in the cardiac outflow tract, axial skeleton, palate and dorsal dermis.

REFERENCES

- Ouyang, P. and Sugrue, S.P. 1996. Characterization of Pinin, a novel protein associated with the desmosome-intermediate filament complex. *J. Cell Biol.* 135: 1027-1042.
- Brandner, J.M., Reidenbach, S. and Franke, W.W. 1997. Evidence that "Pinin", reportedly a differentiation-specific desmosomal protein, is actually a widespread nuclear protein. *Differentiation* 62: 119-127.
- Ouyang, P. 1999. Antibodies differentiate desmosome-form and nucleus-form Pinin: evidence that Pinin is a moonlighting protein with dual location at the desmosome and within the nucleus. *Biochem. Biophys. Res. Commun.* 263: 192-200.
- Shi, Y., Tabesh, M. and Sugrue, S.P. 2000. Role of cell adhesion-associated protein, Pinin (DRS/memA), in corneal epithelial migration. *Invest. Ophthalmol. Vis. Sci.* 41: 1337-1345.
- Shi, Y., Ouyang, P. and Sugrue, S.P. 2000. Characterization of the gene encoding Pinin/DRS/memA and evidence for its potential tumor suppressor function. *Oncogene* 19: 289-297.
- Joo, J.H., Alpatov, R., Munguba, G.C., Jackson, M.R., Hunt, M.E. and Sugrue, S.P. 2005. Reduction of Pnn by RNAi induces loss of cell-cell adhesion between human corneal epithelial cells. *Mol. Vis.* 11: 133-142.
- Leu, S. and Ouyang, P. 2006. Spatial and temporal expression profile of Pinin during mouse development. *Gene Expr. Patterns* 6: 620-631.
- Joo, J.H., Lee, Y.J., Munguba, G.C., Park, S., Taxter, T.J., Elsagga, M.Y., Jackson, M.R., Oh, S.P. and Sugrue, S.P. 2007. Role of Pinin in neural crest, dorsal dermis, and axial skeleton development and its involvement in the regulation of Tcf/Lef activity in mice. *Dev. Dyn.* 236: 2147-2158.
- Rennel, E., Mellberg, S., Dimberg, A., Petersson, L., Botling, J., Ameer, A., Westholm, J.O., Komorowski, J., Lassalle, P., Cross, M.J. and Gerwins, P. 2007. Endocan is a VEGF-A and PI3K regulated gene with increased expression in human renal cancer. *Exp. Cell Res.* 313: 1285-1294.

CHROMOSOMAL LOCATION

Genetic locus: PNN (human) mapping to 14q21.1; Pnn (mouse) mapping to 12 C1.

SOURCE

Pinin (4FQ) is a mouse monoclonal antibody raised against recombinant Pinin of human origin.

PRODUCT

Each vial contains 100 µg IgG_{2a} kappa light chain in 1.0 ml of PBS with < 0.1% sodium azide and 0.1% gelatin.

APPLICATIONS

Pinin (4FQ) is recommended for detection of Pinin of mouse, rat and human origin by Western Blotting (starting dilution 1:200, dilution range 1:100-1:1000), immunoprecipitation [1-2 µg per 100-500 µg of total protein (1 ml of cell lysate)] and solid phase ELISA (starting dilution 1:30, dilution range 1:30-1:3000).

Suitable for use as control antibody for Pinin siRNA (h): sc-76142, Pinin siRNA (m): sc-76143, Pinin shRNA Plasmid (h): sc-76142-SH, Pinin shRNA Plasmid (m): sc-76143-SH, Pinin shRNA (h) Lentiviral Particles: sc-76142-V and Pinin shRNA (m) Lentiviral Particles: sc-76143-V.

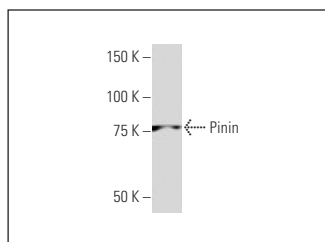
Molecular Weight of Pinin: 140 kDa.

Positive Controls: PC-12 cell lysate: sc-2250.

RECOMMENDED SUPPORT REAGENTS

To ensure optimal results, the following support reagents are recommended: 1) Western Blotting: use m-IgGκ BP-HRP: sc-516102 or m-IgGκ BP-HRP (Cruz Marker): sc-516102-CM (dilution range: 1:1000-1:10000), Cruz Marker™ Molecular Weight Standards: sc-2035, UltraCruz® Blocking Reagent: sc-516214 and Western Blotting Luminol Reagent: sc-2048. 2) Immunoprecipitation: use Protein A/G PLUS-Agarose: sc-2003 (0.5 ml agarose/2.0 ml).

DATA



Pinin (4FQ): sc-101127. Western blot analysis of Pinin expression in PC-12 whole cell lysate.

STORAGE

Store at 4° C, **DO NOT FREEZE**. Stable for one year from the date of shipment. Non-hazardous. No MSDS required.

RESEARCH USE

For research use only, not for use in diagnostic procedures.

PROTOCOLS

See our web site at www.scbt.com for detailed protocols and support products.