

TCF-19 (F-27): sc-101169

BACKGROUND

TCF-19 (transcription factor 19), also known as SC1 or SC1-1, is a 345 amino acid protein that contains one FHA domain, a proline-rich domain and one PHD-type zinc finger. Localizing to the nucleus, TCF-19 is a growth regulated protein that is believed to function as a trans-activating factor with a role in the transcription of genes involved in the late stages of cell cycle progression (G₁ to S transition or entry of cells into G₂ and mitosis). TCF-19 is expressed preferentially in the G₁/S phase of the cell cycle. The gene encoding TCF-19 localizes to a critical region on chromosome 6 that has been associated with psoriasis vulgaris, a disorder of the skin that is characterized by hyperproliferation of epidermal cells. This suggests that TCF-19, via its regulation of late cell cycle-specific genes, may play a role in the development of this disorder.

REFERENCES

1. Ku, D.H., et al. 1991. A new growth-regulated complementary DNA with the sequence of a putative *trans*-activating factor. *Cell Growth Differ.* 2: 179-186.
2. Krishnan, B.R., et al. 1995. Feature mapping of the HLA class I region: localization of the POU5F1 and TCF-19 genes. *Genomics* 30: 53-58.
3. Goldsworthy, M., et al. 1997. Identification of new HLA class I region genes by sample sequencing. *Immunogenetics* 46: 206-212.
4. Oka, A., et al. 1999. Association analysis using refined microsatellite markers localizes a susceptibility locus for psoriasis vulgaris within a 111 kb segment telomeric to the HLA-C gene. *Hum. Mol. Genet.* 8: 2165-2170.
5. Shiina, T., et al. 1999. Genome sequencing analysis of the 1.8 Mb entire human MHC class I region. *Immunol. Rev.* 167: 193-199.
6. Teraoka, Y., et al. 2000. Genetic polymorphisms in the cell growth regulated gene, SC1 telomeric of the HLA-C gene and lack of association of psoriasis vulgaris. *Tissue Antigens* 55: 206-211.
7. Online Mendelian Inheritance in Man, OMIM™. 2002. Johns Hopkins University, Baltimore, MD. MIM Number: 600912. World Wide Web URL: <http://www.ncbi.nlm.nih.gov/omim/>
8. Nair, R.P., et al. 2006. Sequence and haplotype analysis supports HLA-C as the psoriasis susceptibility 1 gene. *Am. J. Hum. Genet.* 78: 827-851.

CHROMOSOMAL LOCATION

Genetic locus: TCF19 (human) mapping to 6p21.33; Tcf19 (mouse) mapping to 17 B1.

SOURCE

TCF-19 (F-27) is a mouse monoclonal antibody raised against recombinant TCF-19 of human origin.

PRODUCT

Each vial contains 100 µg IgG₁ kappa light chain in 1.0 ml of PBS with < 0.1% sodium azide and 0.1% gelatin.

APPLICATIONS

TCF-19 (F-27) is recommended for detection of TCF-19 of mouse, rat and human origin by Western Blotting (starting dilution 1:200, dilution range 1:100-1:1000), immunoprecipitation [1-2 µg per 100-500 µg of total protein (1 ml of cell lysate)], immunofluorescence (starting dilution 1:50, dilution range 1:50-1:500), immunohistochemistry (including paraffin-embedded sections) (starting dilution 1:50, dilution range 1:50-1:500) and solid phase ELISA (starting dilution 1:30, dilution range 1:30-1:3000).

Suitable for use as control antibody for TCF-19 siRNA (h): sc-63113, TCF-19 siRNA (m): sc-63114, TCF-19 shRNA Plasmid (h): sc-63113-SH, TCF-19 shRNA Plasmid (m): sc-63114-SH, TCF-19 shRNA (h) Lentiviral Particles: sc-63113-V and TCF-19 shRNA (m) Lentiviral Particles: sc-63114-V.

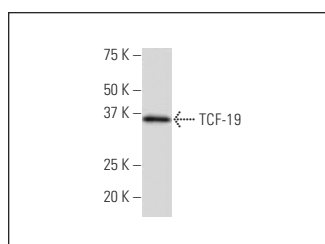
Molecular Weight of TCF-19: 37 kDa.

Positive Controls: HeLa nuclear extract: sc-2120.

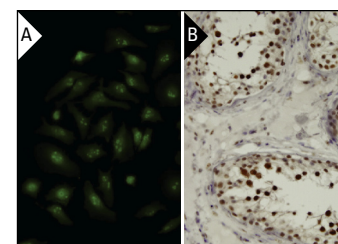
RECOMMENDED SUPPORT REAGENTS

To ensure optimal results, the following support reagents are recommended: 1) Western Blotting: use m-IgGκ BP-HRP: sc-516102 or m-IgGκ BP-HRP (Cruz Marker): sc-516102-CM (dilution range: 1:1000-1:10000), Cruz Marker™ Molecular Weight Standards: sc-2035, UltraCruz® Blocking Reagent: sc-516214 and Western Blotting Luminol Reagent: sc-2048. 2) Immunoprecipitation: use Protein A/G PLUS-Agarose: sc-2003 (0.5 ml agarose/2.0 ml). 3) Immunofluorescence: use m-IgGκ BP-FITC: sc-516140 or m-IgGκ BP-PE: sc-516141 (dilution range: 1:50-1:200) with UltraCruz® Mounting Medium: sc-24941 or UltraCruz® Hard-set Mounting Medium: sc-359850. 4) Immunohistochemistry: use m-IgGκ BP-HRP: sc-516102 with DAB, 50X: sc-24982 and Immunohistomount: sc-45086, or Organo/Limonene Mount: sc-45087.

DATA



TCF-19 (F-27): sc-101169. Western blot analysis of TCF-19 expression in HeLa nuclear extract.



TCF19 (F-27): sc-101169. Immunofluorescence staining of paraformaldehyde-fixed HeLa cells showing nuclear localization (A). Immunoperoxidase staining of formalin-fixed, paraffin-embedded human testis tissue showing nuclear localization (B).

STORAGE

Store at 4° C, **DO NOT FREEZE**. Stable for one year from the date of shipment. Non-hazardous. No MSDS required.

RESEARCH USE

For research use only, not for use in diagnostic procedures.