

HORMAD1 (GG-Y): sc-101235

BACKGROUND

HORMAD1 (HORMA domain containing 1), also known as NOHMA (newborn ovary HORMA protein) or CT46 (cancer/testis antigen 46), is a 394 amino acid testis-specific protein. HORMAD1 contains one HORMA (Hop1p, Rev7p and MAD2) domain (a domain involved in chromatin binding) that makes up the entire full-length sequence of the protein. Proteins with HORMA domains are typically involved in modulating chromatin dynamics and structure. The HORMA domain is believed to act as an adaptor, recruiting other proteins to chromatin states that result from nonattachment to the mitotic spindle or from DNA double-strand breaks. HORMAD1 is a putative meiotic protein, as is suggested by its 25.8% homology with the yeast protein Hop1 (a meiosis-specific protein). In addition, HORMAD1 is overexpressed in a variety of carcinomas, including breast, lung, endometrial, colon, bladder and esophageal cancers.

REFERENCES

1. Online Mendelian Inheritance in Man, OMIM™. 2002. Johns Hopkins University, Baltimore, MD. MIM Number: 609824. World Wide Web URL: <http://www.ncbi.nlm.nih.gov/omim/>
2. Pangas, S.A., Yan, W., Matzuk, M.M. and Rajkovic, A. 2004. Restricted germ cell expression of a gene encoding a novel mammalian HORMA domain-containing protein. *Gene Expr. Patterns* 5: 257-263.
3. Chen, Y.T., Venditti, C.A., Theiler, G., Stevenson, B.J., Iseli, C., Gure, A.O., Jongeneel, C.V., Old, L.J. and Simpson, A.J. 2005. Identification of CT46/HORMAD1, an immunogenic cancer/testis antigen encoding a putative meiosis-related protein. *Cancer Immun.* 5: 9.
4. Aung, P.P., Oue, N., Mitani, Y., Nakayama, H., Yoshida, K., Noguchi, T., Bosserhoff, A.K. and Yasui, W. 2006. Systematic search for gastric cancer-specific genes based on SAGE data: melanoma inhibitory activity and matrix metalloproteinase-10 are novel prognostic factors in patients with gastric cancer. *Oncogene* 25: 2546-2557.
5. Adélaïde, J., Finetti, P., Bekhouche, I., Repellini, L., Geneix, J., Sircoulomb, F., Charafe-Jauffret, E., Cervera, N., Desplans, J., Parzy, D., Schoenmakers, E., Viens, P., Jacquemier, J., Birnbaum, D., Bertucci, F., and Chaffanet, M. 2007. Integrated profiling of basal and luminal breast cancers. *Cancer Res.* 67: 11565-11575.

CHROMOSOMAL LOCATION

Genetic locus: HORMAD1 (human) mapping to 1q21.3.

SOURCE

HORMAD1 (GG-Y) is a mouse monoclonal antibody raised against recombinant HORMAD1 of human origin.

PRODUCT

Each vial contains 100 µg IgG₁ kappa light chain in 1.0 ml of PBS with < 0.1% sodium azide and 0.1% gelatin.

STORAGE

Store at 4° C, ****DO NOT FREEZE****. Stable for one year from the date of shipment. Non-hazardous. No MSDS required.

APPLICATIONS

HORMAD1 (GG-Y) is recommended for detection of HORMAD1 of human origin by Western Blotting (starting dilution 1:200, dilution range 1:100-1:1000), immunoprecipitation [1-2 µg per 100-500 µg of total protein (1 ml of cell lysate)] and solid phase ELISA (starting dilution 1:30, dilution range 1:30-1:3000).

Suitable for use as control antibody for HORMAD1 siRNA (h): sc-75273, HORMAD1 shRNA Plasmid (h): sc-75273-SH and HORMAD1 shRNA (h) Lentiviral Particles: sc-75273-V.

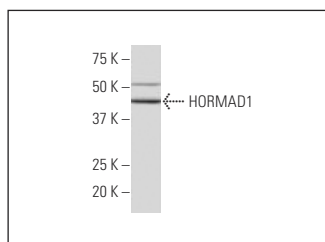
Molecular Weight of HORMAD1: 45 kDa.

Positive Controls: Hep G2 cell lysate: sc-2227.

RECOMMENDED SUPPORT REAGENTS

To ensure optimal results, the following support reagents are recommended: 1) Western Blotting: use m-IgGκ BP-HRP: sc-516102 or m-IgGκ BP-HRP (Cruz Marker): sc-516102-CM (dilution range: 1:1000-1:10000), Cruz Marker™ Molecular Weight Standards: sc-2035, UltraCruz® Blocking Reagent: sc-516214 and Western Blotting Luminol Reagent: sc-2048. 2) Immunoprecipitation: use Protein A/G PLUS-Agarose: sc-2003 (0.5 ml agarose/2.0 ml).

DATA



HORMAD1 (GG-Y): sc-101235. Western blot analysis of HORMAD1 expression in Hep G2 whole cell lysate.

RESEARCH USE

For research use only, not for use in diagnostic procedures.

PROTOCOLS

See our web site at www.scbt.com for detailed protocols and support products.