

LLGL2 (I-13): sc-101242

BACKGROUND

LLGL2 (lethal giant larvae homolog 2), also referred to as HGL or LGL2, is a cortical cytoskeleton protein that is a part of a larger complex of proteins. The complex, which consists of LGN, PKC ι and PAR-6 β , may play a role in ensuring the correct organization and orientation of bipolar spindles for normal cell division and for the initial phase of the establishment of epithelial cell polarity. In *Drosophila melanogaster*, LLGL2 is required in follicle cells for the differentiation of both stalk cells and posterior follicle cells. In humans, LLGL2 may be involved in cell proliferation control and tumorigenesis. Phosphorylation of LLGL2 is induced during cell polarization and may contribute to the segregation of LLGL2 from the PKC ι and PAR-6 β complex. Overexpression of LLGL2 is thought to inhibit tight junction formation in cells. LLGL2 is expressed in the cytoplasm and localizes to the perinuclear structure of the cell.

REFERENCES

- Musch, A., Cohen, D., Yeaman, C., Nelson, W.J., Rodriguez-Boulan, E. and Brennwald, P.J. 2002. Mammalian homolog of *Drosophila* tumor suppressor lethal (2) giant larvae interacts with basolateral exocytic machinery in Madin-Darby canine kidney cells. *Mol. Biol. Cell* 13: 158-168.
- Chalmers, A.D., Pambos, M., Mason, J., Lang, S., Wylie, C. and Papalopulu, N. 2005. aPKC, Crumbs3 and Lgl2 control apicobasal polarity in early vertebrate development. *Development* 132: 977-986.
- Yasumi, M., Sakisaka, T., Hoshino, T., Kimura, T., Sakamoto, Y., Yamanaka, T., Ohno, S. and Takai, Y. 2005. Direct binding of Lgl2 to LGN during mitosis and its requirement for normal cell division. *J. Biol. Chem.* 280: 6761-6765.
- Kallay, L.M., McNickle, A., Brennwald, P.J., Hubbard, A.L. and Braiterman, L.T. 2006. Scribble associates with two polarity proteins, Lgl2 and Vangl2, via distinct molecular domains. *J. Cell. Biochem.* 99: 647-664.
- Kuphal, S., Wallner, S., Schimanski, C.C., Bataille, F., Hofer, P., Strand, S., Strand, D. and Bosserhoff, A.K. 2006. Expression of Hgl-1 is strongly reduced in malignant melanoma. *Oncogene* 25: 103-110.
- Bialucha, C.U., Ferber, E.C., Pichaud, F., Peak-Chew, S.Y. and Fujita, Y. 2007. p32 is a novel mammalian Lgl binding protein that enhances the activity of protein kinase C ζ and regulates cell polarity. *J. Cell Biol.* 178: 575-581.

CHROMOSOMAL LOCATION

Genetic locus: LLGL2 (human) mapping to 17q25.1.

SOURCE

LLGL2 (I-13) is a mouse monoclonal antibody raised against recombinant LLGL2 of human origin.

PRODUCT

Each vial contains 100 μ g IgG_{2a} kappa light chain in 1.0 ml of PBS with < 0.1% sodium azide and 0.1% gelatin.

RESEARCH USE

For research use only, not for use in diagnostic procedures.

APPLICATIONS

LLGL2 (I-13) is recommended for detection of LLGL2 of human origin by Western Blotting (starting dilution 1:200, dilution range 1:100-1:1000), immunoprecipitation [1-2 μ g per 100-500 μ g of total protein (1 ml of cell lysate)], immunofluorescence (starting dilution 1:50, dilution range 1:50-1:500), immunohistochemistry (including paraffin-embedded sections) (starting dilution 1:50, dilution range 1:50-1:500) and solid phase ELISA (starting dilution 1:30, dilution range 1:30-1:3000).

Suitable for use as control antibody for LLGL2 siRNA (h): sc-93661, LLGL2 shRNA Plasmid (h): sc-93661-SH and LLGL2 shRNA (h) Lentiviral Particles: sc-93661-V.

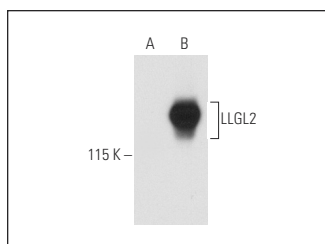
Molecular Weight of LLGL2: 113 kDa.

Positive Controls: LLGL2 (h): 293T Lysate: sc-116924 or HeLa whole cell lysate: sc-2200.

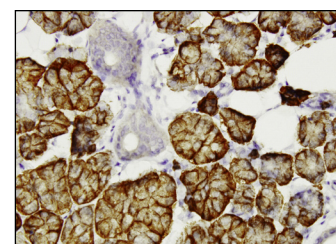
RECOMMENDED SUPPORT REAGENTS

To ensure optimal results, the following support reagents are recommended: 1) Western Blotting: use m-IgG κ BP-HRP: sc-516102 or m-IgG κ BP-HRP (Cruz Marker): sc-516102-CM (dilution range: 1:1000-1:10000), Cruz Marker™ Molecular Weight Standards: sc-2035, UltraCruz® Blocking Reagent: sc-516214 and Western Blotting Luminol Reagent: sc-2048. 2) Immunoprecipitation: use Protein A/G PLUS-Agarose: sc-2003 (0.5 ml agarose/2.0 ml). 3) Immunofluorescence: use m-IgG κ BP-FITC: sc-516140 or m-IgG κ BP-PE: sc-516141 (dilution range: 1:50-1:200) with UltraCruz® Mounting Medium: sc-24941 or UltraCruz® Hard-set Mounting Medium: sc-359850. 4) Immunohistochemistry: use m-IgG κ BP-HRP: sc-516102 with DAB, 50X: sc-24982 and Immunohistomount: sc-45086, or Organo/Limonene Mount: sc-45087.

DATA



LLGL2 (I-13): sc-101242. Western blot analysis of LLGL2 expression in non-transfected: sc-117752 (A) and human LLGL2 transfected: sc-116924 (B) 293T whole cell lysates.



LLGL2 (I-13): sc-101242. Immunoperoxidase staining of formalin-fixed, paraffin-embedded human salivary gland tissue showing membrane and cytoplasmic localization.

STORAGE

Store at 4° C, **DO NOT FREEZE**. Stable for one year from the date of shipment. Non-hazardous. No MSDS required.

PROTOCOLS

See our web site at www.scbt.com for detailed protocols and support products.