

## apoL3 (L07): sc-101262

### BACKGROUND

Apolipoproteins are protein components of plasma lipoproteins. The apolipoprotein L gene family encodes six highly homologous proteins designated apoL1-6, which are associated with large high density type lipoproteins (HDL). The human apoL family maps to chromosome 22q12.3 within a 127,000 bp region. apoL2 and apoL3 may allow the binding of lipids to organelles or may be involved in the movement of lipids in the cytoplasm. apoL2 localizes to the cytoplasm and is widely expressed, with the highest levels observed in the lung, thymus, pancreas, placenta, adult brain and prostate. The apoL2 protein is also detected in the spleen, liver, kidney, colon, small intestine, uterus, spinal cord, adrenal gland, salivary gland, trachea, mammary gland, skeletal muscle, testis and fetal brain and liver. apoL3 also localizes to the cytoplasm and is widely expressed, with highest levels detected in the prostate, lung and placenta. It is also detected in kidney, bone marrow, spleen, thymus, spinal cord, adrenal gland, salivary gland, trachea and mammary gland. Lower levels of apoL3 are observed in the brain, heart, fetal liver, pancreas and testis.

### REFERENCES

1. Horrevoets, A.J., Fontijn, R.D., van Zonneveld, A.J., de Vries, C.J., ten Cate, J.W. and Pannekoek, H. 1999. Vascular endothelial genes that are responsive to tumor necrosis factor  $\alpha$  *in vitro* are expressed in atherosclerotic lesions, including inhibitor of apoptosis protein-1, Stannin, and two novel genes. *Blood* 93: 3418-3431.
2. Duchateau, P.N., Pullinger, C.R., Cho, M.H., Eng, C. and Kane, J.P. 2001. Apolipoprotein L gene family: tissue-specific expression, splicing, promoter regions; discovery of a new gene. *J. Lipid Res.* 42: 620-630.
3. Page, N.M., Butlin, D.J., Lomthaisong, K. and Lowry, P.J. 2001. The human apolipoprotein L gene cluster: identification, classification, and sites of distribution. *Genomics* 74: 71-78.
4. Collins, J.E., Wright, C.L., Edwards, C.A., Davis, M.P., Grinham, J.A., Cole, C.G., Goward, M.E., Aguado, B., Mallya, M., Mokrab, Y., Huckle, E.J., Beare, D.M. and Dunham, I. 2004. A genome annotation-driven approach to cloning the human ORFeome. *Genome Biol.* 5: R84.
5. Panáková, D., Sprong, H., Marois, E., Thiele, C. and Eaton, S. 2005. Lipoprotein particles are required for hedgehog and Wingless signalling. *Nature* 435: 58-65.

### CHROMOSOMAL LOCATION

Genetic locus: APOL3 (human) mapping to 22q12.3.

### SOURCE

apoL3 (L07) is a mouse monoclonal antibody raised against recombinant apoL3 of human origin.

### PRODUCT

Each vial contains 100  $\mu$ g IgG<sub>2a</sub> kappa light chain in 1.0 ml of PBS with < 0.1% sodium azide and 0.1% gelatin.

### RESEARCH USE

For research use only, not for use in diagnostic procedures.

### APPLICATIONS

apoL3 (L07) is recommended for detection of apoL3 of human origin by Western Blotting (starting dilution 1:200, dilution range 1:100-1:1000), immunoprecipitation [1-2  $\mu$ g per 100-500  $\mu$ g of total protein (1 ml of cell lysate)] and solid phase ELISA (starting dilution 1:30, dilution range 1:30-1:3000).

Suitable for use as control antibody for apoL3 siRNA (h): sc-60193, apoL3 shRNA Plasmid (h): sc-60193-SH and apoL3 shRNA (h) Lentiviral Particles: sc-60193-V.

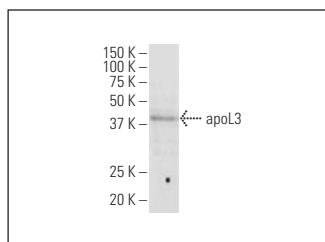
Molecular Weight of apoL3: 44 kDa.

Positive Controls: Jurkat whole cell lysate: sc-2204.

### RECOMMENDED SUPPORT REAGENTS

To ensure optimal results, the following support reagents are recommended: 1) Western Blotting: use m-IgG $\kappa$  BP-HRP: sc-516102 or m-IgG $\kappa$  BP-HRP (Cruz Marker): sc-516102-CM (dilution range: 1:1000-1:10000), Cruz Marker<sup>™</sup> Molecular Weight Standards: sc-2035, UltraCruz<sup>®</sup> Blocking Reagent: sc-516214 and Western Blotting Luminol Reagent: sc-2048. 2) Immunoprecipitation: use Protein A/G PLUS-Agarose: sc-2003 (0.5 ml agarose/2.0 ml).

### DATA



apoL3 (L07): sc-101262. Western blot analysis of apoL3 expression in Jurkat whole cell lysate.

### STORAGE

Store at 4° C, **\*\*DO NOT FREEZE\*\***. Stable for one year from the date of shipment. Non-hazardous. No MSDS required.

### PROTOCOLS

See our web site at [www.scbt.com](http://www.scbt.com) for detailed protocols and support products.