

Sec24D (34.1): sc-101268

BACKGROUND

Sec24D (Sec24-related protein D) is ubiquitously expressed but exhibits predominant expression in heart, placenta, liver and pancreas. Sec24D belongs to the Sec24 subfamily of the Sec23/Sec24 family of proteins. Members of this family participate in vesicle trafficking from the endoplasmic reticulum (ER) to the Golgi apparatus. Sec24D is one of four mammalian proteins, namely Sec24A, Sec24B, Sec24C and Sec24D, that are highly related to the *Saccharomyces cerevisiae* protein Sec24, a component of the coat protein complex COPII that mediates the selective export of membrane proteins from the ER. Similar to its yeast counterpart, Sec24D functions as a component of the cytoplasmic COPII complex. The COPII complex acts as a coat, covering ER-derived transport vesicles and promoting the transport of secretory proteins to the Golgi apparatus. Sec24D shares 50% amino acid identity with the ubiquitously expressed Sec24C protein.

REFERENCES

- Nagase, T., Ishikawa, K., Suyama, M., Kikuno, R., Miyajima, N., Tanaka, A., Kotani, H., Nomura, N. and Ohara, O. 1998. Prediction of the coding sequences of unidentified human genes. XI. The complete sequences of 100 new cDNA clones from brain which code for large proteins *in vitro*. DNA Res. 5: 277-286.
- Tang, B.L., Kausalya, J., Low, D.Y., Lock, M.L. and Hong, W. 1999. A family of mammalian proteins homologous to yeast Sec24p. Biochem. Biophys. Res. Commun. 258: 679-684.
- Online Mendelian Inheritance in Man, OMIM™. 2002. Johns Hopkins University, Baltimore, MD. MIM Number: 607186. World Wide Web URL: <http://www.ncbi.nlm.nih.gov/omim/>
- Farhan, H., Korkhov, V.M., Paulitschke, V., Dorostkar, M.M., Scholze, P., Kudlacek, O., Freissmuth, M. and Sitte, H.H. 2004. Two discontinuous segments in the carboxyl-terminus are required for membrane targeting of the rat γ -aminobutyric acid transporter-1 (GAT1). J. Biol. Chem. 279: 28553-28563.
- Ishizuka, N., Minami, K., Okumachi, A., Okuno, M. and Seino, S. 2007. Induction by NeuroD of the components required for regulated exocytosis. Biochem. Biophys. Res. Commun. 354: 271-277.
- Wendeler, M.W., Paccaud, J.P. and Hauri, H.P. 2007. Role of Sec24 isoforms in selective export of membrane proteins from the endoplasmic reticulum. EMBO Rep. 8: 258-264.
- Farhan, H., Reiterer, V., Korkhov, V.M., Schmid, J.A., Freissmuth, M. and Sitte, H.H. 2007. Concentrative export from the endoplasmic reticulum of the γ -aminobutyric acid transporter 1 requires binding to Sec24D. J. Biol. Chem. 282: 7679-7689.

STORAGE

Store at 4° C, **DO NOT FREEZE**. Stable for one year from the date of shipment. Non-hazardous. No MSDS required.

PROTOCOLS

See our web site at www.scbt.com for detailed protocols and support products.

CHROMOSOMAL LOCATION

Genetic locus: SEC24D (human) mapping to 4q26.

SOURCE

Sec24D (34.1) is a mouse monoclonal antibody raised against recombinant Sec24D of human origin.

PRODUCT

Each vial contains 100 μ g IgG₁ kappa light chain in 1.0 ml of PBS with < 0.1% sodium azide and 0.1% gelatin.

APPLICATIONS

Sec24D (34.1) is recommended for detection of Sec24D of human origin by Western Blotting (starting dilution 1:200, dilution range 1:100-1:1000), immunoprecipitation [1-2 μ g per 100-500 μ g of total protein (1 ml of cell lysate)] and solid phase ELISA (starting dilution 1:30, dilution range 1:30-1:3000).

Suitable for use as control antibody for Sec24D siRNA (h): sc-89055, Sec24D shRNA Plasmid (h): sc-89055-SH and Sec24D shRNA (h) Lentiviral Particles: sc-89055-V.

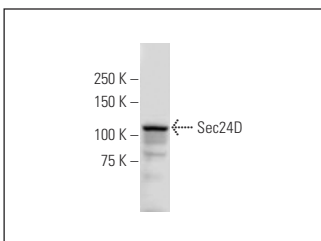
Molecular Weight of Sec24D: 113 kDa.

Positive Controls: HeLa whole cell lysate: sc-2200.

RECOMMENDED SUPPORT REAGENTS

To ensure optimal results, the following support reagents are recommended: 1) Western Blotting: use m-IgG κ BP-HRP: sc-516102 or m-IgG κ BP-HRP (Cruz Marker): sc-516102-CM (dilution range: 1:1000-1:10000), Cruz Marker™ Molecular Weight Standards: sc-2035, UltraCruz® Blocking Reagent: sc-516214 and Western Blotting Luminol Reagent: sc-2048. 2) Immunoprecipitation: use Protein A/G PLUS-Agarose: sc-2003 (0.5 ml agarose/2.0 ml).

DATA



Sec24D (34.1): sc-101268. Western blot analysis of Sec24D expression in HeLa whole cell lysate.

RESEARCH USE

For research use only, not for use in diagnostic procedures.