

Hemoglobin ζ (C-1B3): sc-101272

BACKGROUND

Hemoglobin (Hgb) is coupled to four iron-binding, methene-linked tetrapyrrole rings (heme). The α (16p13.3; 5'- ζ -pseudo ζ -pseudo α 2-pseudo α 1- α 2- α 1- θ 1-3') and β (11p15.5) globin loci determine the basic hemoglobin structure. The globin portion of hemoglobin consists of two α chains and two β chains arranged in pairs forming a tetramer. Each of the four globin chains covalently associates with a heme group. The bonds between α and β chains are weaker than between similar globin chains, thereby forming a cleavage plane that is important for oxygen binding and release. High affinity for oxygen occurs upon relaxation of the α 1- β 2 cleavage plane. When the two α 1- β 2 interfaces are closely bound, hemoglobin has a low affinity for oxygen. Hb A, which contains two α chains plus two β chains, comprises 97% of total circulating hemoglobin. The remaining 3% of total circulating hemoglobin is comprised of Hb A-2, which consists of two α chains plus two δ chains, and fetal hemoglobin (Hb F), which consists of two α chains together with two γ chains.

REFERENCES

- Liebhaber, S.A., et al. 1981. Homology and concerted evolution at the α 1 and α 2 loci of human α -globin. *Nature* 290: 26-29.
- Goodbourn, S.E., et al. 1983. Molecular basis of length polymorphism in the human ζ -globin gene complex. *Proc. Natl. Acad. Sci. USA* 80: 5022-5026.
- Giardina, B., et al. 1995. The multiple functions of hemoglobin. *Crit. Rev. Biochem. Mol. Biol.* 30: 165-196.
- Adachi, K., et al. 2002. Assembly of human hemoglobin (Hb) β - and γ -globin chains expressed in a cell-free system with α -globin chains to form Hb A and Hb F. *J. Biol. Chem.* 277: 13415-13420.
- Sudha, R., et al. 2004. Linkage of interactions in sickle hemoglobin fiber assembly: inhibitory effect emanating from mutations in the AB region of the α chain is annulled by a mutation at its EF corner. *J. Biol. Chem.* 279: 20018-20027.
- Feng, L., et al. 2004. Molecular mechanism of AHSP-mediated stabilization of α -hemoglobin. *Cell* 119: 629-640.
- Baudin-Creuzat, V., et al. 2004. Transfer of human α - to β -hemoglobin via its chaperone protein: evidence for a new state. *J. Biol. Chem.* 279: 36530-36533.

CHROMOSOMAL LOCATION

Genetic locus: HBZ (human) mapping to 16p13.3.

SOURCE

Hemoglobin ζ (C-1B3) is a mouse monoclonal antibody raised against recombinant Hemoglobin ζ of human origin.

PRODUCT

Each vial contains 100 μ g IgG₁ kappa light chain in 1.0 ml of PBS with < 0.1% sodium azide and 0.1% gelatin.

APPLICATIONS

Hemoglobin ζ (C-1B3) is recommended for detection of Hemoglobin ζ of human origin by Western Blotting (starting dilution 1:200, dilution range 1:100-1:1000), immunoprecipitation [1-2 μ g per 100-500 μ g of total protein (1 ml of cell lysate)] and solid phase ELISA (starting dilution 1:30, dilution range 1:30-1:3000).

Suitable for use as control antibody for Hemoglobin ζ siRNA (h): sc-105449, Hemoglobin ζ shRNA Plasmid (h): sc-105449-SH and Hemoglobin ζ shRNA (h) Lentiviral Particles: sc-105449-V.

Molecular Weight (predicted) of Hemoglobin ζ : 16 kDa.

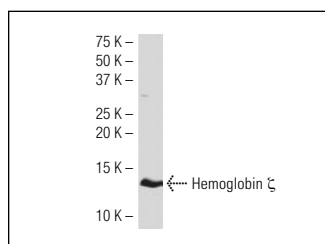
Molecular Weight (observed) of Hemoglobin ζ : 12 kDa.

Positive Controls: K-562 whole cell lysate: sc-2203.

RECOMMENDED SUPPORT REAGENTS

To ensure optimal results, the following support reagents are recommended: 1) Western Blotting: use m-IgG κ BP-HRP: sc-516102 or m-IgG κ BP-HRP (Cruz Marker): sc-516102-CM (dilution range: 1:1000-1:10000), Cruz Marker™ Molecular Weight Standards: sc-2035, TBS Blotto A Blocking Reagent: sc-2333 and Western Blotting Luminol Reagent: sc-2048. 2) Immunoprecipitation: use Protein A/G PLUS-Agarose: sc-2003 (0.5 ml agarose/2.0 ml).

DATA



Hemoglobin ζ (C-1B3): sc-101272. Western blot analysis of Hemoglobin ζ expression in K-562 whole cell lysate.

STORAGE

Store at 4° C, **DO NOT FREEZE**. Stable for one year from the date of shipment. Non-hazardous. No MSDS required.

RESEARCH USE

For research use only, not for use in diagnostic procedures.

PROTOCOLS

See our web site at www.scbt.com for detailed protocols and support products.