

SNRPC (5C9): sc-101548

BACKGROUND

SNRPC (small nuclear ribonucleoprotein polypeptide C) is a 159 amino acid protein that localizes to the nucleus and contains one matrin-type zinc finger. Existing as a monomer, SNRPC associates with U1 SnRNP 70 and may play a role in ribonucleoprotein-related events. The gene encoding SNRPC maps to human chromosome 6, which contains 170 million base pairs and comprises nearly 6% of the human genome. Deletion of a portion of the q arm of chromosome 6 is associated with early onset intestinal cancer, suggesting the presence of a cancer susceptibility locus. Additionally, porphyria cutanea tarda, Parkinson's disease, Stickler syndrome and a susceptibility to bipolar disorder are all associated with genes that map to chromosome 6.

REFERENCES

1. Yamamoto, K., et al. 1988. Isolation and characterization of a complementary DNA expressing human U1 small nuclear ribonucleoprotein C polypeptide. *J. Immunol.* 140: 311-317.
2. Sillescu, P.T., et al. 1988. Human U1 snRNP-specific C protein: complete cDNA and protein sequence and identification of a multigene family in mammals. *Nucleic Acids Res.* 16: 8307-8321.
3. Nelissen, R.L., et al. 1997. Cloning and characterization of two processed pseudogenes and the cDNA for the murine U1 snRNP-specific protein C. *Gene* 184: 273-278.
4. Knoop, L.L. and Baker, S.J. 2000. The splicing factor U1C represses EWS/FLI-mediated transactivation. *J. Biol. Chem.* 275: 24865-24871.
5. Du, H. and Rosbash, M. 2002. The U1 snRNP protein U1C recognizes the 5' splice site in the absence of base pairing. *Nature* 419: 86-90.
6. Online Mendelian Inheritance in Man, OMIM™. 2002. Johns Hopkins University, Baltimore, MD. MIM Number: 603522. World Wide Web URL: <http://www.ncbi.nlm.nih.gov/omim/>
7. Muto, Y., et al. 2004. The structure and biochemical properties of the human spliceosomal protein U1C. *J. Mol. Biol.* 341: 185-198.
8. Hochleitner, E.O., et al. 2005. Protein stoichiometry of a multiprotein complex, the human spliceosomal U1 small nuclear ribonucleoprotein: absolute quantification using isotope-coded tags and mass spectrometry. *J. Biol. Chem.* 280: 2536-2542.

CHROMOSOMAL LOCATION

Genetic locus: SNRPC (human) mapping to 6p21.31; Snrpc (mouse) mapping to 17 A3.3.

SOURCE

SNRPC (5C9) is a rat monoclonal antibody raised against full-length recombinant SNRPC of mouse origin.

PRODUCT

Each vial contains 200 µg IgG_{2a} in 1.0 ml of PBS with < 0.1% sodium azide and 0.1% gelatin.

APPLICATIONS

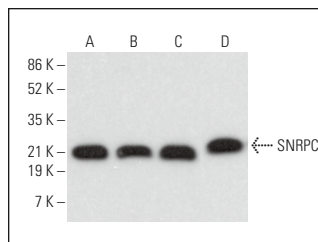
SNRPC (5C9) is recommended for detection of SNRPC of mouse, rat and human origin by Western Blotting (starting dilution 1:200, dilution range 1:100-1:1000), immunoprecipitation [1-2 µg per 100-500 µg of total protein (1 ml of cell lysate)], immunofluorescence (starting dilution 1:50, dilution range 1:50-1:500) and solid phase ELISA (starting dilution 1:30, dilution range 1:30-1:3000).

Suitable for use as control antibody for SNRPC siRNA (h): sc-95371, SNRPC siRNA (m): sc-153661, SNRPC shRNA Plasmid (h): sc-95371-SH, SNRPC shRNA Plasmid (m): sc-153661-SH, SNRPC shRNA (h) Lentiviral Particles: sc-95371-V and SNRPC shRNA (m) Lentiviral Particles: sc-153661-V.

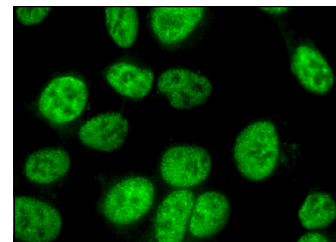
Molecular Weight of SNRPC: 17 kDa.

Positive Controls: A-431 whole cell lysate: sc-2201, SK-MEL-24 whole cell lysate: sc-364259 or F9 cell lysate: sc-2245.

DATA



SNRPC (5C9): sc-101548. Western blot analysis of SNRPC expression in A-431 (A), SK-MEL-24 (B), A-375 (C) and F9 (D) whole cell lysates.



SNRPC (5C9): 101548. Immunofluorescence staining of formalin-fixed Hep G2 cells showing nuclear localization.

STORAGE

Store at 4° C, **DO NOT FREEZE**. Stable for one year from the date of shipment. Non-hazardous. No MSDS required.

RESEARCH USE

For research use only, not for use in diagnostic procedures.

PROTOCOLS

See our web site at www.scbt.com for detailed protocols and support products.