

CCL27 (C-15): sc-10324

BACKGROUND

Cutaneous T cell-attracting chemokine, CCL27 (also designated CTACK, ILC and ALP) is a member of the chemokine superfamily and the subfamily of β or C-C chemokines that binds chemokine receptor CCR10 (GPR-2). Chemokines are a superfamily of small secreted proteins that attract their targets by interacting with G protein-coupled receptors expressed on the migrating cell. CCL27 and CCR10 are involved in skin homeostasis and inflammatory response. CCL27 is found in human keratinocytes and mouse epidermis; CCR10 is expressed by melanocytes, dermal fibroblasts and dermal microvascular endothelial cells and in T cells, as well as in skin-derived Langerhans cells. CCL27 is involved in the preferential migration and recruitment of cutaneous lymphocyte-associated antigen CLA⁺ memory lymphocytes.

REFERENCES

1. Baggiolini, M. 1998. Chemokines and leukocyte traffic. *Nature* 392: 565-568.
2. Morales, J., et al. 1999. CTACK, a skin-associated chemokine that preferentially attracts skin-homing memory T cells. *Proc. Natl. Acad. Sci. USA* 96: 14470-14475.
3. Ishikawa-Mochizuki, I., et al. 1999. Molecular cloning of a novel C-C chemokine, interleukin-11 receptor α -locus chemokine (ILC), which is located on chromosome 9p13 and a potential homologue of a C-C chemokine encoded by mollusum contagiosum virus. *FEBS Lett.* 460: 544-548.
4. Zaballos, A., et al. 1999. CCL27, the human homologue of murine ALP chemokine. Submitted to EMBL/GenBank/DDBJ database.
5. Hromas, R., et al. 1999. Isolation of ALP, a novel divergent murine C-C chemokine with a unique carboxy-terminal extension. *Biochem. Biophys. Res. Commun.* 258: 737-740.
6. Zlotnik, A., et al. 1999. Recent advances in chemokines and chemokine receptors. *Crit. Rev. Immunol.* 19: 1-47.

CHROMOSOMAL LOCATION

Genetic locus: CCL27 (human) mapping to 9p13.

SOURCE

CCL27 (C-15) is an affinity purified goat polyclonal antibody raised against a peptide mapping at the C-terminus of CCL27 of human origin.

PRODUCT

Each vial contains 200 μ g IgG in 1.0 ml of PBS with < 0.1% sodium azide and 0.1% gelatin.

Blocking peptide available for competition studies, sc-10324 P, (100 μ g peptide in 0.5 ml PBS containing < 0.1% sodium azide and 0.2% BSA).

STORAGE

Store at 4° C, ****DO NOT FREEZE****. Stable for one year from the date of shipment. Non-hazardous. No MSDS required.

APPLICATIONS

CCL27 (C-15) is recommended for detection of CCL27 of human origin by Western Blotting (starting dilution 1:200, dilution range 1:100-1:1000), immunoprecipitation [1-2 μ g per 100-500 μ g of total protein (1 ml of cell lysate)], immunofluorescence (starting dilution 1:50, dilution range 1:50-1:500), immunohistochemistry (including paraffin-embedded sections) (starting dilution 1:50, dilution range 1:50-1:500) and solid phase ELISA (starting dilution 1:30, dilution range 1:30-1:3000).

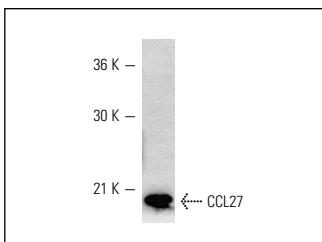
Suitable for use as control antibody for CCL27 siRNA (h): sc-39346, CCL27 shRNA Plasmid (h): sc-39346-SH and CCL27 shRNA (h) Lentiviral Particles: sc-39346-V.

Molecular Weight of CCL27: 10 kDa.

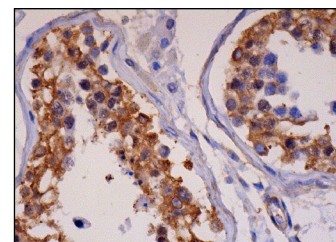
RECOMMENDED SECONDARY REAGENTS

To ensure optimal results, the following support (secondary) reagents are recommended: 1) Western Blotting: use donkey anti-goat IgG-HRP: sc-2020 (dilution range: 1:2000-1:100,000) or Cruz Marker™ compatible donkey anti-goat IgG-HRP: sc-2033 (dilution range: 1:2000-1:5000), Cruz Marker™ Molecular Weight Standards: sc-2035, TBS Blotto A Blocking Reagent: sc-2333 and Western Blotting Luminol Reagent: sc-2048. 2) Immunoprecipitation: use Protein A/G PLUS-Agarose: sc-2003 (0.5 ml agarose/2.0 ml). 3) Immunofluorescence: use donkey anti-goat IgG-FITC: sc-2024 (dilution range: 1:100-1:400) or donkey anti-goat IgG-TR: sc-2783 (dilution range: 1:100-1:400) with UltraCruz™ Mounting Medium: sc-24941. 4) Immunohistochemistry: use ImmunoCruz™: sc-2053 or ABC: sc-2023 goat IgG Staining Systems.

DATA



CCL27 (C-15): sc-10324. Western blot analysis of human recombinant CCL27/CTACK.



CCL27 (C-15): sc-10324. Immunoperoxidase staining of formalin fixed, paraffin-embedded human testis tissue showing cytoplasmic and membrane staining of cells in seminiferous ducts.

RESEARCH USE

For research use only, not for use in diagnostic procedures.

MONOS
Satisfaction
Guaranteed

Try **CCL27 (G-6): sc-390112**, our highly recommended monoclonal alternative to CCL27 (C-15).