

Rbx2 (h): 293 Lysate: sc-110905

BACKGROUND

Rbx1 (also designated ROC1 and Hrt1) and the closely related protein Rbx2 (also designated ROC2) are RING finger containing homologs of the yeast protein APC11, a member of the anaphase-promoting complex (APC). Rbx1 was shown to be a component of the von Hippel-Lindau (VHL) transcription elongation complex, which includes VHL, Elongin B, Elongin C and Cullin-2. Rbx1 interacts with Cullin-1 in the SCF (Skp1-Cdc53-F-box protein) ubiquitin ligase complex. Rbx1 functions as a common subunit of SCF complexes required for ubiquitination of various proteins including yeast G₁ cyclins, I κ B- α and β -catenin. Rbx1 was shown to enhance the ubiquitin ligase activity of the VHL/Cullin-2 complex, and of the SCF/Cullin-1 complex.

REFERENCES

1. Kamura, T., et al. 1999. Rbx1, a component of the VHL tumor suppressor complex and SCF ubiquitin ligase. *Science* 284: 657-661.
2. Tan, P., et al. 1999. Recruitment of a ROC1-CUL1 ubiquitin ligase by Skp1 and HOS to catalyze the ubiquitination of I κ B- α . *Mol. Cell* 3: 527-533.
3. Ohta, T., et al. 1999. ROC1, a homolog of APC11, represents a family of cullin partners with an associated ubiquitin ligase activity. *Mol. Cell* 3: 535-541.
4. Seol, J.H., et al. 1999. Cdc53/cullin and the essential Hrt1 RING-H2 subunit of SCF define a ubiquitin ligase module that activates the E2 enzyme Cdc34. *Genes Dev.* 13: 1614-1626.
5. Iwai, K., et al. 1999. Identification of the von Hippel-lindau tumor-suppressor protein as part of an active E3 ubiquitin ligase complex. *Proc. Natl. Acad. Sci. USA* 96: 12436-12441.

CHROMOSOMAL LOCATION

Genetic locus: RNF7 (human) mapping to 3q23.

PRODUCT

Rbx2 (h): 293 Lysate represents a lysate of human Rbx2 transfected 293 cells and is provided as 100 μ g protein in 200 μ l SDS-PAGE buffer.

STORAGE

Store at 4° C, ****DO NOT FREEZE****. Stable for one year from the date of shipment. Non-hazardous. No MSDS required.

RESEARCH USE

For research use only, not for use in diagnostic procedures.

APPLICATIONS

Rbx2 (h): 293 Lysate is suitable as a Western Blotting positive control for human reactive Rbx2 antibodies. Recommended use: 10-20 μ l per lane.

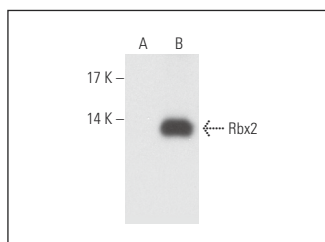
Control 293 Lysate: sc-110760 is available as a Western Blotting negative control lysate derived from non-transfected 293 cells.

Rbx2 (G-8): sc-166554 is recommended as a positive control antibody for Western Blot analysis of enhanced human Rbx2 expression in Rbx2 transfected 293 cells (starting dilution 1:100, dilution range 1:100-1:1,000).

RECOMMENDED SUPPORT REAGENTS

To ensure optimal results, the following support reagents are recommended:
 1) Western Blotting: use m-IgG κ BP-HRP: sc-516102 or m-IgG κ BP-HRP (Cruz Marker): sc-516102-CM (dilution range: 1:1000-1:10000), Cruz Marker™ Molecular Weight Standards: sc-2035, UltraCruz® Blocking Reagent: sc-516214 and Western Blotting Luminal Reagent: sc-2048.

DATA



Rbx2 (G-8): sc-166554. Western blot analysis of Rbx2 expression in non-transfected: sc-110760 (A) and human Rbx2 transfected: sc-110905 (B) 293 whole cell lysates.

PROTOCOLS

See our web site at www.scbt.com for detailed protocols and support products.