

Protein S (h): 293 Lysate: sc-111877

BACKGROUND

Protein S (PROS) is a vitamin K-dependent plasma protein that facilitates clearance of early apoptotic cells as well as inhibiting blood clotting by serving as a cofactor for activated protein C (APC). In the plasma, circulating Protein S becomes inactive upon complexing with C4 β -binding protein (C4BP); 60-70% of Protein S circulates in complex with C4BP. Calcium-dependent association of C4BP-Protein S with apoptotic cells influences the regulation of complement activation. Protein S has APC-independent anticoagulant activity through direct inhibition of prothrombin activation via interactions with Factor X A, Factor V A and phospholipids. Autosomal dominant Protein S deficiency (levels 15-37% of normal) correlates with severe recurrent venous thrombosis.

REFERENCES

- Stenflo, J. and Jonsson, M. 1979. Protein S, a new vitamin K-dependent protein from bovine plasma. *FEBS Lett.* 101: 377-381.
- DiScipio, R.G. and Davie, E.W. 1979. Characterization of Protein S, a γ -carboxyglutamic acid containing protein from bovine and human plasma. *Biochemistry* 18: 899-904.
- Dahlback, B. and Stenflo, J. 1981. High molecular weight complex in human plasma between vitamin K-dependent Protein S and complement component C4 β -binding protein. *Proc. Natl. Acad. Sci. USA* 78: 2512-2516.
- Comp, P.C. and Esmon, C.T. 1984. Recurrent venous thromboembolism in patients with a partial deficiency of Protein S. *N. Engl. J. Med.* 311: 1525-1528.
- Broekmans, A.W., Bertina, R.M., Reinalda-Poot, J., Engesser, L., Muller, H.P., Leeuw, J.A., Michiels, J.J., Brommer, E.J. and Briet, E. 1985. Hereditary Protein S deficiency and venous thromboembolism. A study in three Dutch families. *Thromb. Haemost.* 53: 273-277.
- Andersen, B.D., Bisgaard, M.L., Lind, B., Philips, M., Villoutreix, B. and Thorsen, S. 2001. Characterization and structural impact of five novel PROS1 mutations in eleven Protein S-deficient families. *Thromb. Haemost.* 86: 1392-1399.
- Sere, K.M., Janssen, M.P., Willems, G.M., Tans, G., Rosing, J. and Hackeng, T.M. 2001. Purified Protein S contains multimeric forms with increased APC-independent anticoagulant activity. *Biochemistry* 40: 8852-8860.
- Webb, J.H., Blom, A.M. and Dahlback, B. 2002. Vitamin K-dependent Protein S localizing complement regulator C4 β -binding protein to the surface of apoptotic cells. *J. Immunol.* 169: 2580-2586.
- Rezende, S.M., Lane, D.A., Zoller, B., Mille-Baker, B., Laffan, M., Dalhback, B. and Simmonds, R.E. 2002. Genetic and phenotypic variability between families with hereditary Protein S deficiency. *Thromb. Haemost.* 87: 258-265.

CHROMOSOMAL LOCATION

Genetic locus: PROS1 (human) mapping to 3q11.1.

PRODUCT

Protein S (h): 293 Lysate represents a lysate of human Protein S transfected 293 cells and is provided as 100 μ g protein in 200 μ l SDS-PAGE buffer.

APPLICATIONS

Protein S (h): 293 Lysate is suitable as a Western Blotting positive control for human reactive Protein S antibodies. Recommended use: 10-20 μ l per lane.

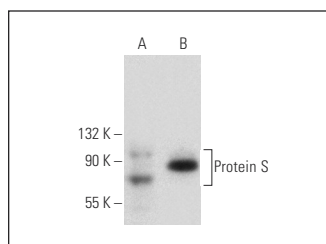
Control 293 Lysate: sc-110760 is available as a Western Blotting negative control lysate derived from non-transfected 293 cells.

Protein S (C-5): sc-271400 is recommended as a positive control antibody for Western Blot analysis of enhanced human Protein S expression in Protein S transfected 293 cells (starting dilution 1:100, dilution range 1:100-1:1,000).

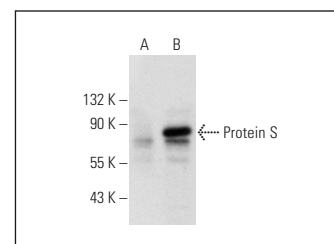
RECOMMENDED SUPPORT REAGENTS

To ensure optimal results, the following support reagents are recommended:
 1) Western Blotting: use m-IgG κ BP-HRP: sc-516102 or m-IgG κ BP-HRP (Cruz Marker): sc-516102-CM (dilution range: 1:1000-1:10000), Cruz Marker™ Molecular Weight Standards: sc-2035, UltraCruz® Blocking Reagent: sc-516214 and Western Blotting Luminol Reagent: sc-2048.

DATA



Protein S (C-5): sc-271400. Western blot analysis of Protein S expression in non-transfected: sc-110760 (A) and human Protein S transfected: sc-111877 (B) 293 whole cell lysates.



Protein S (PS7): sc-52720. Western blot analysis of Protein S expression in non-transfected: sc-110760 (A) and human Protein S transfected: sc-111877 (B) 293 whole cell lysates.

STORAGE

Store at -20° C. Repeated freezing and thawing should be minimized. Sample vial should be boiled once prior to use. Non-hazardous. No MSDS required.

RESEARCH USE

For research use only, not for use in diagnostic procedures.

PROTOCOLS

See our web site at www.scbt.com for detailed protocols and support products.