

E-Selectin (h): 293T Lysate: sc-112627

BACKGROUND

Selectins, also designated CD62 antigens, comprise a family of carbohydrate-binding proteins involved in mediating cellular interactions with leukocytes. L-Selectin (also designated LECAM-1 or CD62L) is expressed on the majority of B and naive T cells and on most monocytes, neutrophils and eosinophils. L-Selectin interacts with specific carbohydrates expressed by activated endothelial cells. P-Selectin (also designated GMP-140 or CD62P), expressed on activated platelets and endothelial cells, and E-Selectin (also designated ELMA-1 or CD62E), expressed on endothelial cells, exhibit overlapping ligand specificities. E-Selectin is expressed by cytokine-stimulated endothelial cells and is thought to be responsible for the accumulation of blood leukocytes at sites of inflammation by mediating the adhesion of cells to the vascular lining.

REFERENCES

1. Varki, A. 1994. Selectin ligands. *Proc. Natl. Acad. Sci. USA* 91: 7390-7397.
2. Tedder, T.F., Steeber, D.A., Chen, A. and Engel, P. 1995. The selectins: vascular adhesion molecules. *FASEB J.* 10: 866-873.
3. Lasky, L.A. 1995. Selectin-carbohydrate interactions and the initiation of the inflammatory response. *Annu. Rev. Biochem.* 64: 113-139.
4. Pavalko, R.M., Walker, D.M., Graham, L., Goheen, M., Doerschuk, C.M. and Kansas, G.S. 1995. The cytoplasmic domain of L-Selectin interacts with cytoskeletal proteins via α -actinin: receptor positioning in microvilli does not require interaction with α -actinin. *J. Cell Biol.* 129: 1155-1164.
5. McEver, R.P., Moore, K.L. and Cummings, R.D. 1995. Leukocyte trafficking mediated by selectin-carbohydrate interactions. *J. Biol. Chem.* 270: 11025-11028.
6. Rosen, S.D. and Bertozzi, C.R. 1996. Two selectins converge on sulphate. Leukocyte adhesion. *Curr. Biol.* 6: 261-264.
7. Diacovo, T.G., Puri, K.D., Warnock, R.A., Springer, T.A. and von Andrian, U.H. 1996. Platelet-mediated lymphocyte delivery to high endothelial venules. *Science* 273: 252-255.
8. Frenette, P.S., Mayadas, T.N., Rayburn, H., Hynes, R.O. and Wagner, D.D. 1996. Susceptibility to infection and altered hematopoiesis in mice deficient in both P- and E-Selectins. *Cell* 84: 563-574.
9. Engelhardt, B., Vestweber, D., Hallmann, R. and Schulzet, M. 1997. E- and P-selectin are not involved in the recruitment of inflammatory cells across the blood-brain barrier in experimental autoimmune encephalomyelitis. *Blood* 90: 4459-4472.

CHROMOSOMAL LOCATION

Genetic locus: SELE (human) mapping to 1q24.2.

PRODUCT

E-Selectin (h): 293T Lysate represents a lysate of human E-Selectin transfected 293T cells and is provided as 100 μ g protein in 200 μ l SDS-PAGE buffer.

RESEARCH USE

For research use only, not for use in diagnostic procedures.

APPLICATIONS

E-Selectin (h): 293T Lysate is suitable as a Western Blotting positive control for human reactive E-Selectin antibodies. Recommended use: 10-20 μ l per lane.

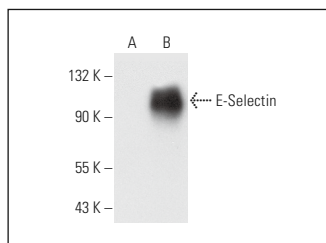
Control 293T Lysate: sc-117752 is available as a Western Blotting negative control lysate derived from non-transfected 293T cells.

E-Selectin (A-10): sc-137203 is recommended as a positive control antibody for Western Blot analysis of enhanced human E-Selectin expression in E-Selectin transfected 293T cells (starting dilution 1:100, dilution range 1:100-1:1,000).

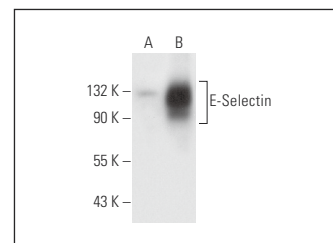
RECOMMENDED SUPPORT REAGENTS

To ensure optimal results, the following support reagents are recommended:
1) Western Blotting: use m-IgG κ BP-HRP: sc-516102 or m-IgG κ BP-HRP (Cruz Marker): sc-516102-CM (dilution range: 1:1000-1:10000), Cruz Marker™ Molecular Weight Standards: sc-2035, UltraCruz® Blocking Reagent: sc-516214 and Western Blotting Luminol Reagent: sc-2048.

DATA



E-Selectin (A-10): sc-137203. Western blot analysis of E-Selectin expression in non-transfected: sc-117752 (A) and human E-Selectin transfected: sc-112627 (B) 293T whole cell lysates.



E-Selectin (D-7): sc-137054. Western blot analysis of E-Selectin expression in non-transfected: sc-117752 (A) and human E-Selectin transfected: sc-112627 (B) 293T whole cell lysates.

STORAGE

Store at 4° C, **DO NOT FREEZE**. Stable for one year from the date of shipment. Non-hazardous. No MSDS required.

PROTOCOLS

See our web site at www.scbt.com for detailed protocols and support products.