

PP2A-C β (h): 293T Lysate: sc-113470

BACKGROUND

In eukaryotes, the phosphorylation and dephosphorylation of proteins on serine and threonine residues is an essential means of regulating a broad range of cellular functions, including division, homeostasis and apoptosis. A group of proteins that are intimately involved in this process are the protein phosphatases. In general, the protein phosphatase (PP) holoenzyme is a trimeric complex composed of a regulatory subunit, a variable subunit and a catalytic subunit. Four major families of protein phosphatase catalytic subunits have been identified, designated PP1, PP2A, PP2B (calcineurin) and PP2C. The PP2A family comprises subfamily members PP2A α and PP2A β . An additional protein phosphatase catalytic subunit, PPX (also known as PP4), is a putative member of a novel PP family. The PP2A catalytic subunit associates with a variety of regulatory subunits. Regulatory subunits include PP2A-A α and -A β , PP2A-B α and -B β , PP2A-C α and -C β , and PP2A-B56- α and -B56- β .

REFERENCES

1. Ueki, K., et al. 1992. Structure and expression of two isoforms of the murine calmodulin-dependent protein phosphatase regulatory subunit (calcineurin B). *Biochem. Biophys. Res. Commun.* 187: 537-543.
2. Cohen, P.T. 1993. Important roles for novel protein phosphatases dephosphorylating serine and threonine residues. *Biochem. Soc. Trans.* 21: 884-888.
3. Hendrix, P., et al. 1993. Structure and expression of a 72-kDa regulatory subunit of protein phosphatase 2A. Evidence for different size forms produced by alternative splicing. *J. Biol. Chem.* 268: 15267-15276.
4. Mumby, M.C., et al. 1993. Protein serine/threonine phosphatases: structure, regulation, and functions in cell growth. *Phys. Rev.* 73: 673-699.
5. Okubo, S., et al. 1994. A regulatory subunit of smooth muscle Myosin bound phosphatase. *Biochem. Biophys. Res. Commun.* 200: 429-434.
6. Wera, S., et al. 1995. Serine/threonine protein phosphatases. *Biochem. J.* 311: 17-29.
7. Van Eynde, A., et al. 1995. Molecular cloning of NIPP1, a nuclear inhibitor of protein phosphatase-1, reveals homology with polypeptides involved in RNA processing. *J. Biol. Chem.* 270: 28068-28074.

CHROMOSOMAL LOCATION

Genetic locus: PPP2CB (human) mapping to 8p12.

PRODUCT

PP2A-C β (h): 293T Lysate represents a lysate of human PP2A-C β transfected 293T cells and is provided as 100 μ g protein in 200 μ l SDS-PAGE buffer.

STORAGE

Store at -20° C. Repeated freezing and thawing should be minimized. Sample vial should be boiled once prior to use. Non-hazardous. No MSDS required.

PROTOCOLS

See our web site at www.scbt.com for detailed protocols and support products.

APPLICATIONS

PP2A-C β (h): 293T Lysate is suitable as a Western Blotting positive control for human reactive PP2A-C β antibodies. Recommended use: 10-20 μ l per lane.

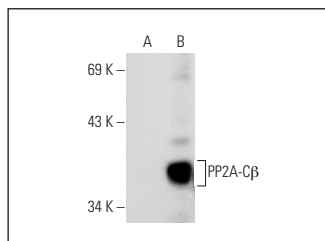
Control 293T Lysate: sc-117752 is available as a Western Blotting negative control lysate derived from non-transfected 293T cells.

PP2A-C α / β (G-4): sc-166034 is recommended as a positive control antibody for Western Blot analysis of enhanced human PP2A-C β expression in PP2A-C β transfected 293T cells (starting dilution 1:100, dilution range 1:100-1:1,000).

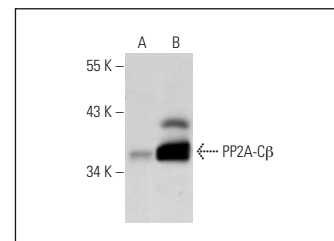
RECOMMENDED SUPPORT REAGENTS

To ensure optimal results, the following support reagents are recommended: 1) Western Blotting: use m-IgG κ BP-HRP: sc-516102 or m-IgG κ BP-HRP (Cruz Marker): sc-516102-CM (dilution range: 1:1000-1:10000), Cruz Marker™ Molecular Weight Standards: sc-2035, UltraCruz® Blocking Reagent: sc-516214 and Western Blotting Luminol Reagent: sc-2048.

DATA



PP2A-C α / β (G-4): sc-166034. Western blot analysis of PP2A-C β expression in non-transfected: sc-117752 (A) and human PP2A-C β transfected: sc-113470 (B) 293T whole cell lysates.



PP2A-C α / β (O.T.118): sc-56950. Western blot analysis of PP2A-C β expression in non-transfected: sc-117752 (A) and human PP2A-C β transfected: sc-113470 (B) 293T whole cell lysates.

RESEARCH USE

For research use only, not for use in diagnostic procedures.