

Ig J Chain (h): 293T Lysate: sc-115510

BACKGROUND

The regions of relatively constant sequence beyond the variable regions of Immunoglobulin are termed constant regions (C regions) and are present in both the heavy and light chains. With few exceptions, the sites of attachment for carbohydrates to immunoglobulin are located in the constant region. The constant regions also serve to hold the variable regions on both heavy and light chain together by virtue of the disulfide bond between them. The immunoglobulin J chain (Ig J Chain) is a linker protein for two monomer units of either immunoglobulin α (IgA) or μ (IgM) polypeptides. For IgA the J chained-jointed dimer induces larger polymers whereas for the IgM pentamer it functions as a nucleating unit. The Ig J Chain is also important in binding these immunoglobulins to secretory components.

REFERENCES

1. Yagi, M., et al. 1982. J chain is encoded by a single gene unlinked to other immunoglobulin structural genes. *J. Exp. Med.* 155: 647-654.
2. Cann, G.M., et al. 1982. Primary structure of the immunoglobulin J chain from the mouse. *Proc. Natl. Acad. Sci. USA* 79: 6656-6660.
3. Zikan, J., et al. 1985. Secondary structure of the immunoglobulin J chain. *Proc. Natl. Acad. Sci. USA* 82: 5905-5909.
4. Matsuchi, L., et al. 1986. Immunoglobulin J chain gene from the mouse. *Proc. Natl. Acad. Sci. USA* 83: 456-460.
5. Bastian, A., et al. 1992. Intra- and interchain disulfide bridges of the human J chain in secretory immunoglobulin A. *Biol. Chem. Hoppe. Seyler.* 373: 1255-1263.
6. Frutiger, S., et al. 1992. Disulfide bond assignment in human J chain and its covalent pairing with immunoglobulin M. *Biochemistry* 31: 12643-12647.
7. Chintalacharuvu, K.R., et al. 1993. Unstable inter-H chain disulfide bonding and non-covalently associated J chain in rat dimeric IgA. *Mol. Immunol.* 30: 19-26.
8. Mestecky, J., et al. 1997. Immunoglobulin J chain. An early differentiation marker of human B cells. *Ann. N.Y. Acad. Sci.* 815: 111-113.
9. Feng, Q., et al. 2005. The diagnostic significance of Ig heavy chain rearrangement detected in B cell lymphoma patients' serum or plasma blood samples. *Zhonghua Nei Ke Za Zhi* 44: 415-417.

CHROMOSOMAL LOCATION

Genetic locus: IGJ (human) mapping to 4q13.3.

PRODUCT

Ig J Chain (h): 293T Lysate represents a lysate of human Ig J Chain transfected 293T cells and is provided as 100 μ g protein in 200 μ l SDS-PAGE buffer.

STORAGE

Store at -20° C. Repeated freezing and thawing should be minimized. Sample vial should be boiled once prior to use. Non-hazardous. No MSDS required.

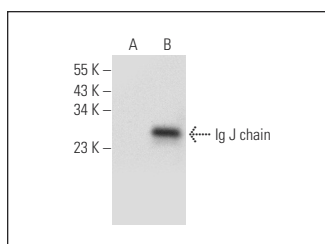
APPLICATIONS

Ig J Chain (h): 293T Lysate is suitable as a Western Blotting positive control for human reactive Ig J Chain antibodies. Recommended use: 10-20 μ l per lane.

Control 293T Lysate: sc-117752 is available as a Western Blotting negative control lysate derived from non-transfected 293T cells.

Ig J chain (F-12): sc-133177 is recommended as a positive control antibody for Western Blot analysis of enhanced human Ig J Chain expression in Ig J Chain transfected 293T cells (starting dilution 1:100, dilution range 1:100-1:1,000).

DATA



Ig J chain (F-12): sc-133177. Western blot analysis of Ig J chain expression in non-transfected: sc-117752 (A) and human Ig J chain transfected: sc-115510 (B) 293T whole cell lysates.

RESEARCH USE

For research use only, not for use in diagnostic procedures.

PROTOCOLS

See our web site at www.scbt.com for detailed protocols and support products.