

ABCF2 (m): 293T Lysate: sc-118161

BACKGROUND

ATP-binding cassette (ABC) transporters are an evolutionarily conserved family of widely-expressed proteins that use ATP hydrolysis to catalyze the transport of various molecules across extracellular and intracellular membranes. As the largest family of transmembrane proteins, ABC genes comprise several sub-families. Eukaryotic ABC transporters are largely responsible for trafficking hydrophobic compounds either within the cell, as part of a metabolic process, or outside the cell, for transport to other organs or for secretion from the body. ABCF2 in particular plays a putative role in tumor suppression at metastatic sites and in the endocrine pathway for breast cancer and may be a prognostic marker for clear cell ovarian adenocarcinoma.

REFERENCES

1. Park, H.J., Yoon, S.H., Han, L.S., Zheng, L.T., Jung, K.H., Uhm, Y.K., Lee, J.H., Jeong, J.S., Joo, W.S., Yim, S.V., Chung, J.H. and Hong, S.P. 2005. Amygdalin inhibits genes related to cell cycle in SNU-C4 human colon cancer cells. *World J. Gastroenterol.* 11: 5156-5161.
2. Tsuda, H., Ito, Y.M., Ohashi, Y., Wong, K.K., Hashiguchi, Y., Welch, W.R., Berkowitz, R.S., Birrer, M.J. and Mok, S.C. 2005. Identification of overexpression and amplification of ABCF2 in clear cell ovarian adenocarcinomas by cDNA microarray analyses. *Clin. Cancer Res.* 11: 6880-6888.
3. Ogawa, Y., Tsuda, H., Hai, E., Tsuji, N., Yamagata, S., Tokunaga, S., Nakazawa, K., Tamamori, Y., Ogawa, M., Shimizu, S., Inoue, T. and Nishiguchi, Y. 2006. Clinical role of ABCF2 expression in breast cancer. *Anticancer Res.* 26: 1809-1814.
4. Nishimura, S., Tsuda, H., Ito, K., Jobo, T., Yaegashi, N., Inoue, T., Sudo, T., Berkowitz, R.S. and Mok, S.C. 2006. Differential expression of ABCF2 protein among different histologic types of epithelial ovarian cancer and in clear cell adenocarcinomas of different organs. *Hum. Pathol.* 38: 134-139.

CHROMOSOMAL LOCATION

Genetic locus: *Abcf2* (mouse) mapping to 5 A3.

PRODUCT

ABCF2 (m): 293T Lysate represents a lysate of mouse ABCF2 transfected 293T cells and is provided as 100 µg protein in 200 µl SDS-PAGE buffer.

STORAGE

Store at -20° C. Repeated freezing and thawing should be minimized. Sample vial should be boiled once prior to use. Non-hazardous. No MSDS required.

APPLICATIONS

ABCF2 (m): 293T Lysate is suitable as a Western Blotting positive control for mouse reactive ABCF2 antibodies. Recommended use: 10-20 µl per lane.

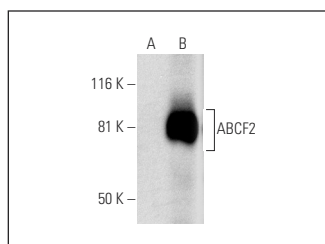
Control 293T Lysate: sc-117752 is available as a Western Blotting negative control lysate derived from non-transfected 293T cells.

ABCF2 (E-2): sc-390496 is recommended as a positive control antibody for Western Blot analysis of enhanced mouse ABCF2 expression in ABCF2 transfected 293T cells (starting dilution 1:100, dilution range 1:100-1:1,000).

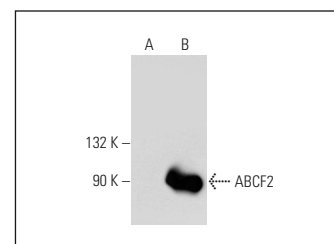
RECOMMENDED SUPPORT REAGENTS

To ensure optimal results, the following support reagents are recommended:
1) Western Blotting: use m-IgGκ BP-HRP: sc-516102 or m-IgGκ BP-HRP (Cruz Marker): sc-516102-CM (dilution range: 1:1000-1:10000), Cruz Marker™ Molecular Weight Standards: sc-2035, UltraCruz® Blocking Reagent: sc-516214 and Western Blotting Luminol Reagent: sc-2048.

DATA



ABCF2 (E-2): sc-390496. Western blot analysis of ABCF2 expression in non-transfected: sc-117752 (A) and mouse ABCF2 transfected: sc-118161 (B) 293T whole cell lysates.



ABCF2 (2001C1): sc-81176. Western blot analysis of ABCF2 expression in non-transfected: sc-117752 (A) and mouse ABCF2 transfected: sc-118161 (B) 293T whole cell lysates.

RESEARCH USE

For research use only, not for use in diagnostic procedures.

PROTOCOLS

See our web site at www.scbt.com for detailed protocols and support products.