

# ISG15 (m): 293T Lysate: sc-121117

## BACKGROUND

Interferon-induced 15 kDa protein (ISG15) acts as ubiquitin by conjugating to intracellular target proteins such as JAK1 or MAPK3/ERK 1 through an enzyme pathway distinct from that of ubiquitin. ISG15 shows specific chemotactic activity towards neutrophils and activates them to induce the release of eosinophil chemotactic factors. ISG15 is also involved in paracrine, autocrine and endocrine mechanisms by inducing IFN- $\gamma$  secretion by monocytes and macrophages, as in cell-to-cell signaling. ISG15 is a cytoplasmic protein expressed mainly in muscle, epithelial, neuronal and lymphoid cells.

## REFERENCES

1. Knight, E., Jr., et al. 1991. IFN-induced 15 kDa protein is released from human lymphocytes and monocytes. *J. Immunol.* 146: 2280-2284.
2. Loeb, K.R., et al. 1992. The interferon-inducible 15 kDa ubiquitin homolog conjugates to intracellular proteins. *J. Biol. Chem.* 267: 7806-7813.
3. Kim, K.I., et al. 2003. ISG15, not just another ubiquitin-like protein. *Biochem. Biophys. Res. Commun.* 307: 431-434.
4. Liu, M., et al. 2003. Proteasomes modulate conjugation to the ubiquitin-like protein, ISG15. *J. Biol. Chem.* 278: 1594-1602.
5. Austin, K.J., et al. 2004. Localization of ISG15 and conjugated proteins in bovine endometrium using immunohistochemistry and electron microscopy. *Endocrinology* 145: 967-975.
6. Ritchie, K.J., et al. 2004. Role of ISG15 protease UBP43 (USP18) in innate immunity to viral infection. *Nat. Med.* 10: 1374-1378.
7. Catic, A., et al. 2007. Screen for ISG15-crossreactive deubiquitinases. *PLoS ONE* 2: e679.
8. Rempel, L.A., et al. 2007. Ubp43 gene expression is required for normal ISG15 expression and fetal development. *Reprod. Biol. Endocrinol.* 5: 13.
9. Okumura, F., et al. 2007. ISG15 modification of the eIF4E cognate 4EHP enhances cap structure-binding activity of 4EHP. *Genes Dev.* 21: 255-260.

## CHROMOSOMAL LOCATION

Genetic locus: *Isg15* (mouse) mapping to 4 E2.

## PRODUCT

ISG15 (m): 293T Lysate represents a lysate of mouse ISG15 transfected 293T cells and is provided as 100  $\mu$ g protein in 200  $\mu$ l SDS-PAGE buffer.

## APPLICATIONS

ISG15 (m): 293T Lysate is suitable as a Western Blotting positive control for mouse reactive ISG15 antibodies. Recommended use: 10-20  $\mu$ l per lane.

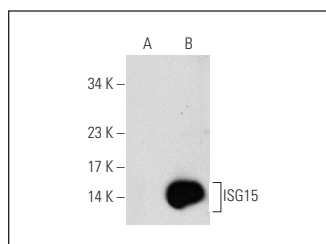
Control 293T Lysate: sc-117752 is available as a Western Blotting negative control lysate derived from non-transfected 293T cells.

ISG15 (E-9): sc-166794 is recommended as a positive control antibody for Western Blot analysis of enhanced mouse ISG15 expression in ISG15 transfected 293T cells (starting dilution 1:100, dilution range 1:100-1:1,000).

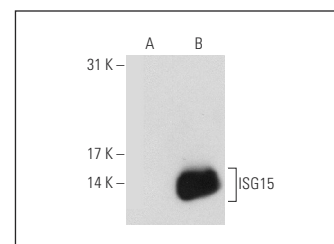
## RECOMMENDED SUPPORT REAGENTS

To ensure optimal results, the following support reagents are recommended:  
1) Western Blotting: use m-IgG $\kappa$  BP-HRP: sc-516102 or m-IgG $\kappa$  BP-HRP (Cruz Marker): sc-516102-CM (dilution range: 1:1000-1:10000), Cruz Marker<sup>™</sup> Molecular Weight Standards: sc-2035, UltraCruz<sup>®</sup> Blocking Reagent: sc-516214 and Western Blotting Luminol Reagent: sc-2048.

## DATA



ISG15 (E-9): sc-166794. Western blot analysis of ISG15 expression in non-transfected: sc-117752 (A) and mouse ISG15 transfected: sc-121117 (B) 293T whole cell lysates.



ISG15 (F-9): sc-166755. Western blot analysis of ISG15 expression in non-transfected: sc-117752 (A) and mouse ISG15 transfected: sc-121117 (B) 293T whole cell lysates.

## STORAGE

Store at -20 $^{\circ}$  C. Repeated freezing and thawing should be minimized. Sample vial should be boiled once prior to use. Non-hazardous. No MSDS required.

## RESEARCH USE

For research use only, not for use in diagnostic procedures.

## PROTOCOLS

See our web site at [www.scbt.com](http://www.scbt.com) for detailed protocols and support products.